

NOTICE!!

These documents have been scanned!

Do not place un-scanned documents beneath this notice!

Do not remove this notice from this file!

GPO Jacket No. 560-102
Print Order 61540
Rise Business Services, LLC
Job=AZ15 5/10/2019



Box Number= AZ15036



Claim Begin-End: AMC425251-AMC425279

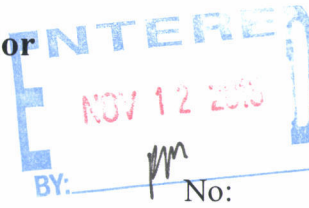
1 Initial Receipt



AZ15036-10

AMC425096-AMC425592

United States Department of the Interior
Bureau of Land Management
 LANDS/RECREATION & PLANNING
 ONE N CENTRAL AVE
 PHOENIX, AZ 85004 -2203
 Phone: 602-417-9200



Receipt

2899576

Transaction #: 2986192	
Date of Transaction: 10/29/2013	
CUSTOMER:	
GOLD BASIN MINING EXP LLC 10923 VALLEROSA ST LAS VEGAS,NV 89141-3927 US	

LINE #	QTY	DESCRIPTION	REMARKS	UNIT PRICE	TOTAL
1	29.00	LOCATABLE MINERALS / MINING CLAIMS-NEW,UNADJUD, ONE OR MORE AUTH NOS / NEW MINING CLAIM LOCATION FEE \$34 CASES: AMC425251/\$34.00, AMC425252/\$34.00, AMC425253/\$34.00, AMC425254/\$34.00, AMC425255/\$34.00, AMC425256/\$34.00, AMC425257/\$34.00, AMC425258/\$34.00, AMC425259/\$34.00, AMC425260/\$34.00, AMC425261/\$34.00, AMC425262/\$34.00, AMC425263/\$34.00, AMC425264/\$34.00, AMC425265/\$34.00, AMC425266/\$34.00, AMC425267/\$34.00, AMC425268/\$34.00, AMC425269/\$34.00, AMC425270/\$34.00, AMC425271/\$34.00, AMC425272/\$34.00, AMC425273/\$34.00, AMC425274/\$34.00, AMC425275/\$34.00, AMC425276/\$34.00, AMC425277/\$34.00, AMC425278/\$34.00, AMC425279/\$34.00		- n/a -	986.00
2	29.00	LOCATABLE MINERALS / MINING CLAIMS-NEW,UNADJUD, ONE OR MORE AUTH NOS / NEW MINING CLAIM PROCESSING FEE \$20 CASES: AMC425251/\$20.00, AMC425252/\$20.00, AMC425253/\$20.00, AMC425254/\$20.00, AMC425255/\$20.00, AMC425256/\$20.00, AMC425257/\$20.00, AMC425258/\$20.00, AMC425259/\$20.00, AMC425260/\$20.00, AMC425261/\$20.00, AMC425262/\$20.00, AMC425263/\$20.00, AMC425264/\$20.00, AMC425265/\$20.00, AMC425266/\$20.00, AMC425267/\$20.00, AMC425268/\$20.00, AMC425269/\$20.00, AMC425270/\$20.00,		- n/a -	580.00

		AMC425271/\$20.00, AMC425272/\$20.00, AMC425273/\$20.00, AMC425274/\$20.00, AMC425275/\$20.00, AMC425276/\$20.00, AMC425277/\$20.00, AMC425278/\$20.00, AMC425279/\$20.00			
3	29.00	LOCATABLE MINERALS / MINING CLAIMS- NEW, UNADJUD, ONE OR MORE AUTH NOS / NEW MINING CLAIM MAINT FEE \$140 CASES: AMC425251/\$140.00, AMC425252/\$140.00, AMC425253/\$140.00, AMC425254/\$140.00, AMC425255/\$140.00, AMC425256/\$140.00, AMC425257/\$140.00, AMC425258/\$140.00, AMC425259/\$140.00, AMC425260/\$140.00, AMC425261/\$140.00, AMC425262/\$140.00, AMC425263/\$140.00, AMC425264/\$140.00, AMC425265/\$140.00, AMC425266/\$140.00, AMC425267/\$140.00, AMC425268/\$140.00, AMC425269/\$140.00, AMC425270/\$140.00, AMC425271/\$140.00, AMC425272/\$140.00, AMC425273/\$140.00, AMC425274/\$140.00, AMC425275/\$140.00, AMC425276/\$140.00, AMC425277/\$140.00, AMC425278/\$140.00, AMC425279/\$140.00		- n/a -	4060.00
TOTAL:				\$5,626.00	

PAYMENT INFORMATION				
1	AMOUNT:	5626.00	POSTMARKED:	10/25/2013
	TYPE:	CHECK	RECEIVED:	10/28/2013
	CHECK NO:	1085		
	NAME:	AJA MINING LLC 10923 VALLEROSA ST LAS VEGAS NV 89141-3927 US		

REMARKS

This receipt was generated by the automated BLM Collections and Billing System and is a paper representation of a portion of the official electronic record contained therein.

NOTICE!!

These documents have been scanned!

Do not place un-scanned documents beneath this notice!

Do not remove this notice from this file!

GPO Jacket No. 560-102
Print Order 61540
Rise Business Services, LLC
Job=AZ15 5/10/2019



Box Number= AZ15036



Claim Begin-End: AMC425251-AMC425279

2 Correspondence



AZ15036-10

AMC425096-AMC425592

**NO
DOCUMENTS
FOUND**

NO DOCUMENTS FOUND
NO DOCUMENTS FOUND

NOTICE!!

These documents have been scanned!

Do not place un-scanned documents beneath this notice!

Do not remove this notice from this file!

GPO Jacket No. 560-102
Print Order 61540
Rise Business Services, LLC
Job=AZ15 5/10/2019



Box Number= AZ15036



Claim Begin-End: AMC425251-AMC425279

3 Transfers



AZ15036-10

AMC425096-AMC425592

**NO
DOCUMENTS
FOUND**

NO DOCUMENTS FOUND
NO DOCUMENTS FOUND

NOTICE!!

These documents have been scanned!

Do not place un-scanned documents beneath this notice!

Do not remove this notice from this file!

GPO Jacket No. 560-102
Print Order 61540
Rise Business Services, LLC
Job=AZ15 5/10/2019



Box Number= AZ15036



Claim Begin-End: AMC425251-AMC425279

4 Miscellaneous



AZ15036-10

AMC425096-AMC425592

**NO
DOCUMENTS
FOUND**

NO DOCUMENTS FOUND
NO DOCUMENTS FOUND

NOTICE!!

These documents have been scanned!

Do not place un-scanned documents beneath this notice!

Do not remove this notice from this file!

GPO Jacket No. 560-102
Print Order 61540
Rise Business Services, LLC
Job=AZ15 5/10/2019



Box Number= AZ15036



Claim Begin-End: AMC425251-AMC425279

5 Annual Filings



AZ15036-10

AMC425096-AMC425592

**DEPARTMENT OF THE INTERIOR
BUREAU OF LAND MANAGEMENT
MINING CLAIMS**

Run Date/Time: 9/11/2018

**MC Maintenance Fees Paid Through the BLM Pay Portal
(by Date Paid)**

Page 16 Of 723

CBS Receipt: 4240218

Printed For Lead File # **AMC425251**

Agency Tracking ID: 1534791828

Assessment Year: 2019

Paid On: 8/20/2018

Number of BLM Serial Nr: 44

Total Amount Paid: \$6,820.00

Claim Name	BLM Serial No	Lead File No	Amount Paid
BB-1	AMC420119	AMC420119	\$155.00
BB-2	AMC420120	AMC420119	\$155.00
BB-3	AMC420121	AMC420119	\$155.00
BB-4	AMC420122	AMC420119	\$155.00
BB-5	AMC420123	AMC420119	\$155.00
GBM-1	AMC420131	AMC420131	\$155.00
GBM-2	AMC420132	AMC420131	\$155.00
GBM-3	AMC420133	AMC420131	\$155.00
GBM-4	AMC420134	AMC420131	\$155.00
GBM-10	AMC420140	AMC420131	\$155.00
GBM-11	AMC420141	AMC420131	\$155.00
GBM-12	AMC420142	AMC420131	\$155.00
GBM-13	AMC420143	AMC420131	\$155.00
GBM-19	AMC420149	AMC420131	\$155.00
GBM-20	AMC420150	AMC420131	\$155.00
BB-13	AMC425251	AMC425251	\$155.00
BB-14	AMC425252	AMC425251	\$155.00
BB-15	AMC425253	AMC425251	\$155.00
BB-16	AMC425254	AMC425251	\$155.00
BB-17	AMC425255	AMC425251	\$155.00
BB-18	AMC425256	AMC425251	\$155.00
BB-19	AMC425257	AMC425251	\$155.00
BB-20	AMC425258	AMC425251	\$155.00
BB-21	AMC425259	AMC425251	\$155.00

NO WARRANTY IS MADE BY BLM FOR USE OF THE DATA FOR PURPOSES NOT INTENDED BY BLM

DEPARTMENT OF THE INTERIOR
BUREAU OF LAND MANAGEMENT
MINING CLAIMS

Run Date/Time: 9/11/2018

MC Maintenance Fees Paid Through the BLM Pay Portal
(by Date Paid)

Page 17 Of 723

BB-22	AMC425260	AMC425251	\$155.00
BB-23	AMC425261	AMC425251	\$155.00
BB-24	AMC425262	AMC425251	\$155.00
BB-25	AMC425263	AMC425251	\$155.00
BB-26	AMC425264	AMC425251	\$155.00
BB-27	AMC425265	AMC425251	\$155.00
BB-28	AMC425266	AMC425251	\$155.00
BB-29	AMC425267	AMC425251	\$155.00
BB-30	AMC425268	AMC425251	\$155.00
BB-31	AMC425269	AMC425251	\$155.00
BB-32	AMC425270	AMC425251	\$155.00
BB-33	AMC425271	AMC425251	\$155.00
BB-40	AMC425272	AMC425251	\$155.00
BB-41	AMC425273	AMC425251	\$155.00
BB-42	AMC425274	AMC425251	\$155.00
BB-43	AMC425275	AMC425251	\$155.00
BB-44	AMC425276	AMC425251	\$155.00
BB-45	AMC425277	AMC425251	\$155.00
BB-46	AMC425278	AMC425251	\$155.00
BB-47	AMC425279	AMC425251	\$155.00

**United States Department of the Interior
Bureau of Land Management
BUSINESS & SUPPORT SVCS DIV
ONE N CENTRAL AVE SUITE 800
PHOENIX, AZ 85004 -4427
Phone: 602-417-9200**

Receipt

No: 4240218

Transaction #: 4355628	
Date of Transaction: 08/20/2018	
CUSTOMER:	
THOMAS J ARKOOSH 10923 VALLEROSA STREET LAS VEGAS,NV 89141 US	

LINE #	QTY	DESCRIPTION	REMARKS	UNIT PRICE	TOTAL
1	1.00	LOCATABLE MINERALS / MINING CLAIMS- NOT NEW-UNADJUD,ONE AUTH NO. ONLY / MINING CLAIM MONEY RECEIVED CASES: AMC420119/\$6820.00		- n/a -	6820.00
TOTAL:					\$6,820.00

PAYMENT INFORMATION			
NOTE: Items will appear on credit card statement as "BLM O Mining Claim".			
1	AMOUNT:	6820.00	POSTMARKED: N/A
	TYPE:	CREDIT CARD	RECEIVED: 08/20/2018
	NAME:	THOMAS J ARKOOSH 10923 VALLEROSA STREET LAS VEGAS NV 89141 US	
	CARD NO:	XXXXXXXXXXXX9416	AUTH CODE: 190168
	NAME ON CARD:	THOMAS J ARKOOSH	
	SIGNATURE:		

REMARKS

This receipt was generated by the automated BLM Collections and Billing System and is a paper representation of a portion of the official electronic record contained therein.

**DEPARTMENT OF THE INTERIOR
BUREAU OF LAND MANAGEMENT
MINING CLAIMS**

MC Maintenance Fees Paid Through the BLM Pay Portal

CBS Receipt: 3966797

Printed For Lead File # AMC425251

Agency Tracking ID: 1504132834

Assessment Year: 2018

Number of BLM Serial Nr: 44

Paid On: 08/30/2017

Total Amount Paid: \$6,820.00

Claim Name	BLM Serial No	Lead File No	Amount Paid
BB-1	AMC420119	AMC420119	\$155.00
BB-2	AMC420120	AMC420119	\$155.00
BB-3	AMC420121	AMC420119	\$155.00
BB-4	AMC420122	AMC420119	\$155.00
BB-5	AMC420123	AMC420119	\$155.00
GBM-1	AMC420131	AMC420131	\$155.00
GBM-2	AMC420132	AMC420131	\$155.00
GBM-3	AMC420133	AMC420131	\$155.00
GBM-4	AMC420134	AMC420131	\$155.00
GBM-10	AMC420140	AMC420131	\$155.00
GBM-11	AMC420141	AMC420131	\$155.00
GBM-12	AMC420142	AMC420131	\$155.00
GBM-13	AMC420143	AMC420131	\$155.00
GBM-19	AMC420149	AMC420131	\$155.00
GBM-20	AMC420150	AMC420131	\$155.00
BB-13	AMC425251	AMC425251	\$155.00
BB-14	AMC425252	AMC425251	\$155.00
BB-15	AMC425253	AMC425251	\$155.00
BB-16	AMC425254	AMC425251	\$155.00
BB-17	AMC425255	AMC425251	\$155.00
BB-18	AMC425256	AMC425251	\$155.00
BB-19	AMC425257	AMC425251	\$155.00
BB-20	AMC425258	AMC425251	\$155.00
BB-21	AMC425259	AMC425251	\$155.00
BB-22	AMC425260	AMC425251	\$155.00
BB-23	AMC425261	AMC425251	\$155.00
BB-24	AMC425262	AMC425251	\$155.00
BB-25	AMC425263	AMC425251	\$155.00
BB-26	AMC425264	AMC425251	\$155.00
BB-27	AMC425265	AMC425251	\$155.00
BB-28	AMC425266	AMC425251	\$155.00
BB-29	AMC425267	AMC425251	\$155.00
BB-30	AMC425268	AMC425251	\$155.00
BB-31	AMC425269	AMC425251	\$155.00
BB-32	AMC425270	AMC425251	\$155.00
BB-33	AMC425271	AMC425251	\$155.00

Run Date: 09/05/17

Run Time: 02:33 PM

**DEPARTMENT OF THE INTERIOR
BUREAU OF LAND MANAGEMENT
MINING CLAIMS**

MC Maintenance Fees Paid Through the BLM Pay Portal

CBS Receipt: 3966797

Printed For Lead File # AMC425251

Agency Tracking ID: 1504132834

Assessment Year: 2018

Number of BLM Serial Nr: 44

Paid On: 08/30/2017

Total Amount Paid: \$6,820.00

Claim Name	BLM Serial No	Lead File No	Amount Paid
BB-40	AMC425272	AMC425251	\$155.00
BB-41	AMC425273	AMC425251	\$155.00
BB-42	AMC425274	AMC425251	\$155.00
BB-43	AMC425275	AMC425251	\$155.00
BB-44	AMC425276	AMC425251	\$155.00
BB-45	AMC425277	AMC425251	\$155.00
BB-46	AMC425278	AMC425251	\$155.00
BB-47	AMC425279	AMC425251	\$155.00

United States Department of the Interior

Bureau of Land Management
 BUSINESS & SUPPORT SVCS DIV
 ONE N CENTRAL AVE SUITE 800
 PHOENIX, AZ 85004 -4427
 Phone: 602-417-9200

Receipt

No: 3966797

2

Transaction #: 4076681	
Date of Transaction: 08/30/2017	
CUSTOMER:	
JOHN T ARKOOSH 3415 KLAMATH WOODS PLACE CONCORD, CA 94518 US	

LINE #	QTY	DESCRIPTION	REMARKS	UNIT PRICE	TOTAL
1	1.00	LOCATABLE MINERALS / MINING CLAIMS- NOT NEW-UNADJUD, ONE AUTH NO. ONLY / MINING CLAIM MONEY RECEIVED CASES: AMC425255/\$6820.00		- n/a -	6820.00
TOTAL:					\$6,820.00

PAYMENT INFORMATION			
NOTE: Items will appear on credit card statement as "BLM O Mining Claim".			
1	AMOUNT:	6820.00	POSTMARKED: N/A
	TYPE:	CREDIT CARD	RECEIVED: 08/30/2017
	NAME:	JOHN T ARKOOSH 3415 KLAMATH WOODS PLACE CONCORD CA 94518 US	
	CARD NO:	XXXXXXXXXXXX1174	AUTH CODE: 41888D
	NAME ON CARD:	JOHN T ARKOOSH	
	EXPIRES:	09/2020	
	SIGNATURE:		

REMARKS

This receipt was generated by the automated BLM Collections and Billing System and is a paper representation of a portion of the official electronic record contained therein.

**DEPARTMENT OF THE INTERIOR
BUREAU OF LAND MANAGEMENT
MINING CLAIMS**

MC Maintenance Fees Paid Through the BLM Pay Portal

CBS Receipt: 3646143Printed For Lead File # **AMC425251**

Agency Tracking ID: 1472495822

Assessment Year: 2017

Number of BLM Serial Nr: 66

Paid On: 08/29/2016

Total Amount Paid: \$10,230.00

Claim Name	BLM Serial No	Lead File No	Amount Paid
BB-1	AMC420119	AMC420119	\$155.00
BB-2	AMC420120	AMC420119	\$155.00
BB-3	AMC420121	AMC420119	\$155.00
BB-4	AMC420122	AMC420119	\$155.00
BB-5	AMC420123	AMC420119	\$155.00
GBM-1	AMC420131	AMC420131	\$155.00
GBM-2	AMC420132	AMC420131	\$155.00
GBM-3	AMC420133	AMC420131	\$155.00
GBM-4	AMC420134	AMC420131	\$155.00
GBM-5	AMC420135	AMC420131	\$155.00
GBM-10	AMC420140	AMC420131	\$155.00
GBM-11	AMC420141	AMC420131	\$155.00
GBM-12	AMC420142	AMC420131	\$155.00
GBM-13	AMC420143	AMC420131	\$155.00
GBM-14	AMC420144	AMC420131	\$155.00
GBM-19	AMC420149	AMC420131	\$155.00
GBM-20	AMC420150	AMC420131	\$155.00
GBM-21	AMC420151	AMC420131	\$155.00
GBM-22	AMC420152	AMC420131	\$155.00
GBM-23	AMC420153	AMC420131	\$155.00
GBM-28	AMC420158	AMC420131	\$155.00
GBM-29	AMC420159	AMC420131	\$155.00
GBM-30	AMC420160	AMC420131	\$155.00
GBM-31	AMC420161	AMC420131	\$155.00
GBM-32	AMC420162	AMC420131	\$155.00
GBM-37	AMC420167	AMC420131	\$155.00
GBM-38	AMC420168	AMC420131	\$155.00
GBM-39	AMC420169	AMC420131	\$155.00
GBM-40	AMC420170	AMC420131	\$155.00
GBM-46	AMC420176	AMC420131	\$155.00
GBM-47	AMC420177	AMC420131	\$155.00
GBM-48	AMC420178	AMC420131	\$155.00
GBM-49	AMC420179	AMC420131	\$155.00
GBM-55	AMC420185	AMC420131	\$155.00
GBM-56	AMC420186	AMC420131	\$155.00
GBM-57	AMC420187	AMC420131	\$155.00

**DEPARTMENT OF THE INTERIOR
BUREAU OF LAND MANAGEMENT
MINING CLAIMS**

MC Maintenance Fees Paid Through the BLM Pay Portal

CBS Receipt: 3646143

Printed For Lead File # AMC425251

Agency Tracking ID: 1472495822

Assessment Year: 2017

Number of BLM Serial Nr: 66

Paid On: 08/29/2016

Total Amount Paid: \$10,230.00

Claim Name	BLM Serial No	Lead File No	Amount Paid
GBM-58	AMC420188	AMC420131	\$155.00
BB-13	AMC425251	AMC425251	\$155.00
BB-14	AMC425252	AMC425251	\$155.00
BB-15	AMC425253	AMC425251	\$155.00
BB-16	AMC425254	AMC425251	\$155.00
BB-17	AMC425255	AMC425251	\$155.00
BB-18	AMC425256	AMC425251	\$155.00
BB-19	AMC425257	AMC425251	\$155.00
BB-20	AMC425258	AMC425251	\$155.00
BB-21	AMC425259	AMC425251	\$155.00
BB-22	AMC425260	AMC425251	\$155.00
BB-23	AMC425261	AMC425251	\$155.00
BB-24	AMC425262	AMC425251	\$155.00
BB-25	AMC425263	AMC425251	\$155.00
BB-26	AMC425264	AMC425251	\$155.00
BB-27	AMC425265	AMC425251	\$155.00
BB-28	AMC425266	AMC425251	\$155.00
BB-29	AMC425267	AMC425251	\$155.00
BB-30	AMC425268	AMC425251	\$155.00
BB-31	AMC425269	AMC425251	\$155.00
BB-32	AMC425270	AMC425251	\$155.00
BB-33	AMC425271	AMC425251	\$155.00
BB-40	AMC425272	AMC425251	\$155.00
BB-41	AMC425273	AMC425251	\$155.00
BB-42	AMC425274	AMC425251	\$155.00
BB-43	AMC425275	AMC425251	\$155.00
BB-44	AMC425276	AMC425251	\$155.00
BB-45	AMC425277	AMC425251	\$155.00
BB-46	AMC425278	AMC425251	\$155.00
BB-47	AMC425279	AMC425251	\$155.00

United States Department of the Interior
Bureau of Land Management
 BUSINESS & SUPPORT SVCS DIV
 ONE N CENTRAL AVE SUITE 800
 PHOENIX, AZ 85004 -4427
 Phone: (602) 417-9200

Receipt

No: 3646143

Transaction #: 3750124	
Date of Transaction: 08/29/2016	
CUSTOMER:	
THOMAS J ARKOOSH 10923 VALLEROSA STREET LAS VEGAS,NV 89141 US	

LINE #	QTY	DESCRIPTION	REMARKS	UNIT PRICE	TOTAL
1	1.00	LOCATABLE MINERALS / MINING CLAIMS- NOT NEW-UNADJUD,ONE AUTH NO. ONLY / MINING CLAIM MONEY RECEIVED CASES: AMC425255/\$10230.00		- n/a -	10230.00
TOTAL:					\$10,230.00

PAYMENT INFORMATION			
NOTE: Items will appear on credit card statement as "BLM O Mining Claim".			
1	AMOUNT:	10230.00	POSTMARKED: N/A
	TYPE:	CREDIT CARD	RECEIVED: 08/29/2016
	NAME:	THOMAS J ARKOOSH 10923 VALLEROSA STREET LAS VEGAS NV 89141 US	
	CARD NO:	XXXXXXXXXXXX3330	AUTH CODE: 124105
	NAME ON CARD:	THOMAS J ARKOOSH	
	EXPIRES:	07/2019	
	SIGNATURE:		

REMARKS

This receipt was generated by the automated BLM Collections and Billing System and is a paper representation of a portion of the official electronic record contained therein.

**DEPARTMENT OF THE INTERIOR
BUREAU OF LAND MANAGEMENT
MINING CLAIMS**

MC Maintenance Fees Paid Through the BLM Pay Portal

CBS Receipt: 3363625

Printed For Lead File # **AMC425251**

Agency Tracking ID: 1439225493

Number of BLM Serial Nr: 97

Assessment Year: 2016

Paid On: 08/10/2015

Total Amount Paid: \$15,035.00

Claim Name	BLM Serial No	Lead File No	Amount Paid
BB-1	AMC420119	AMC420119	\$155.00
BB-2	AMC420120	AMC420119	\$155.00
BB-3	AMC420121	AMC420119	\$155.00
BB-4	AMC420122	AMC420119	\$155.00
BB-5	AMC420123	AMC420119	\$155.00
GBM-1	AMC420131	AMC420131	\$155.00
GBM-2	AMC420132	AMC420131	\$155.00
GBM-3	AMC420133	AMC420131	\$155.00
GBM-4	AMC420134	AMC420131	\$155.00
GBM-5	AMC420135	AMC420131	\$155.00
GBM-6	AMC420136	AMC420131	\$155.00
GBM-7	AMC420137	AMC420131	\$155.00
GBM-8	AMC420138	AMC420131	\$155.00
GBM-9	AMC420139	AMC420131	\$155.00
GBM-10	AMC420140	AMC420131	\$155.00
GBM-11	AMC420141	AMC420131	\$155.00
GBM-12	AMC420142	AMC420131	\$155.00
GBM-13	AMC420143	AMC420131	\$155.00
GBM-14	AMC420144	AMC420131	\$155.00
GBM-15	AMC420145	AMC420131	\$155.00
GBM-16	AMC420146	AMC420131	\$155.00
GBM-17	AMC420147	AMC420131	\$155.00
GBM-18	AMC420148	AMC420131	\$155.00
GBM-19	AMC420149	AMC420131	\$155.00
GBM-20	AMC420150	AMC420131	\$155.00
GBM-21	AMC420151	AMC420131	\$155.00
GBM-22	AMC420152	AMC420131	\$155.00
GBM-23	AMC420153	AMC420131	\$155.00
GBM-24	AMC420154	AMC420131	\$155.00
GBM-25	AMC420155	AMC420131	\$155.00
GBM-26	AMC420156	AMC420131	\$155.00
GBM-27	AMC420157	AMC420131	\$155.00
GBM-28	AMC420158	AMC420131	\$155.00
GBM-29	AMC420159	AMC420131	\$155.00
GBM-30	AMC420160	AMC420131	\$155.00
GBM-31	AMC420161	AMC420131	\$155.00

**DEPARTMENT OF THE INTERIOR
BUREAU OF LAND MANAGEMENT
MINING CLAIMS**

MC Maintenance Fees Paid Through the BLM Pay Portal

Claim Name	BLM Serial No	Lead File No	Amount Paid
GBM-32	AMC420162	AMC420131	\$155.00
GBM-33	AMC420163	AMC420131	\$155.00
GBM-34	AMC420164	AMC420131	\$155.00
GBM-35	AMC420165	AMC420131	\$155.00
GBM-36	AMC420166	AMC420131	\$155.00
GBM-37	AMC420167	AMC420131	\$155.00
GBM-38	AMC420168	AMC420131	\$155.00
GBM-39	AMC420169	AMC420131	\$155.00
GBM-40	AMC420170	AMC420131	\$155.00
GBM-41	AMC420171	AMC420131	\$155.00
GBM-42	AMC420172	AMC420131	\$155.00
GBM-43	AMC420173	AMC420131	\$155.00
GBM-44	AMC420174	AMC420131	\$155.00
GBM-45	AMC420175	AMC420131	\$155.00
GBM-46	AMC420176	AMC420131	\$155.00
GBM-47	AMC420177	AMC420131	\$155.00
GBM-48	AMC420178	AMC420131	\$155.00
GBM-49	AMC420179	AMC420131	\$155.00
GBM-50	AMC420180	AMC420131	\$155.00
GBM-51	AMC420181	AMC420131	\$155.00
GBM-52	AMC420182	AMC420131	\$155.00
GBM-53	AMC420183	AMC420131	\$155.00
GBM-54	AMC420184	AMC420131	\$155.00
GBM-55	AMC420185	AMC420131	\$155.00
GBM-56	AMC420186	AMC420131	\$155.00
GBM-57	AMC420187	AMC420131	\$155.00
GBM-58	AMC420188	AMC420131	\$155.00
GBM-59	AMC420189	AMC420131	\$155.00
GBM-60	AMC420190	AMC420131	\$155.00
GBM-61	AMC420191	AMC420131	\$155.00
GBM-62	AMC420192	AMC420131	\$155.00
GBM-63	AMC420193	AMC420131	\$155.00
BB-13	AMC425251	AMC425251	\$155.00
BB-14	AMC425252	AMC425251	\$155.00
BB-15	AMC425253	AMC425251	\$155.00
BB-16	AMC425254	AMC425251	\$155.00
BB-17	AMC425255	AMC425251	\$155.00
BB-18	AMC425256	AMC425251	\$155.00
BB-19	AMC425257	AMC425251	\$155.00
BB-20	AMC425258	AMC425251	\$155.00
BB-21	AMC425259	AMC425251	\$155.00

NO WARRANTY IS MADE BY BLM FOR USE OF THE DATA FOR PURPOSES NOT INTENDED BY BLM

**DEPARTMENT OF THE INTERIOR
BUREAU OF LAND MANAGEMENT
MINING CLAIMS**

MC Maintenance Fees Paid Through the BLM Pay Portal

Claim Name	BLM Serial No	Lead File No	Amount Paid
BB-22	AMC425260	AMC425251	\$155.00
BB-23	AMC425261	AMC425251	\$155.00
BB-24	AMC425262	AMC425251	\$155.00
BB-25	AMC425263	AMC425251	\$155.00
BB-26	AMC425264	AMC425251	\$155.00
BB-27	AMC425265	AMC425251	\$155.00
BB-28	AMC425266	AMC425251	\$155.00
BB-29	AMC425267	AMC425251	\$155.00
BB-30	AMC425268	AMC425251	\$155.00
BB-31	AMC425269	AMC425251	\$155.00
BB-32	AMC425270	AMC425251	\$155.00
BB-33	AMC425271	AMC425251	\$155.00
BB-40	AMC425272	AMC425251	\$155.00
BB-41	AMC425273	AMC425251	\$155.00
BB-42	AMC425274	AMC425251	\$155.00
BB-43	AMC425275	AMC425251	\$155.00
BB-44	AMC425276	AMC425251	\$155.00
BB-45	AMC425277	AMC425251	\$155.00
BB-46	AMC425278	AMC425251	\$155.00
BB-47	AMC425279	AMC425251	\$155.00

United States Department of the Interior
Bureau of Land Management
 BUSINESS & SUPPORT SVCS DIV
 ONE N CENTRAL AVE SUITE 800
 PHOENIX, AZ 85004 -4427
 Phone: (602) 417-9200

Receipt

No: 3363625

Transaction #: 3461660	
Date of Transaction: 08/10/2015	
CUSTOMER:	
THOMAS J ARKOOSH 10923 VALLEROSA STREET LAS VEGAS,NV 89141 US	

LINE #	QTY	DESCRIPTION	REMARKS	UNIT PRICE	TOTAL
1	1.00	LOCATABLE MINERALS / MINING CLAIMS- NOT NEW-UNADJUD,ONE AUTH NO. ONLY / MINING CLAIM MONEY RECEIVED CASES: AMC420189/\$15035.00		- n/a -	15035.00
TOTAL:					\$15,035.00

PAYMENT INFORMATION				
NOTE: Items will appear on credit card statement as "BLM O Mining Claim".				
1	AMOUNT:	15035.00	POSTMARKED:	N/A
	TYPE:	CREDIT CARD	RECEIVED:	08/10/2015
	NAME:	THOMAS J ARKOOSH 10923 VALLEROSA STREET LAS VEGAS NV 89141 US		
	CARD NO:	XXXXXXXXXXXX3330	AUTH CODE:	165849
	NAME ON CARD:	THOMAS J ARKOOSH		
	EXPIRES:	07/2019		
	SIGNATURE:			

REMARKS

This receipt was generated by the automated BLM Collections and Billing System and is a paper representation of a portion of the official electronic record contained therein.

Ave 420119
420131
425251

MAINTENANCE FEE PAYMENT

Claimant Name: GOLD BASIN Mining EXP LLC
 Address: 10923 VALLERUSA STREET
 City: LAS VEGAS State: NV Zip: 89141
 Telephone: 702-834-8775
 E-mail address: AU881234@gmail.com
 Signature: Thomas J. Arkosh

RECEIVED
 BLM AZ STATE OFFICE
 2014 AUG 18 P 2:38
 PHOENIX, ARIZONA
 BLM
 Date
 Stamp

Check here if this is a change of address.

LINE NO.	AMC NUMBER	CLAIM/SITE NAME	COUNTY RECORDER DATA (If available)	TWP	RNG	SEC
1	420131	GBM-1	2012 049 662	29N	18W	16
2	420132	GBM-2	2012 049 663	29N	18W	16
3	420133	GBM-3	2012 049 664	29N	18W	16
4	420134	GBM-4	2012 049 665	29N	18W	16
5	420135	GBM-5	2012 049 666	29N	18W	16
6	420136	GBM-6	2012 049 667	29N	18W	16
7	420137	GBM-7	2012 049 668	29N	18W	16
8	420138	GBM-8	2012 049 669	29N	18W	16
9	420139	GBM-9	2012 049 670	29N	18W	16
10	420140	GBM-10	2012 049 671	29N	18W	16

List additional claims on Form MCF114.

Bureau of Land Management
 Arizona State Office
www.blm.gov/az/

ENTERED
 AUG 22 2014
 BY: PB

No. of Claims: 97 x \$155 = \$15,035.00
 Check No: 1014 Init. CAU
 Receipt No.: 3105490
 For BLM Use Only

Form: MCF112
 Revised July 2009

SUPPLEMENTAL ATTACHMENT

May be used with the following forms for listing additional mining claims:

Check One.

- Affidavit of Performance of Annual Work
- Maintenance Fee Payment
- Notice of Intent to Hold Mining Claims
- Notice of Non-Liability for Labor and Materials Furnished

BLM
Date
Stamp

RECEIVED
BLM AZ STATE OFFICE
2011 AUG 18 2:38 PM
PHOENIX, ARIZONA

LINE NO.	AMC NUMBER	CLAIM/SITE NAME	COUNTY RECORDER DATA (if available)	TWP	RANGE	SECTION
11	420141	GBM-11	2012049672	29N	18W	16
12	420142	GBM-12	2012049673	29N	18W	16
13	420143	GBM-13	2012049674	29N	18W	16
14	420144	GBM-14	2012049675	29N	18W	16
15	420145	GBM-15	2012049676	29N	18W	16
16	420146	GBM-16	2012049677	29N	18W	16
17	420147	GBM-17	2012049678	29N	18W	16
18	420148	GBM-18	2012049679	29N	18W	16
19	420149	GBM-19	2012049680	29N	18W	16
20	420150	GBM-20	2012049681	29N	18W	16
21	420151	GBM-21	2012049682	29N	18W	16
22	420152	GBM-22	2012049683	29N	18W	16
23	420153	GBM-23	2012049684	29N	18W	16
24	420154	GBM-24	2012049685	29N	18W	16
25	420155	GBM-25	2012049686	29N	18W	16
26	420156	GBM-26	2012049687	29N	18W	16
27	420157	GBM-27	2012049688	29N	18W	16
28	420158	GBM-28	2012052306	29N	18W	17
29	420159	GBM-29	2012052307	29N	18W	17

Form MCF114
Revised June 2005

SUPPLEMENTAL ATTACHMENT

May be used with the following forms for listing additional mining claims:

Check One.

- Affidavit of Performance of Annual Work
- Maintenance Fee Payment
- Notice of Intent to Hold Mining Claims
- Notice of Non-Liability for Labor and Materials Furnished

BLM
Date
Stamp

PHOENIX, ARIZONA

2014 AUG 18 3:30 PM

RECEIVED
BLM AZ STATE OFFICE

LINE NO.	AMC NUMBER	CLAIM/SITE NAME	COUNTY RECORDER DATA (if available)	TWP	RNG	SECTION
30	420160	GBM-30	2012052308	29N	18W	17
31	420161	GBM-31	2012052309	29N	18W	17
32	420162	GBM-32	2012052310	29N	18W	17
33	420163	GBM-33	2012052311	29N	18W	17
34	420164	GBM-34	2012052312	29N	18W	17
35	420165	GBM-35	2012052313	29N	18W	17
36	420166	GBM-36	2012052314	29N	18W	17
37	420167	GBM-37	2012052315	29N	18W	17
38	420168	GBM-38	2012052316	29N	18W	17
39	420169	GBM-39	2012052317	29N	18W	17
40	420170	GBM-40	2012052318	29N	18W	17
41	420171	GBM-41	2012052319	29N	18W	17
42	420172	GBM-42	2012052320	29N	18W	17
43	420173	GBM-43	2012052321	29N	18W	17
44	420174	GBM-44	2012052322	29N	18W	17
45	420175	GBM-45	2012052323	29N	18W	17
46	420176	GBM-46	2012052324	29N	18W	17
47	420177	GBM-47	2012052325	29N	18W	17
48	420178	GBM-48	2012052326	29N	18W	17

Form MCF114
Revised June 2005

This form is available from the Arizona Department of Mines & Mineral Resources and may be reproduced.

SUPPLEMENTAL ATTACHMENT

May be used with the following forms for listing additional mining claims:
Check One.

- Affidavit of Performance of Annual Work
- Maintenance Fee Payment
- Notice of Intent to Hold Mining Claims
- Notice of Non-Liability for Labor and Materials Furnished

RECEIVED
 BLM AZ STATE OFFICE
 214 AUG 18 P 2:39
 PHOENIX, ARIZONA
 BLM
 Date
 Stamp

LINE NO.	AMC NUMBER	CLAIM/SITE NAME	COUNTY RECORDER DATA (If available)	TWP	RNG	SEC
49	420179	GBM-49	2012052327	29N	18W	17
50	420180	GBM-50	2012052328	29N	18W	17
51	420181	GBM-51	2012052329	29N	18W	17
52	420182	GBM-52	2012052330	29N	18W	17
53	420183	GBM-53	2012052331	29N	18W	17
54	420184	GBM-54	2012052332	29N	18W	17
55	420185	GBM-55	2012052333	29N	18W	17
56	420186	GBM-56	2012052334	29N	18W	17
57	420187	GBM-57	2012052335	29N	18W	17
58	420188	GBM-58	2012052336	29N	18W	17
59	420189	GBM-59	2012052337	29N	18W	17
60	420190	GBM-60	2012052338	29N	18W	17
61	420191	GBM-61	2012052339	29N	18W	17
62	420192	GBM-62	2012052340	29N	18W	17
63	420193	GBM-63	2012052341	29N	18W	17
64	420119	BB-1	2012051072	29N	17W	19
65	420120	BB-2	2012051073	29N	17W	19
66	420121	BB-3	2012051074	29N	17W	19
67	420122	BB-4	2012051075	29N	17W	19

Form MCF114
Revised June 2005

SUPPLEMENTAL ATTACHMENT

May be used with the following forms for listing additional mining claims:

Check One.

- Affidavit of Performance of Annual Work
- Maintenance Fee Payment
- Notice of Intent to Hold Mining Claims
- Notice of Non-Liability for Labor and Materials Furnished

RECEIVED
BLM AZ STATE OFFICE
PHOENIX, ARIZONA
2014 AUG 18 P 2:39
BLM
Date
Stamp

LINE NO.	AMC NUMBER	CLAIM/SITE NAME	COUNTY RECORDER DATA (If available)	TWP	RNG	SEC
68	420123	BB-5	2012 051076	29N	17W	19
69	425251	BB-13	2013 050598	29N	17W	20
70	425252	BB-14	2013 050599	29N	17W	20
71	425253	BB-15	2013 050600	29N	17W	20
72	425254	BB-16	2013 050601	29N	17W	20
73	425255	BB-17	2013 050602	29N	17W	20
74	425256	BB-18	2013 050603	29N	17W	20
75	425257	BB-19	2013 050604	29N	17W	20
76	425258	BB-20	2013 050605	29N	17W	20
77	425259	BB-21	2013 050606	29N	17W	20
78	425260	BB-22	2013 050607	29N	17W	20
79	425261	BB-23	2013 050608	29N	17W	20
80	425262	BB-24	2013 050609	29N	17W	20
81	425263	BB-25	2013 050610	29N	17W	20
82	425264	BB-26	2013 050611	29N	17W	20
83	425265	BB-27	2013 050612	29N	17W	20
84	425266	BB-28	2013 050613	29N	17W	20
85	425267	BB-29	2013 050614	29N	17W	20
86	425268	BB-30	2013 050615	29N	17W	20

Form MCF114
Revised June 2005

This form is available from the Arizona Department of Mines & Mineral Resources and may be reproduced.

SUPPLEMENTAL ATTACHMENT

May be used with the following forms for listing additional mining claims:

Check One.

- Affidavit of Performance of Annual Work
- Maintenance Fee Payment
- Notice of Intent to Hold Mining Claims
- Notice of Non-Liability for Labor and Materials Furnished

BLM Date Stamp	PHOENIX, ARIZONA	2014 AUG 18 P 2 39	RECEIVED BLM AZ STATE OFFICE
----------------------	------------------	--------------------	---------------------------------

LINE NO.	AMC NUMBER	CLAIM/SITE NAME	COUNTY RECORDER DATA (If available)	TWP.	RANGE	SEC
87	425269	BB-31	2013 050616	29N	17W	17
88	425270	BB-32	2013 053 617	29N	17W	17
89	425271	BB-33	2013053618	29N	17W	17
90	425272	BB-40	2013053619	29N	17W	20
91	425273	BB-41	2013 053 620	29N	17W	17
92	425274	BB-42	2013 053 621	29N	17W	29
93	425275	BB-43	2013 053 622	29N	17W	29
94	425276	BB-44	2013 053 623	29N	17W	29
95	425277	BB-45	2013 053 624	29N	17W	29
96	425278	BB-46	2013 053 625	29N	17W	29
97	425279	BB-47	2013 053 626	29N	17W	29

Form MCF114
Revised June 2005

United States Department of the Interior
Bureau of Land Management
 LANDS/RECREATION & PLANNING
 ONE N CENTRAL AVE
 PHOENIX, AZ 85004 -2203
 Phone: 602-417-9200

Receipt

No: 3105490

Transaction #: 3197140	ENTERED INTO COMPUTER
Date of Transaction: 08/19/2014	
CUSTOMER:	
GOLD BASIN MINING EXP LLC 10923 VALLEROSA ST LAS VEGAS, NV 89141-3927 US	

LINE #	QTY	DESCRIPTION	REMARKS	UNIT PRICE	TOTAL
1	1.00	LOCATABLE MINERALS / MINING CLAIMS-NOT NEW-UNADJUD, ONE AUTH NO. ONLY / MINING CLAIM MONEY RECEIVED CASES: AMC420131/\$15035.00	MAINT FEE PYMNT (97) 2015	- n/a -	15035.00
TOTAL:					\$15,035.00

PAYMENT INFORMATION					
1	AMOUNT:	15035.00	POSTMARKED:	08/15/2014	
	TYPE:	CHECK	RECEIVED:	08/18/2014	
	CHECK NO:	1014			
	NAME:	GOLD BASIN MINING EXP LLC 10923 VALLEROSA ST LAS VEGAS NV 89141-3927 US			

REMARKS

This receipt was generated by the automated BLM Collections and Billing System and is a paper representation of a portion of the official electronic record contained therein.

420119-123

420131-193

425251-279

10923 VALL

-AS VEGAS, NV 89141

RECEIVED
BLM AZ STATE OFFICE

2014 AUG 18 P 2:38

PHOENIX, ARIZONA



1000



85004

U.S. POSTAGE
PAID
LAS VEGAS, NV
89123
AUG 15, 14
AMOUNT

\$1.19

00019941-08

Bureau of Land Management
Arizona State Office
One North Central Avenue
Suite 800
Phoenix, AZ 85004-4427

Message:

97 ROWS RETRIEVED

CBS Export Results Report

Include Resolved Records

Record Status

Error Records (E/M/I)

Accepted Records (A/W)

"On Hold" Records (H)

All Records (for s/n or receipt nr)

Exported, No Results From CBS

New (not yet exported)

Enter export Date (mm/dd/yyyy)

Serial Number match (optional)

Receipt Nr (optional)

Export Nr (exclusive)

LR2000 User (defaults to login)

Responsible Area (Errors Only)

User (U,X)

Programmer (P,X)

All (U,P,X)

[User Guide](#)

[Printable Format \(legal/landscape\)](#)

Resend?	Export Nr	A/D	Serial Nr	Multi	Code	\$ Amount	Remarks	Receipt Nr	LR2000 User	#Msg	Resolved?	OK	Stat	Area	CBS Msg 1	Stat2	Area	Msg 2	CBS 392 ID	392 \$ Amt	Action Update Date	Resend	Resend Orig	Export Date
<input type="checkbox"/>	4660396	A	AMC420119	782		155.00	2015;\$1553105490	3105490	PAULINEB	1	<input type="checkbox"/>		A		ACCPT				2082378	15035.00	8/22/2014 9:32			8/22/2014
<input type="checkbox"/>	4660397	A	AMC420120	782		155.00	2015;\$1553105490	3105490	PAULINEB	1	<input type="checkbox"/>		A		ACCPT				2082378	15035.00	8/22/2014 9:32			8/22/2014
<input type="checkbox"/>	4660398	A	AMC420121	782		155.00	2015;\$1553105490	3105490	PAULINEB	1	<input type="checkbox"/>		A		ACCPT				2082378	15035.00	8/22/2014 9:32			8/22/2014
<input type="checkbox"/>	4660399	A	AMC420122	782		155.00	2015;\$1553105490	3105490	PAULINEB	1	<input type="checkbox"/>		A		ACCPT				2082378	15035.00	8/22/2014 9:32			8/22/2014
<input type="checkbox"/>	4660400	A	AMC420123	782		155.00	2015;\$1553105490	3105490	PAULINEB	1	<input type="checkbox"/>		A		ACCPT				2082378	15035.00	8/22/2014 9:32			8/22/2014
<input type="checkbox"/>	4660401	A	AMC420131	782		155.00	2015;\$1553105490	3105490	PAULINEB	1	<input type="checkbox"/>		A		ACCPT				2082378	15035.00	8/22/2014 9:32			8/22/2014
<input type="checkbox"/>	4660402	A	AMC420132	782		155.00	2015;\$1553105490	3105490	PAULINEB	1	<input type="checkbox"/>		A		ACCPT				2082378	15035.00	8/22/2014 9:33			8/22/2014
<input type="checkbox"/>	4660403	A	AMC420133	782		155.00	2015;\$1553105490	3105490	PAULINEB	1	<input type="checkbox"/>		A		ACCPT				2082378	15035.00	8/22/2014 9:33			8/22/2014
<input type="checkbox"/>	4660404	A	AMC420134	782		155.00	2015;\$1553105490	3105490	PAULINEB	1	<input type="checkbox"/>		A		ACCPT				2082378	15035.00	8/22/2014 9:33			8/22/2014
<input type="checkbox"/>	4660405	A	AMC420135	782		155.00	2015;\$1553105490	3105490	PAULINEB	1	<input type="checkbox"/>		A		ACCPT				2082378	15035.00	8/22/2014 9:33			8/22/2014
<input type="checkbox"/>	4660406	A	AMC420136	782		155.00	2015;\$1553105490	3105490	PAULINEB	1	<input type="checkbox"/>		A		ACCPT				2082378	15035.00	8/22/2014 9:33			8/22/2014
<input type="checkbox"/>	4660407	A	AMC420137	782		155.00	2015;\$1553105490	3105490	PAULINEB	1	<input type="checkbox"/>		A		ACCPT				2082378	15035.00	8/22/2014 9:33			8/22/2014
<input type="checkbox"/>	4660408	A	AMC420138	782		155.00	2015;\$1553105490	3105490	PAULINEB	1	<input type="checkbox"/>		A		ACCPT				2082378	15035.00	8/22/2014 9:33			8/22/2014
<input type="checkbox"/>	4660409	A	AMC420139	782		155.00	2015;\$1553105490	3105490	PAULINEB	1	<input type="checkbox"/>		A		ACCPT				2082378	15035.00	8/22/2014 9:33			8/22/2014
<input type="checkbox"/>	4660410	A	AMC420140	782		155.00	2015;\$1553105490	3105490	PAULINEB	1	<input type="checkbox"/>		A		ACCPT				2082378	15035.00	8/22/2014 9:33			8/22/2014
<input type="checkbox"/>	4660411	A	AMC420141	782		155.00	2015;\$1553105490	3105490	PAULINEB	1	<input type="checkbox"/>		A		ACCPT				2082378	15035.00	8/22/2014 9:33			8/22/2014
<input type="checkbox"/>	4660412	A	AMC420142	782		155.00	2015;\$1553105490	3105490	PAULINEB	1	<input type="checkbox"/>		A		ACCPT				2082378	15035.00	8/22/2014 9:33			8/22/2014
<input type="checkbox"/>	4660413	A	AMC420143	782		155.00	2015;\$1553105490	3105490	PAULINEB	1	<input type="checkbox"/>		A		ACCPT				2082378	15035.00	8/22/2014 9:33			8/22/2014
<input type="checkbox"/>	4660414	A	AMC420144	782		155.00	2015;\$1553105490	3105490	PAULINEB	1	<input type="checkbox"/>		A		ACCPT				2082378	15035.00	8/22/2014 9:33			8/22/2014
<input type="checkbox"/>	4660415	A	AMC420145	782		155.00	2015;\$1553105490	3105490	PAULINEB	1	<input type="checkbox"/>		A		ACCPT				2082378	15035.00	8/22/2014 9:33			8/22/2014

NOTICE!!

These documents have been scanned!

Do not place un-scanned documents beneath this notice!

Do not remove this notice from this file!

GPO Jacket No. 560-102
Print Order 61540
Rise Business Services, LLC
Job=AZ15 5/10/2019



Box Number= AZ15036



Claim Begin-End: AMC425251-AMC425279

6 Location Notices-Amendments and Supporting Documents



AZ15036-10

AMC425096-AMC425592

MINING CLAIM STATUS REPORT

Data Entered: 11/12/2013

MTP Checked By: RM
GEO Checked By: RM

LEAD SERIAL NUMBER: AMC 425251 thru AMC 425279

NUMBER OF CLAIMS & TYPE:

CHARGES:

29 LODE
PLACER
ASSOCIATION PLACER
MILL SITE
TUNNEL SITE

Location Fee @ \$34 = \$ 986.00
Processing Fee @ \$20 = \$ 580.00
Maintenance Fee @ \$140 = \$ 4060.00
Add'l Maint Fee for Assoc Placer = \$
SUBTOTAL \$ 5626.00
Other Fees \$
Other Fees \$
TOTAL \$ 5626.00

TOTAL ACREAGE: _____ Per Claim
(Placer Only)

NUMBER OF LOCATORS: _____

DOCUMENTS RECEIVED VIA: Over-the-Counter [] Mail [] TIMELY FILED: Yes [] No []

LEGAL DESCRIPTION: T 29N R 17W SEC 17, 20, 29
T _____ R _____ SEC _____
T _____ R _____ SEC _____
T _____ R _____ SEC _____
T _____ R _____ SEC _____

BLM [] FOREST SERVICE [] SUBJ TO PL 359: Yes [] No []
WILDERNESS AREA [] _____

SPLIT ESTATE: N/A [] SX [] PX [] OTHER [] _____
SRHA [] Was proper Notice filed if located on SHRA Land? Yes [] No []

RECONVEYED MINERALS ON BLM LAND REQUIRE OPENING ORDER FROM 1944 TO 1993:
Open to Entry On _____ N/A []

COMMENTS/STATUS: VOID [] PARTIALLY VOID [] PVT MINERALS [] WITHDRAWN LANDS []
OTHER [] _____

[] Claimant acknowledges that portions of the following claim(s) site(s) may be void or voidable.

Printed Name of Claimant _____ Signature of Claimant _____

*****FINAL ADJUDICATION*****

DATE 8/11/14 INITIALS AT

AMC 425251

2

FEE# 2013050598

OFFICIAL RECORDS OF MOHAVE COUNTY CAROL MEIER, COUNTY RECORDER



09/30/2013 09:47 AM Fee: \$10.00

PAGE: 1 of 2

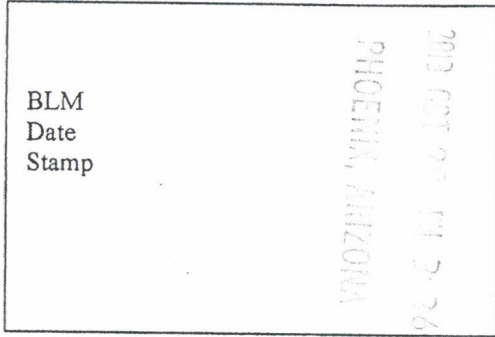
LOCATION NOTICE FOR LODE MINING CLAIM

NOTICE IS HEREBY GIVEN that the BB-13

lode mining claim has been located

RET

by GOLD BASIN MINING EXP LLC whose current mailing address is 10923 VALLEROSA STREET LAS VEGAS, NEVADA 89141



RECEIVED BLM

The general course of this claim is NORTH-SOUTH and it is situated in MOHAVE

County, Arizona. This claim is 1500 feet in length and 600 feet in width. This claim runs

from the location monument on which this location notice is posted approximately 40 feet in a

SOUTH direction to the SOUTH end line and 1460 feet in a NORTH direction to the

NORTH end line. This claim is marked by six monuments, one at each corner and one at the center of each end line of the claim.

The location monument on which this notice is posted is situated within Section _____, Township 29

N, Range 17 W, Gila Salt River Base and Meridian, Arizona and this claim encompasses portions

of the following quarter section (s), section (s), Township (s) and Range (s) NE 1/4 SEC 20,

T 29 N, R 17 W

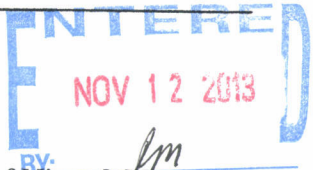
Gila Salt River Base and Meridian, Arizona.

The locality of this claim with reference to some natural object or permanent monument and additional information

(if any) concerning its locality are as follows: EAST OF HUALAPAI WASH

DATED AND POSTED on the ground this 28 day of SEPTEMBER, 2013.

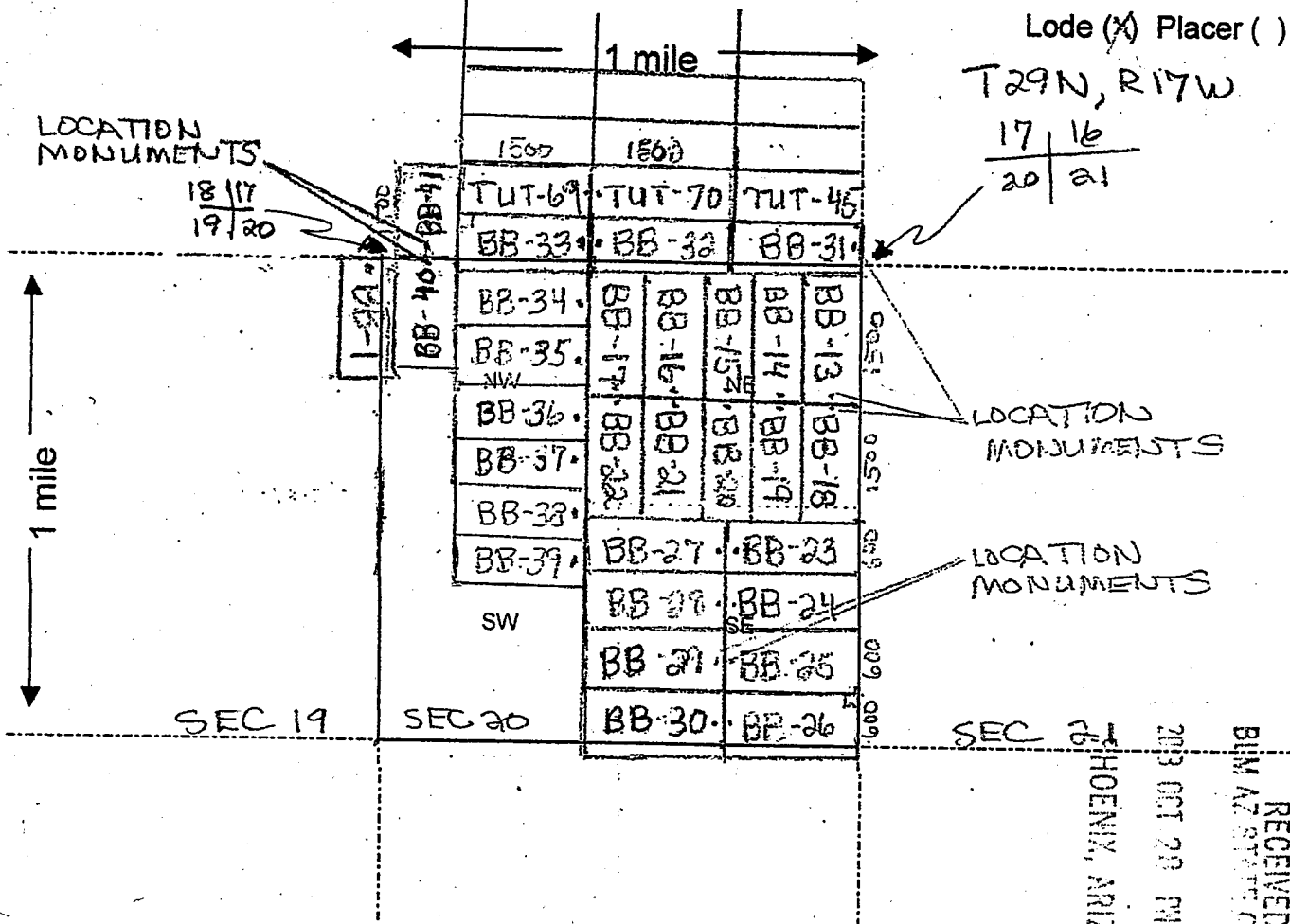
LOCATOR (s) Tom Arkosh



Form MCF100 Revised July 2005

AT01125251

MINING CLAIM MAP



Lode (X) Placer ()
 T29N, R17W
 17 16
 20 21

- Scale: 1" = 2000 feet
- The above map depicts the BB-13 mining claim, which is located in Section (s) 20, Township 29 N, Range 17 W, Gila and Salt River Base and Meridian, MOHAVE County, Arizona.
 - The type of corner and location monuments used are as follows: 2" x 2" WOODEN POSTS 4 FEET HIGH
 - The bearings and distances in degrees and feet between claim corners are as depicted on the map.

RECEIVED
 BLM AZ STATE OFFICE
 2003 OCT 20 PM 3:37
 PHOENIX, ARIZONA

AIHQ125251

FEE# 2013050599

OFFICIAL RECORDS OF MOHAVE COUNTY CAROL MEIER, COUNTY RECORDER



09/30/2013 09:47 AM Fee: \$10.00

PAGE: 1 of 2

LOCATION NOTICE FOR LODE MINING CLAIM

NOTICE IS HEREBY GIVEN that the BB-14

lode mining claim has been located

by GOLD BASIN MINING EXP LLC whose current mailing address is 10923 VALEROSA STREET LAS VEGAS, NEVADA 89141

RECEIVED
BLM
NOV 01 09 09 2013
PHOENIX, ARIZONA

The general course of this claim is NORTH-SOUTH and it is situated in MOHAVE

County, Arizona. This claim is 1500 feet in length and 600 feet in width. This claim runs from the location monument on which this location notice is posted approximately 40 feet in a

SOUTH direction to the SOUTH end line and 1460 feet in a NORTH direction to the NORTH end line. This claim is marked by six monuments, one at each corner and one at the center of each end line of the claim.

The location monument on which this notice is posted is situated within Section 20, Township 29 N, Range 17 W, Gila Salt River Base and Meridian, Arizona and this claim encompasses portions of the following quarter section (s), section (s), Township (s) and Range (s) NE 1/4 SEC 20, T29N, R17W

Gila Salt River Base and Meridian, Arizona.

The locality of this claim with reference to some natural object or permanent monument and additional information (if any) concerning its locality are as follows: EAST OF HUALAPAI WASH

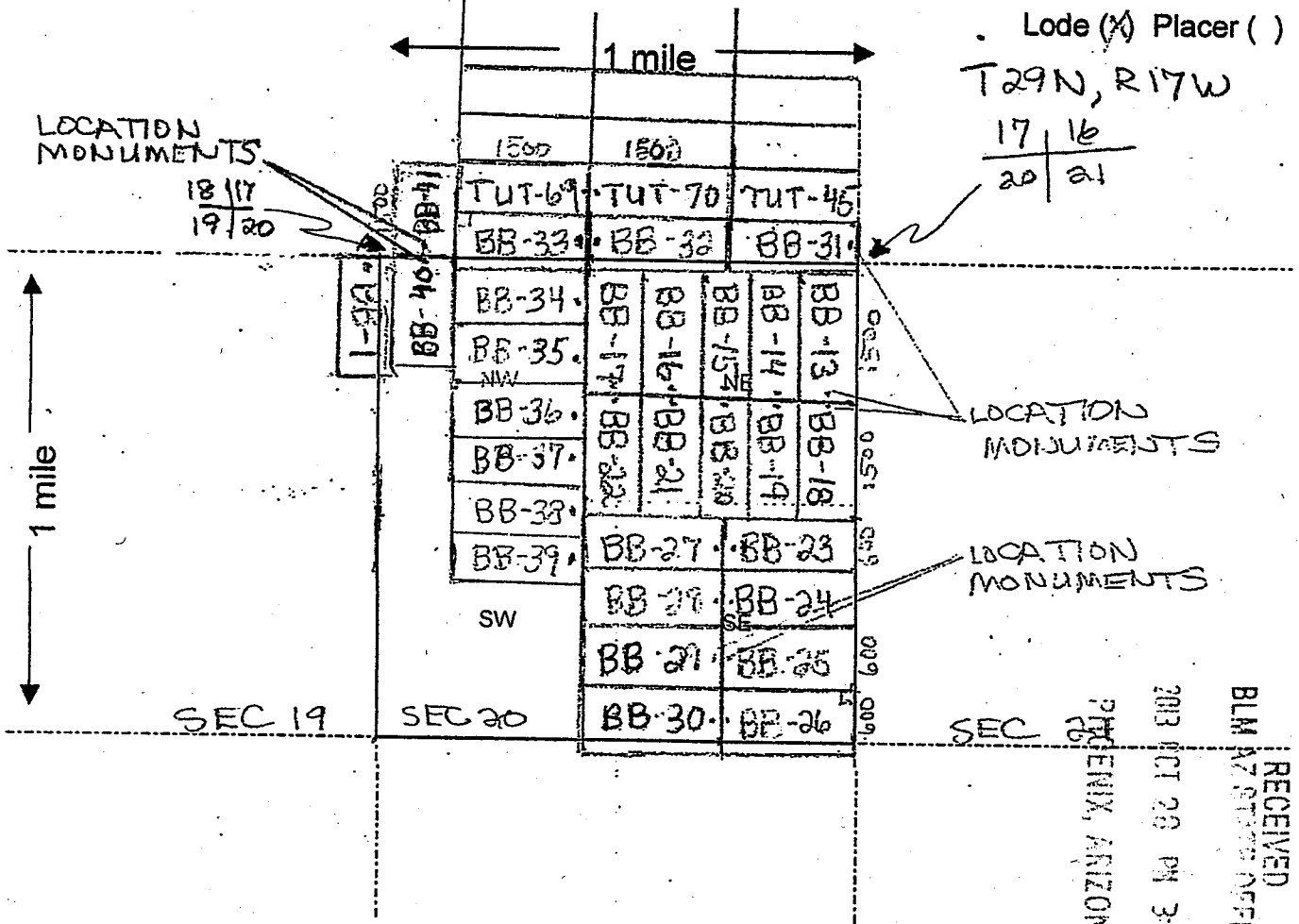
DATED AND POSTED on the ground this 28 day of SEPTEMBER, 2013.

LOCATOR (s) Tom Arkosh

ENTERED
NOV 12 2013
BY: Jm

Form MCF100 Revised July 2005

MINING CLAIM MAP



Scale: 1" = 2000 feet

- The above map depicts the BB-14 mining claim, which is located in Section (s) 20, Township 29 N, Range 17 W, Gila and Salt River Base and Meridian, MOHAVE County, Arizona.
- The type of corner and location monuments used are as follows: 2" x 2" WOODEN POSTS 4 FEET HIGH
- The bearings and distances in degrees and feet between claim corners are as depicted on the map.

Form MCF100a
Revised July 2005

This form is available from the Arizona Department of Mines & Mineral Resources and may be reproduced.

AMC1125252

FEE# 2013050600

OFFICIAL RECORDS OF MOHAVE COUNTY CAROL MEIER, COUNTY RECORDER



09/30/2013 09:47 AM Fee: \$10.00

PAGE: 1 of 2

LOCATION NOTICE FOR LODE MINING CLAIM

NOTICE IS HEREBY GIVEN that the BB-15

lode mining claim has been located

by GOLD BASIN MINING EXP LLC whose current mailing address is 10923 VALLEROSA STREET LAS VEGAS, NEVADA 89141

BLM Date Stamp

RECEIVED BLM AT 09:47 AM 09/30/2013 PHOENIX, ARIZONA

The general course of this claim is NORTH-SOUTH and it is situated in MOHAVE

County, Arizona. This claim is 1500 feet in length and 600 feet in width. This claim runs from the location monument on which this location notice is posted approximately 40 feet in a

SOUTH direction to the SOUTH end line and 1460 feet in a NORTH direction to the NORTH end line. This claim is marked by six monuments, one at each corner and one at the center of each end line of the claim.

The location monument on which this notice is posted is situated within Section 20, Township 29 N, Range 17 W, Gila Salt River Base and Meridian, Arizona and this claim encompasses portions of the following quarter section (s), section (s), Township (s) and Range (s) NE 1/4 SEC 20, T29N, R17W

Gila Salt River Base and Meridian, Arizona.

The locality of this claim with reference to some natural object or permanent monument and additional information (if any) concerning its locality are as follows: EAST OF HUALAPAI WASH

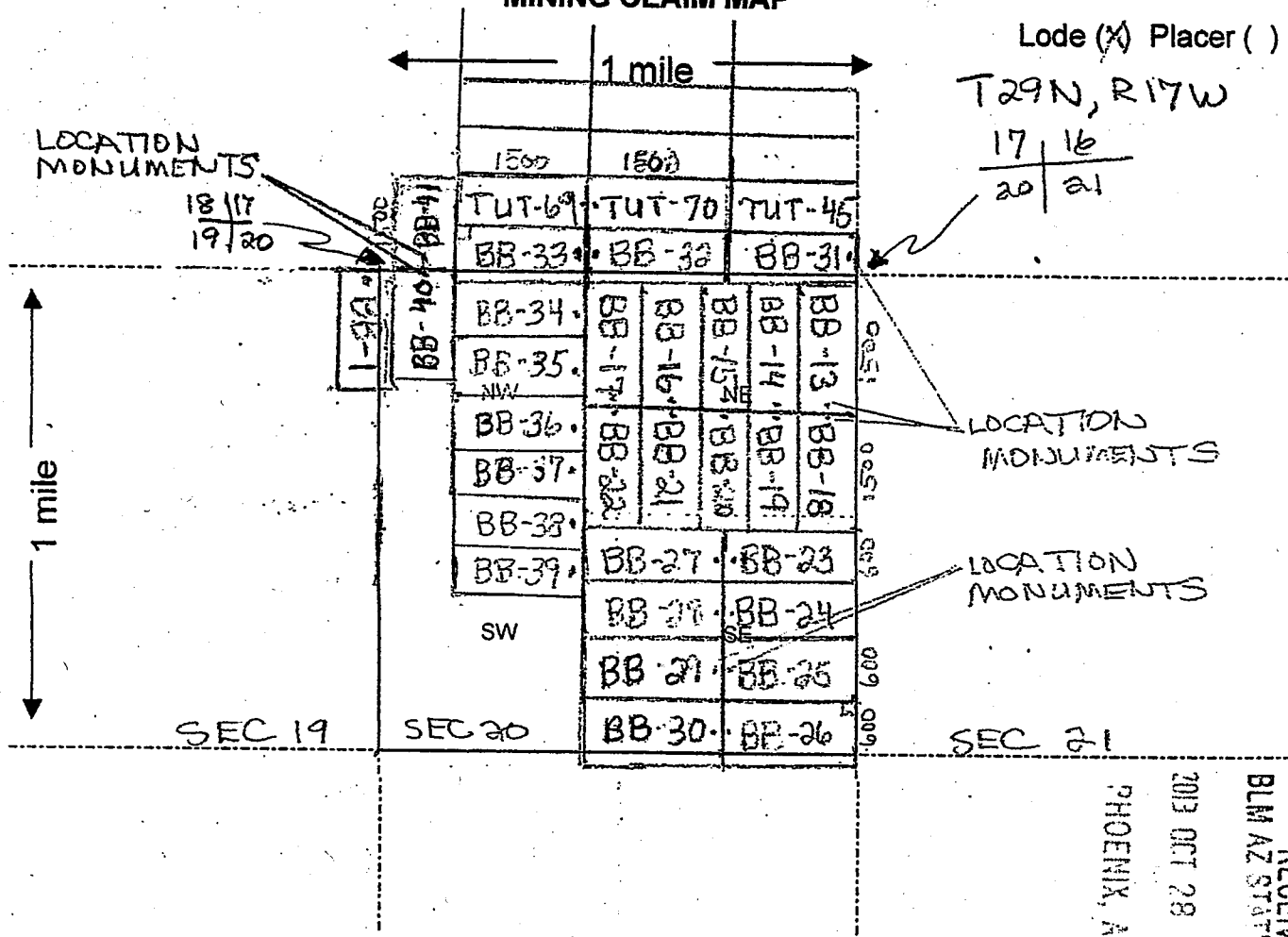
DATED AND POSTED on the ground this 28 day of SEPTEMBER, 2013.

LOCATOR (s) Tom Mkoosh

ENTERED NOV 12 2013

Form MCF100 Revised July 2005

MINING CLAIM MAP



Lode (X) Placer ()
 T29N, R17W
 17 | 16
 20 | 21

Scale: 1" = 2000 feet

1. The above map depicts the BB-15 mining claim, which is located in Section (s) 20, Township 29 N, Range 17 W, Gila and Salt River Base and Meridian, MOHAVE County, Arizona.

2. The type of corner and location monuments used are as follows: 2" x 2" WOODEN POSTS 4 FEET HIGH

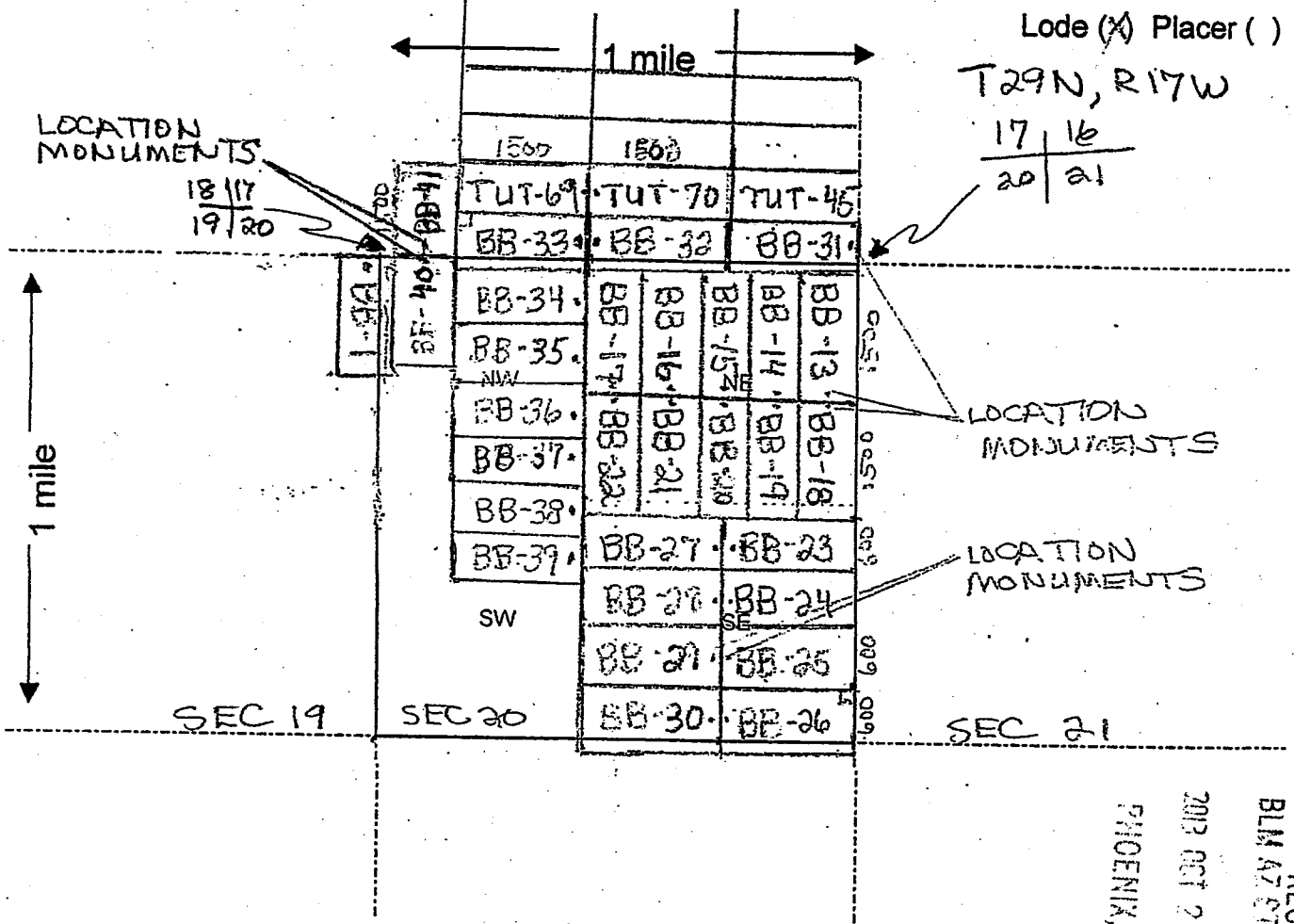
3. The bearings and distances in degrees and feet between claim corners are as depicted on the map.

RECEIVED
 BLM AZ STATE OFFICE
 2013 OCT 28 PM 3:27
 PHOENIX, ARIZONA

AI1101125253

Form MCF100a
 Revised July 2005

MINING CLAIM MAP



Scale: 1" = 2000 feet

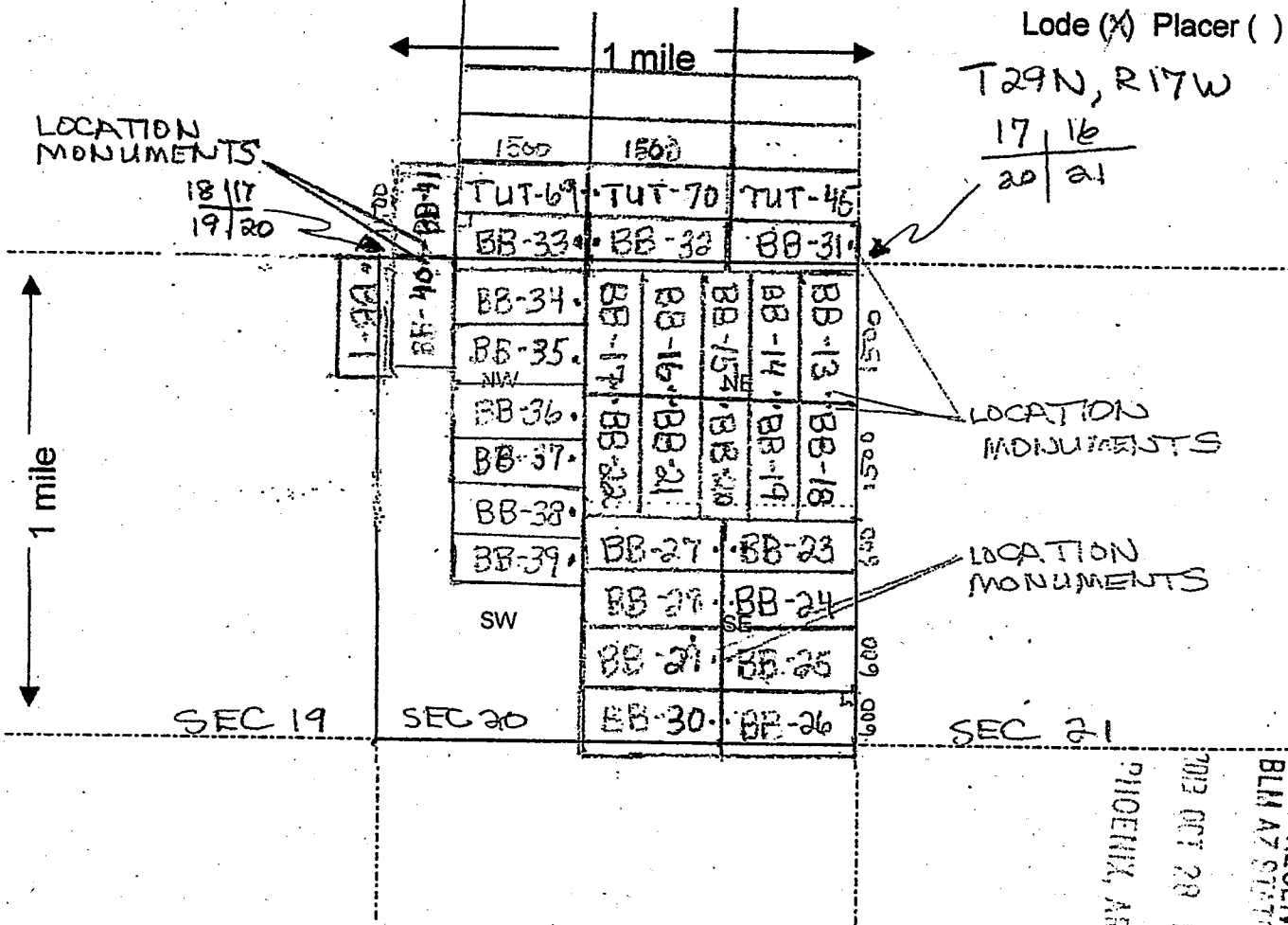
- The above map depicts the BB-16 mining claim, which is located in Section (20), Township 29 N, Range 17 W, Gila and Salt River Base and Meridian, MOHAVE County, Arizona.
- The type of corner and location monuments used are as follows: 2" x 2" WOODEN POSTS 4 FEET HIGH
- The bearings and distances in degrees and feet between claim corners are as depicted on the map.

Form MCF100a
Revised July 2005

This form is available from the Arizona Department of Mines & Mineral Resources and may be reproduced.

RECEIVED
 BLM AZ STATE OFFICE
 2003 OCT 28 PM 3
 PHOENIX, ARIZONA
 A110425254

MINING CLAIM MAP



Scale: 1" = 2000 feet



- The above map depicts the BB-17 mining claim, which is located in Section (s) 20, Township 29 N, Range 17 W, Gila and Salt River Base and Meridian, MOHAVE County, Arizona.
- The type of corner and location monuments used are as follows: 2" x 2" WOODEN POSTS 4 FEET HIGH
- The bearings and distances in degrees and feet between claim corners are as depicted on the map.

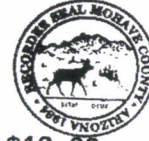
Form MCF100a
Revised July 2005

This form is available from the Arizona Department of Mines & Mineral Resources and may be reproduced.

RECEIVED
 BLM AZ STATE OFFICE
 2012 OCT 28 PM 3:
 PHOENIX, ARIZONA
 ANCU 25255

FEE# 2013050603

OFFICIAL RECORDS
OF MOHAVE COUNTY
CAROL MEIER,
COUNTY RECORDER



09/30/2013 09:47 AM Fee: \$10.00

PAGE: 1 of 2

LOCATION NOTICE FOR LODE MINING CLAIM

NOTICE IS HEREBY GIVEN that the BB-18

_____ lode mining claim has been located

by GOLD BASIN MINING EXP LLC whose current mailing
address is 10923 VALLEROSA STREET
LAS VEGAS, NEVADA 89141

BLM
Date
Stamp
2013 OCT 28 PM 3:30
PHOENIX, ARIZONA
RECEIVED
BLM AT PHOENIX

The general course of this claim is NORTH-SOUTH and it is situated in MOHAVE

County, Arizona. This claim is 1500 feet in length and 600 feet in width. This claim runs
from the location monument on which this location notice is posted approximately 40 feet in a

NORTH direction to the NORTH end line and 1460 feet in a SOUTH direction to the
SOUTH end line. This claim is marked by six monuments, one at each corner and one at the center of each
end line of the claim.

The location monument on which this notice is posted is situated within Section 20, Township 29
N, Range 17 W, Gila Salt River Base and Meridian, Arizona and this claim encompasses portions
of the following quarter section (s), section (s), Township (s) and Range (s) NE 1/4, SE 1/4
SEC 20, T29 N, R17 W

Gila Salt River Base and Meridian, Arizona.

The locality of this claim with reference to some natural object or permanent monument and additional information
(if any) concerning its locality are as follows: EAST OF HUALAPAI
WASH

DATED AND POSTED on the ground this 28 day of SEPTEMBER, 2013.

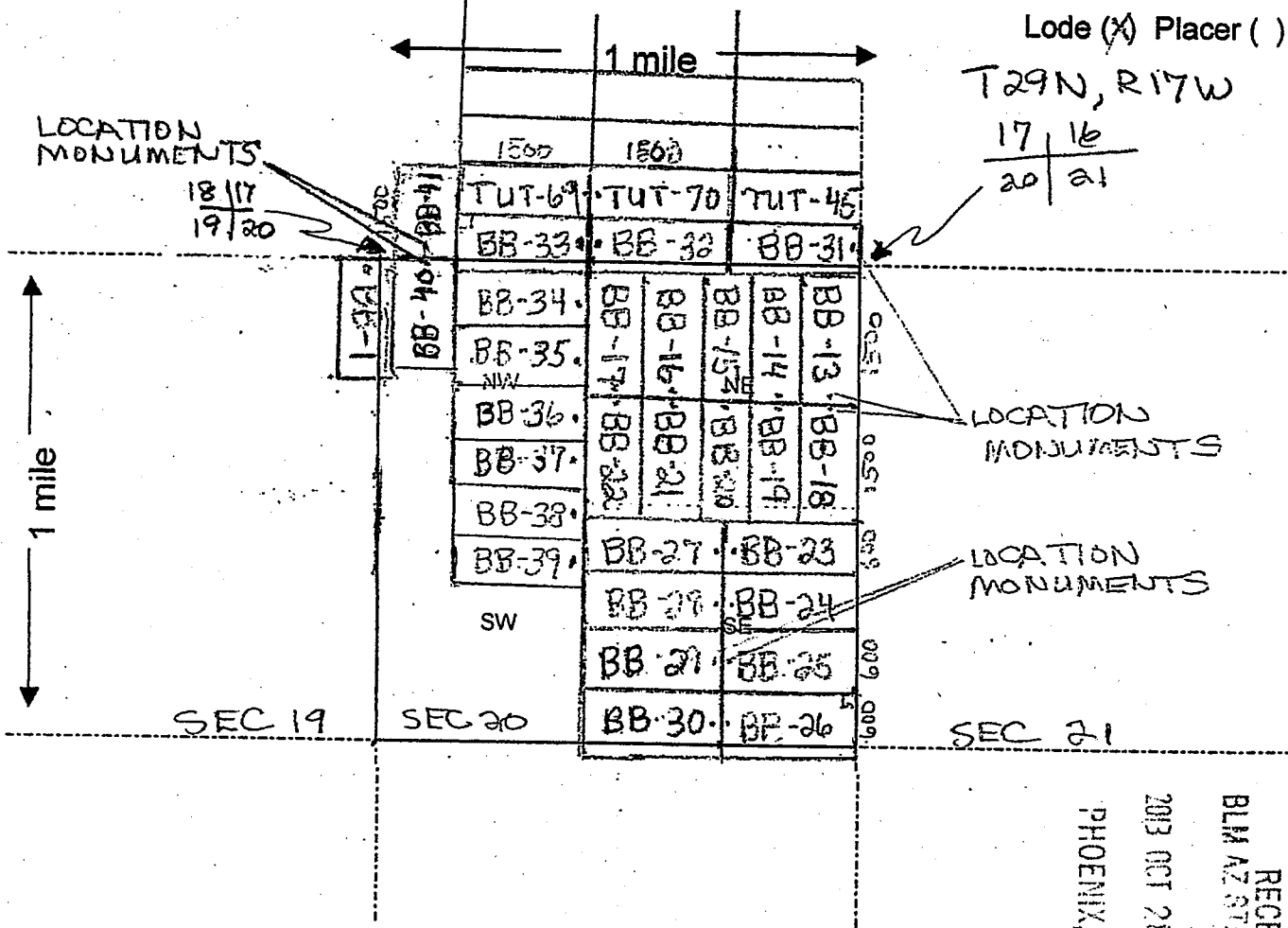
LOCATOR (s) Tom Arkosh

ENTERED
NOV 12 2013
BY: mm

Form MCF100
Revised July 2005

ALICR25256

MINING CLAIM MAP



Scale: 1" = 2000 feet



1. The above map depicts the BB-18 mining claim, which is located in Section (s) 20, Township 29 N, Range 17 W, Gila and Salt River Base and Meridian, MOHAVE County, Arizona.

2. The type of corner and location monuments used are as follows: 2" x 2" WOODEN POSTS 4 FEET HIGH

3. The bearings and distances in degrees and feet between claim corners are as depicted on the map.

RECEIVED
BLM AZ STATE OFFICE
PHOENIX, ARIZONA
2013 OCT 20 PM 3:30

AMC 425256

Form MCF100a
Revised July 2005

FEE# 2013050604

OFFICIAL RECORDS
OF MOHAVE COUNTY
CAROL MEIER,
COUNTY RECORDER



09/30/2013 09:47 AM Fee: \$10.00

PAGE: 1 of 2

LOCATION NOTICE FOR LODE MINING CLAIM

NOTICE IS HEREBY GIVEN that the BB-19

lode mining claim has been located

by GOLD BASIN MINING EXP LLC whose current mailing
address is 10923 VALLEROSA STREET
LAS VEGAS, NEVADA 89141

RECEIVED
BLM 47
PHOENIX, ARIZONA
OCT 29 PM 3:38

The general course of this claim is NORTH-SOUTH and it is situated in MOHAVE

County, Arizona. This claim is 1500 feet in length and 600 feet in width. This claim runs
from the location monument on which this location notice is posted approximately 40 feet in a

NORTH direction to the NORTH end line and 1460 feet in a SOUTH direction to the
SOUTH end line. This claim is marked by six monuments, one at each corner and one at the center of each
end line of the claim.

The location monument on which this notice is posted is situated within Section 20, Township 29
N, Range 17 W, Gila Salt River Base and Meridian, Arizona and this claim encompasses portions

of the following quarter section (s), section (s), Township (s) and Range (s) NE 1/4, SE 1/4
SEC 20, T29N, R17W

Gila Salt River Base and Meridian, Arizona.

The locality of this claim with reference to some natural object or permanent monument and additional information
(if any) concerning its locality are as follows: EAST OF HUALAPAI
WASH

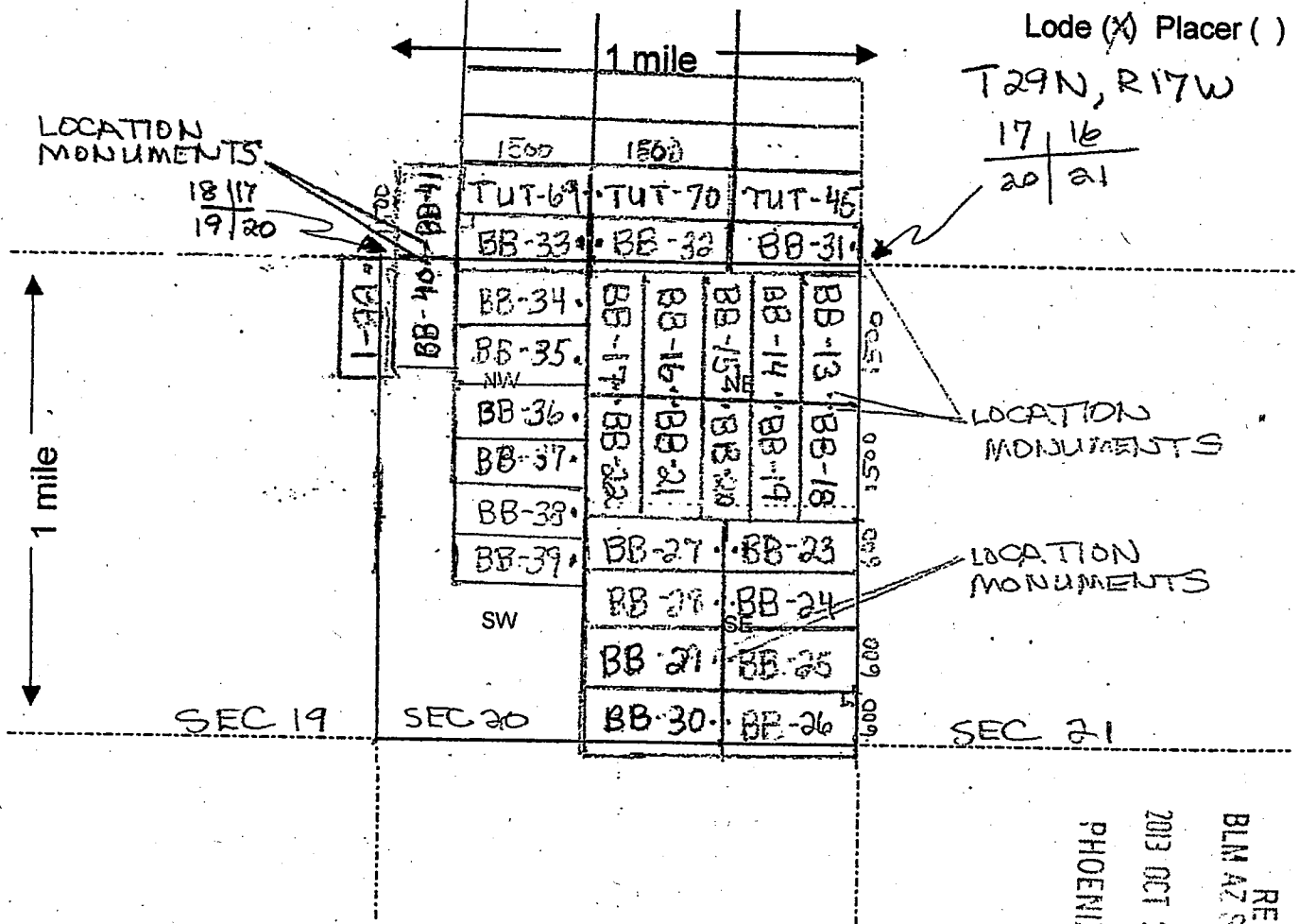
DATED AND POSTED on the ground this 28 day of SEPTEMBER, 2013.

LOCATOR (s) Tom Arkvosh

ENTERED
NOV 12 2013
BY: RM

Form MCF100
Revised July 2005

MINING CLAIM MAP



Lode (X) Placer ()
 T29N, R17W
 17 | 16
 20 | 21

Scale : 1" = 2000 feet

1. The above map depicts the BB-19 mining claim, which is located in Section (s) 20, Township 29 N, Range 17 W, Gila and Salt River Base and Meridian, MOHAVE County, Arizona.

2. The type of corner and location monuments used are as follows: 2" x 2" WOODEN POSTS 4 FEET HIGH

3. The bearings and distances in degrees and feet between claim corners are as depicted on the map.

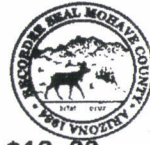
RECEIVED
 BLM AZ STATE OFFICE
 PHOENIX, ARIZONA
 2013 OCT 28 PM 3:33

AMC 0125257

Form MCF100a
 Revised July 2005

FEE# 2013050605

OFFICIAL RECORDS
OF MOHAVE COUNTY
CAROL MEIER,
COUNTY RECORDER



09/30/2013 09:47 AM Fee: \$10.00

PAGE: 1 of 2

RECEIVED
BLM AZ OFFICE

20

LOCATION NOTICE FOR LODE MINING CLAIM

NOTICE IS HEREBY GIVEN that the BB-20
_____ lode mining claim has been located

BLM
Date
Stamp

Rex

by GOLD BASIN MINING EXP LLC whose current mailing
address is 10923 VALLEROSA STREET
LAS VEGAS, NEVADA 89141

The general course of this claim is NORTH-SOUTH and it is situated in MOHAVE

County, Arizona. This claim is 1500 feet in length and 600 feet in width. This claim runs
from the location monument on which this location notice is posted approximately 40 feet in a

NORTH direction to the NORTH end line and 1460 feet in a SOUTH direction to the
SOUTH end line. This claim is marked by six monuments, one at each corner and one at the center of each
end line of the claim.

The location monument on which this notice is posted is situated within Section 20, Township 29
N, Range 17 W, Gila Salt River Base and Meridian, Arizona and this claim encompasses portions
of the following quarter section (s), section (s), Township (s) and Range (s) NE 1/4, SE 1/4
SEC 20, T29N, R17 W

Gila Salt River Base and Meridian, Arizona.

The locality of this claim with reference to some natural object or permanent monument and additional information
(if any) concerning its locality are as follows: EAST OF HUALAPAI
WASH

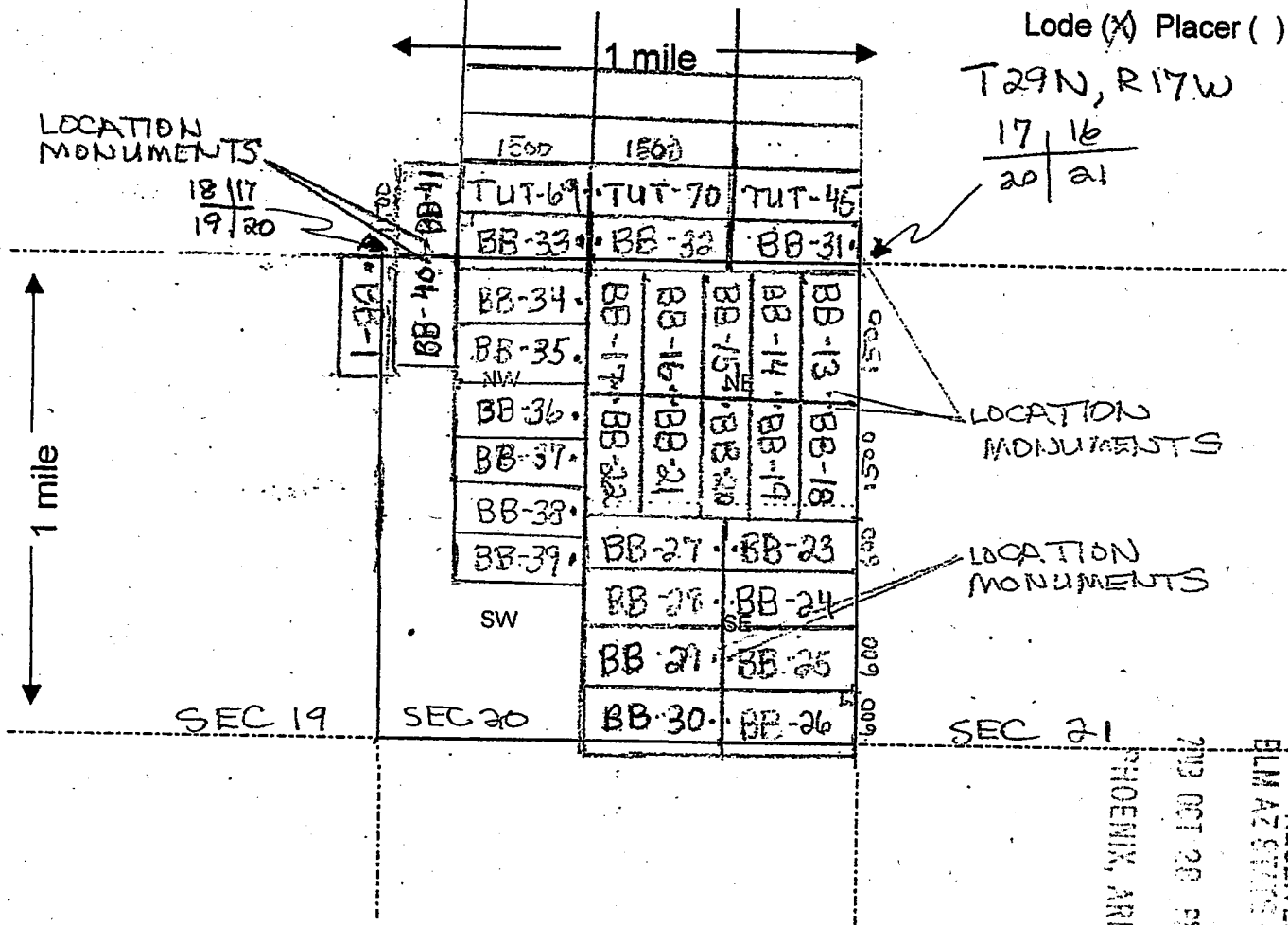
DATED AND POSTED on the ground this 28 day of SEPTEMBER, 2013.

LOCATOR (s) Tom Arboosh

INTEREST
NOV 12 2013
BY: Jm

Form MCF100
Revised July 2005

MINING CLAIM MAP



Lode (X) Placer ()
 T29N, R17W
 17 16
 20 21

LOCATION MONUMENTS
 18/17
 19/20

LOCATION MONUMENTS

LOCATION MONUMENTS

Scale: 1" = 2000 feet

1. The above map depicts the BB-20 mining claim, which is located in Section (s) 20, Township 29 N, Range 17 W, Gila and Salt River Base and Meridian, MOHAVE County, Arizona.

2. The type of corner and location monuments used are as follows: 2" x 2" WOODEN POSTS 4 FEET HIGH

3. The bearings and distances in degrees and feet between claim corners are as depicted on the map.

Form MCF100a
 Revised July 2005

This form is available from the Arizona Department of Mines & Mineral Resources and may be reproduced.

RECEIVED
 BLM AZ STATE OFFICE

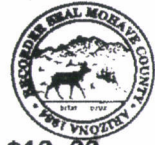
AN0425258

PHOENIX, ARIZONA

2003 OCT 28 PM 3:27

FEE# 2013050606

OFFICIAL RECORDS OF MOHAVE COUNTY CAROL MEIER, COUNTY RECORDER



09/30/2013 09:47 AM Fee: \$10.00

PAGE: 1 of 2

LOCATION NOTICE FOR LODE MINING CLAIM

NOTICE IS HEREBY GIVEN that the BB-21

lode mining claim has been located

by GOLD BASIN MINING EXP LLC whose current mailing address is 10923 VALLEROSA STREET LAS VEGAS, NEVADA 89141

BLM Date Stamp PHOENIX, ARIZONA

RECEIVED BLM AT PHOENIX OFFICE

The general course of this claim is NORTH-SOUTH and it is situated in MOHAVE

County, Arizona. This claim is 1500 feet in length and 600 feet in width. This claim runs from the location monument on which this location notice is posted approximately 40 feet in a

NORTH direction to the NORTH end line and 1460 feet in a SOUTH direction to the SOUTH end line. This claim is marked by six monuments, one at each corner and one at the center of each end line of the claim.

The location monument on which this notice is posted is situated within Section 20, Township 29 N, Range 17 W, Gila Salt River Base and Meridian, Arizona and this claim encompasses portions

of the following quarter section (s), section (s), Township (s) and Range (s) NE 1/4, SE 1/4 SEC 20, T29N, R17W

Gila Salt River Base and Meridian, Arizona.

The locality of this claim with reference to some natural object or permanent monument and additional information (if any) concerning its locality are as follows: EAST OF HUALAPAI WASH

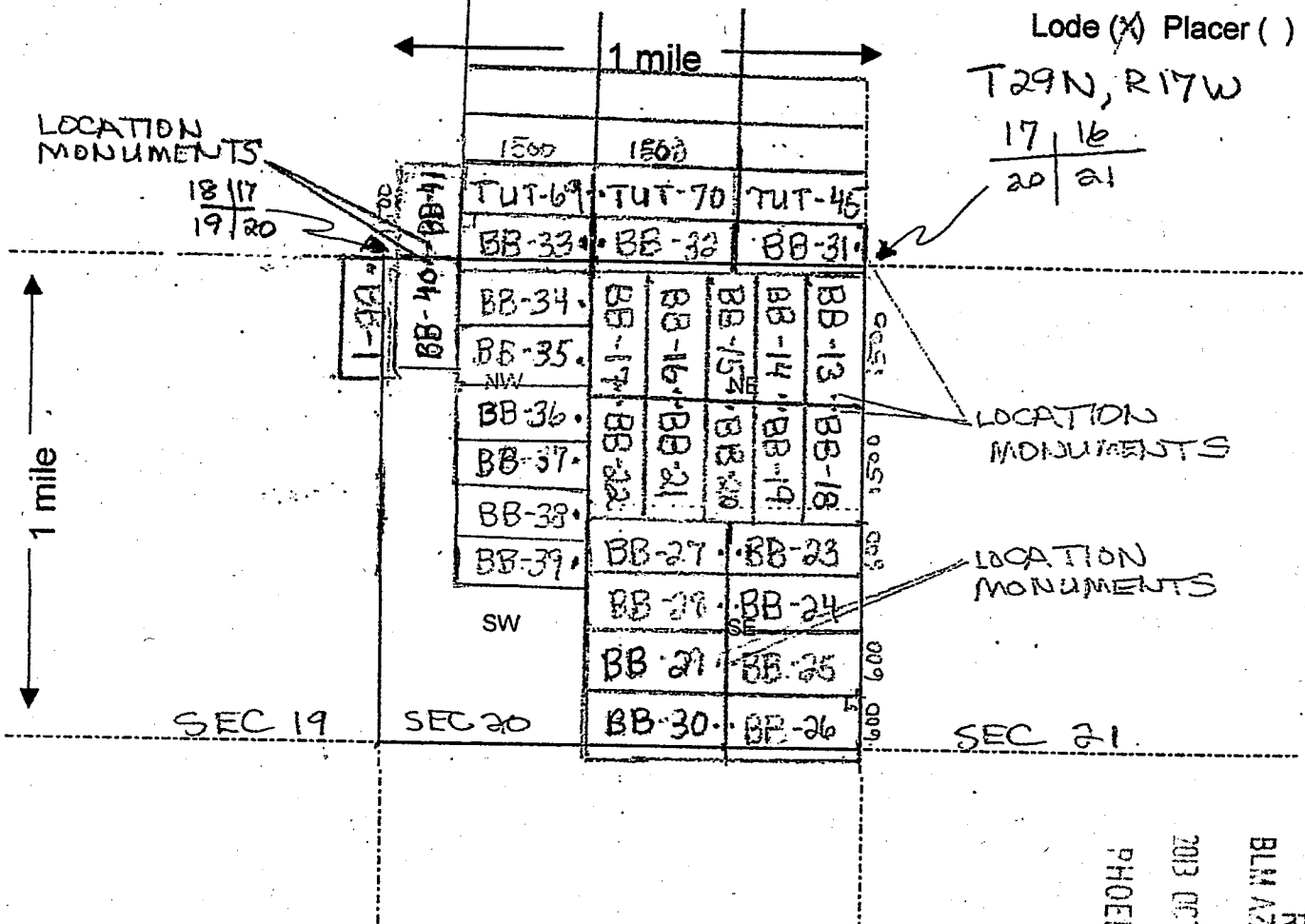
DATED AND POSTED on the ground this 28 day of SEPTEMBER, 2013.

LOCATOR (s) Tom Arboosh

ENTERED NOV 12 2013 BY: [Signature]

Form MCF100 Revised July 2005

MINING CLAIM MAP



Scale: 1" = 2000 feet



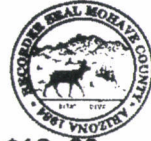
1. The above map depicts the BB-21 mining claim, which is located in Section (s) 20, Township 29 N, Range 17 W, Gila and Salt River Base and Meridian, MOHAVE County, Arizona.
2. The type of corner and location monuments used are as follows: 2" x 2" WOODEN POSTS 4 FEET HIGH
3. The bearings and distances in degrees and feet between claim corners are as depicted on the map.

RECEIVED
 BLM AZ STATE OFFICE
 PHOENIX, ARIZONA
 2013 OCT 20 11:38
 ANCH 25259

Form MCF100a
 Revised July 2005

FEE# 2013050607

OFFICIAL RECORDS OF MOHAVE COUNTY CAROL MEIER, COUNTY RECORDER



09/30/2013 09:47 AM Fee: \$10.00

PAGE: 1 of 2

LOCATION NOTICE FOR LODE MINING CLAIM

NOTICE IS HEREBY GIVEN that the BB-22

lode mining claim has been located

by GOLD BASIN MINING EXP LLC whose current mailing address is 10923 VALLEROSA STREET LAS VEGAS, NEVADA 89141

BLM Date Stamp

RECEIVED
BLM
NOV 12 2013
PHOENIX, ARIZONA

RECEIVED
BLM

The general course of this claim is NORTH-SOUTH and it is situated in MOHAVE County, Arizona. This claim is 1500 feet in length and 600 feet in width. This claim runs from the location monument on which this location notice is posted approximately 40 feet in a NORTH direction to the NORTH end line and 1460 feet in a SOUTH direction to the SOUTH end line. This claim is marked by six monuments, one at each corner and one at the center of each end line of the claim.

The location monument on which this notice is posted is situated within Section 20, Township 29 N, Range 17 W, Gila Salt River Base and Meridian, Arizona and this claim encompasses portions of the following quarter section (s), section (s), Township (s) and Range (s) NE 1/4, NW 1/4, SE 1/4, SW 1/4 SEC 20, T29N, R17W Gila Salt River Base and Meridian, Arizona.

The locality of this claim with reference to some natural object or permanent monument and additional information (if any) concerning its locality are as follows: EAST OF HUALAPAI WASH

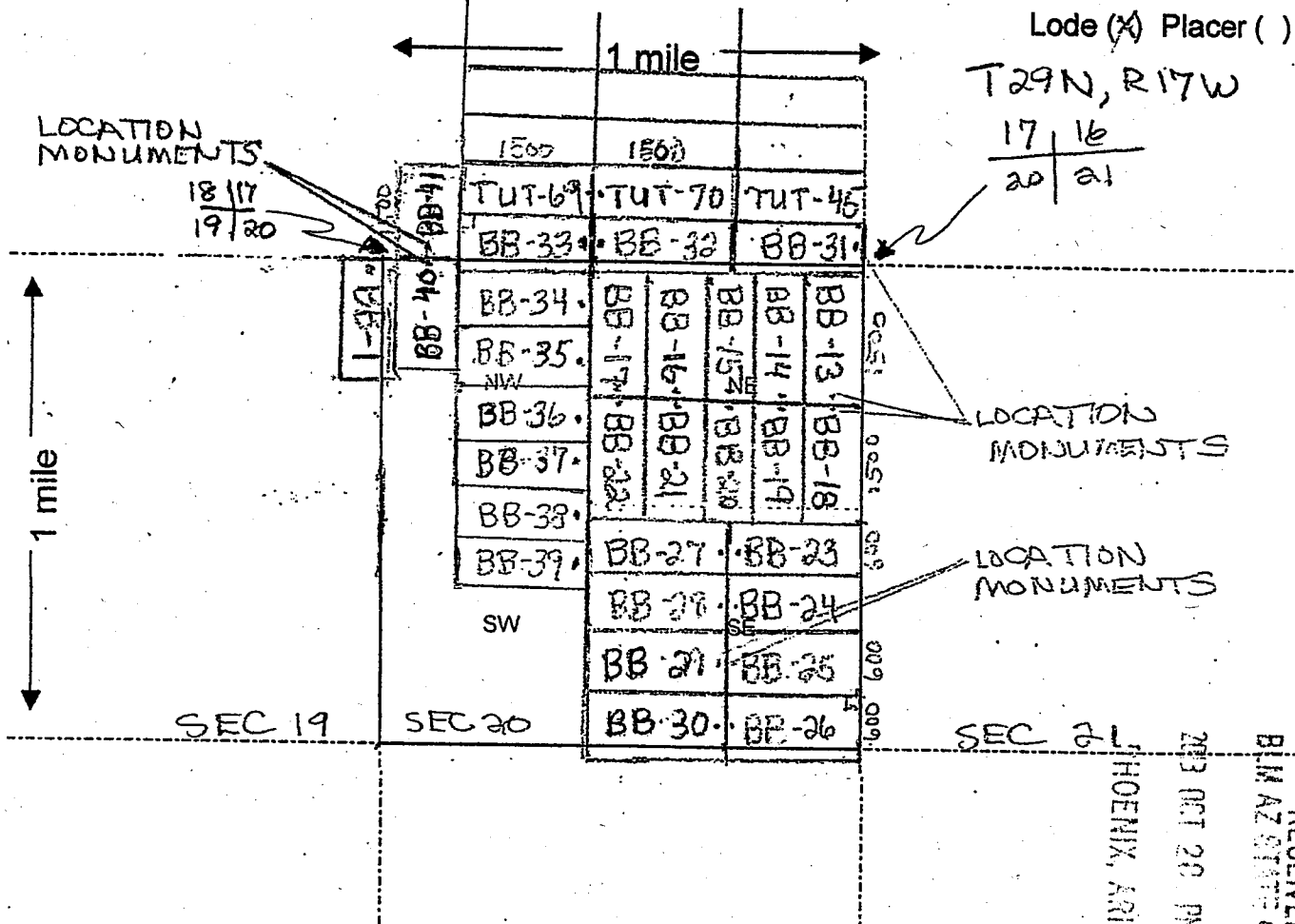
DATED AND POSTED on the ground this 28 day of SEPTEMBER, 2013.

LOCATOR (s) Tom Arbosh

ENTERED
NOV 12 2013
BY: 2m

Form MCF100 Revised July 2005

MINING CLAIM MAP



Lode (X) Placer (O)
 T29N, R17W
 17 16
 20 21

Scale: 1" = 2000 feet



1. The above map depicts the BB-22 mining claim, which is located in Section (s) 20, Township 29 N, Range 17 W, Gila and Salt River Base and Meridian, MOHAVE County, Arizona.

2. The type of corner and location monuments used are as follows: 2" x 2" WOODEN POSTS 4 FEET HIGH

3. The bearings and distances in degrees and feet between claim corners are as depicted on the map.

RECEIVED
 BLM AZ STATE OFFICE
 2003 OCT 20 PM 3:39

ANCM 25260

Form MCF100a
 Revised July 2005

FEE# 2013050608

OFFICIAL RECORDS
OF MOHAVE COUNTY
CAROL MEIER,
COUNTY RECORDER



09/30/2013 09:47 AM Fee: \$10.00

PAGE: 1 of 2

LOCATION NOTICE FOR LODE MINING CLAIM

NOTICE IS HEREBY GIVEN that the BB-23

lode mining claim has been located

by GOLD BASIN MINING EXP LLC whose current mailing

address is 10923 VALLEROSA ST

LAS VEGAS, NV 89141

BLM
Date
Stamp
2013 OCT 28 PM 3:29
PHOENIX, ARIZONA

RECEIVED
BLM

Ret

The general course of this claim is EAST-WEST and it is situated in MOHAVE

County, Arizona. This claim is 1500 feet in length and 600 feet in width. This claim runs

from the location monument on which this location notice is posted approximately 40 feet in a

WEST direction to the WEST end line and 1460 feet in a EAST direction to the

EAST end line. This claim is marked by six monuments, one at each corner and one at the center of each end line of the claim.

The location monument on which this notice is posted is situated within Section 20, Township 29

N, Range 17 W, Gila Salt River Base and Meridian, Arizona and this claim encompasses portions

of the following quarter section (s), section (s), Township (s) and Range (s) SE 1/4 SEC 20,

T29N, R17W

Gila Salt River Base and Meridian, Arizona.

The locality of this claim with reference to some natural object or permanent monument and additional information

(if any) concerning its locality are as follows: EAST OF HUALAPAI

WASH

DATED AND POSTED on the ground this 29 day of SEPTEMBER, 2013

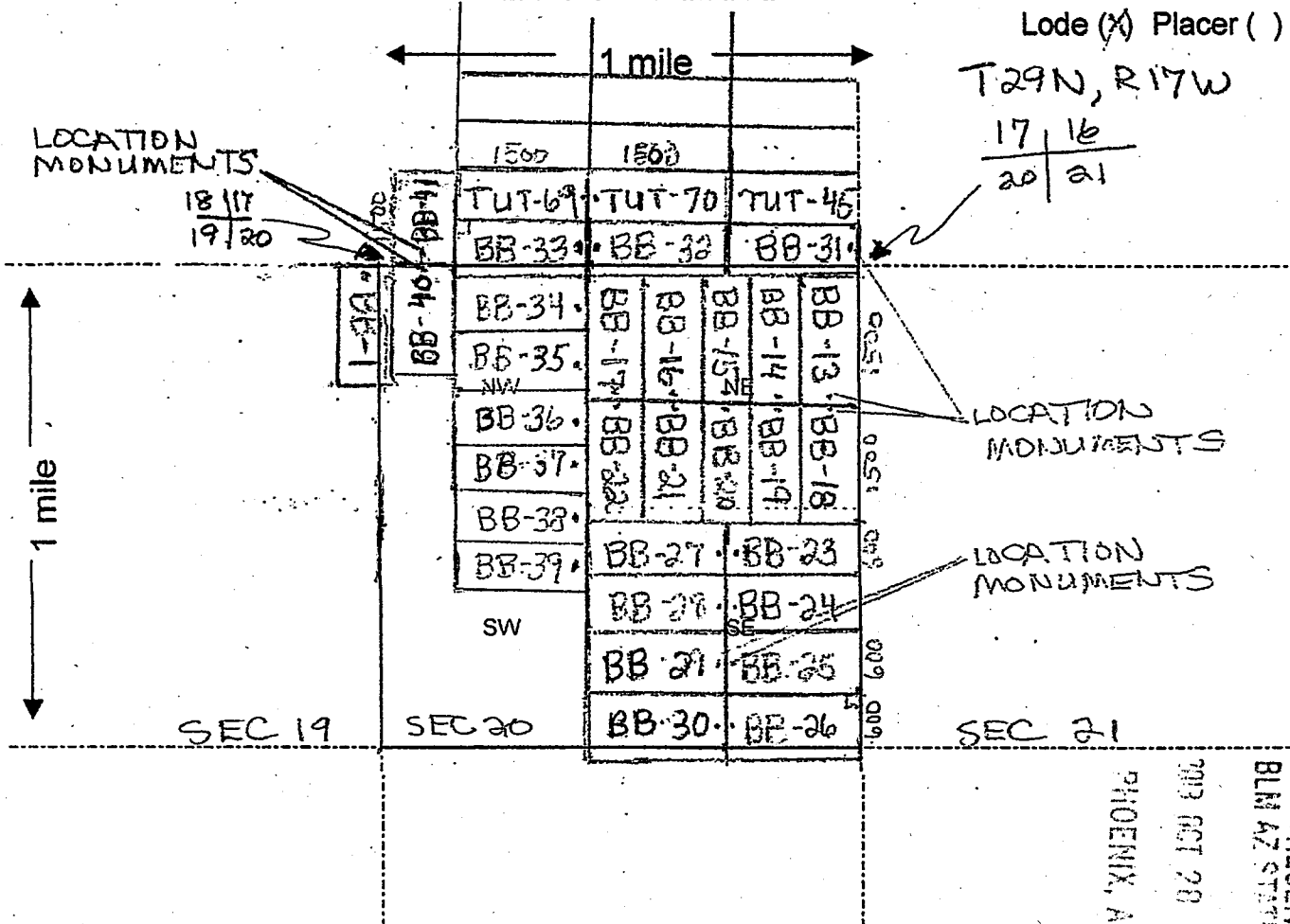
LOCATOR (s) Tom Arboosh

ENTERED
NOV 12 2013

Form MCF100
Revised July 2005

110925261

MINING CLAIM MAP



Lode (X) Placer ()

T29N, R17W

17 | 16
20 | 21

LOCATION MONUMENTS
18 | 17
19 | 20

LOCATION MONUMENTS

LOCATION MONUMENTS

Scale: 1" = 2000 feet



1. The above map depicts the BB-23 mining claim, which is located in Section (s) 20, Township 29 N, Range 17 W, Gila and Salt River Base and Meridian, MOHAVE County, Arizona.

2. The type of corner and location monuments used are as follows: 2" x 2" WOODEN POSTS 4 FEET HIGH

3. The bearings and distances in degrees and feet between claim corners are as depicted on the map.

Form MCF100a
Revised July 2005

This form is available from the Arizona Department of Mines & Mineral Resources and may be reproduced.

RECEIVED
BLM AZ STATE OFFICE
2003 OCT 28 PM 3:29

ANCO 25261

PHOENIX, ARIZONA

FEE# 2013050609

OFFICIAL RECORDS
OF MOHAVE COUNTY
CAROL MEIER,
COUNTY RECORDER



09/30/2013 09:47 AM Fee: \$10.00

PAGE: 1 of 2

LOCATION NOTICE FOR LODE MINING CLAIM

NOTICE IS HEREBY GIVEN that the BB-24

lode mining claim has been located

by GOLD BASIN MINING EXP LLC whose current mailing

address is 10923 Vallerosa Street

LAS VEGAS, NV 89141

BLM
Date
Stamp
2013 OCT 29 PM 3:32
PHOENIX, ARIZONA
RECEIVED
BLM AZ STATE

The general course of this claim is EAST-WEST and it is situated in MOHAVE

County, Arizona. This claim is 1500 feet in length and 600 feet in width. This claim runs

from the location monument on which this location notice is posted approximately 40 feet in a

WEST direction to the WEST end line and 1460 feet in a EAST direction to the

EAST end line. This claim is marked by six monuments, one at each corner and one at the center of each end line of the claim.

The location monument on which this notice is posted is situated within Section 20, Township 29

N, Range 17 W, Gila Salt River Base and Meridian, Arizona and this claim encompasses portions

of the following quarter section (s), section (s), Township (s) and Range (s) SE 1/4 SEC 20,

T29N, R17 W

Gila Salt River Base and Meridian, Arizona.

The locality of this claim with reference to some natural object or permanent monument and additional information

(if any) concerning its locality are as follows: EAST OF HUAPAI

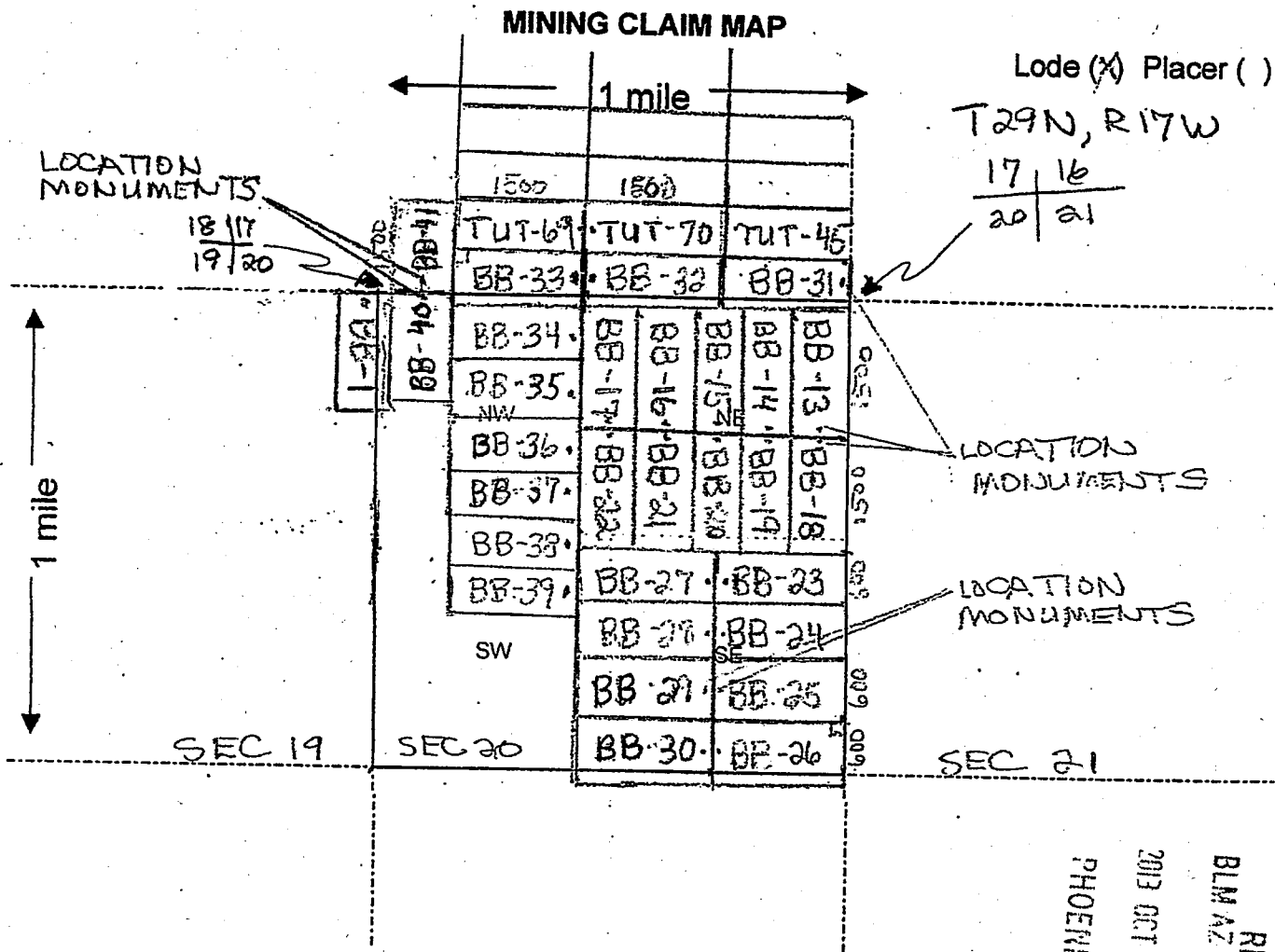
WASH

DATED AND POSTED on the ground this 29 day of SEPTEMBER, 2013

LOCATOR (s) Tom Arkosh

ENTERED
NOV 12 2013
BY: Jm

Form MCF100
Revised July 2005



RECEIVED
 BLM AZ STATE OFFICE
 2013 OCT 28 PM 3:09
 PHOENIX, ARIZONA

A110425262

1. The above map depicts the BB-24 mining claim, which is located in Section (s) 20, Township 29 N, Range 17 W, Gila and Salt River Base and Meridian, MOHAVE County, Arizona.
2. The type of corner and location monuments used are as follows: 2" x 2" WOODEN POSTS 4 FEET HIGH
3. The bearings and distances in degrees and feet between claim corners are as depicted on the map.

Form MCF100a
Revised July 2005

FEE# 2013050610

OFFICIAL RECORDS
OF MOHAVE COUNTY
CAROL MEIER,
COUNTY RECORDER



09/30/2013 09:47 AM Fee: \$10.00

PAGE: 1 of 2

LOCATION NOTICE FOR LODE MINING CLAIM

NOTICE IS HEREBY GIVEN that the BB-25

lode mining claim has been located

by GOLD BASIN MINING EXP LLC whose current mailing

address is 10923 Vallerosa street

Las Vegas, NV 8914

BLM
Date
Stamp

RECEIVED
BLM AZ REC'D

The general course of this claim is EAST-WEST and it is situated in MOHAVE

County, Arizona. This claim is 1500 feet in length and 600 feet in width. This claim runs

from the location monument on which this location notice is posted approximately 40 feet in a

WEST direction to the WEST end line and 1460 feet in a EAST direction to the

EAST end line. This claim is marked by six monuments, one at each corner and one at the center of each end line of the claim.

The location monument on which this notice is posted is situated within Section 20, Township 29

N, Range 17 W, Gila Salt River Base and Meridian, Arizona and this claim encompasses portions

of the following quarter section (s), section (s), Township (s) and Range (s) SE 1/4 SEC 20,

T29N, R17 W

Gila Salt River Base and Meridian, Arizona.

The locality of this claim with reference to some natural object or permanent monument and additional information

(if any) concerning its locality are as follows: EAST OF HUAPAI

WASH

DATED AND POSTED on the ground this 29 day of SEPTEMBER, 2013

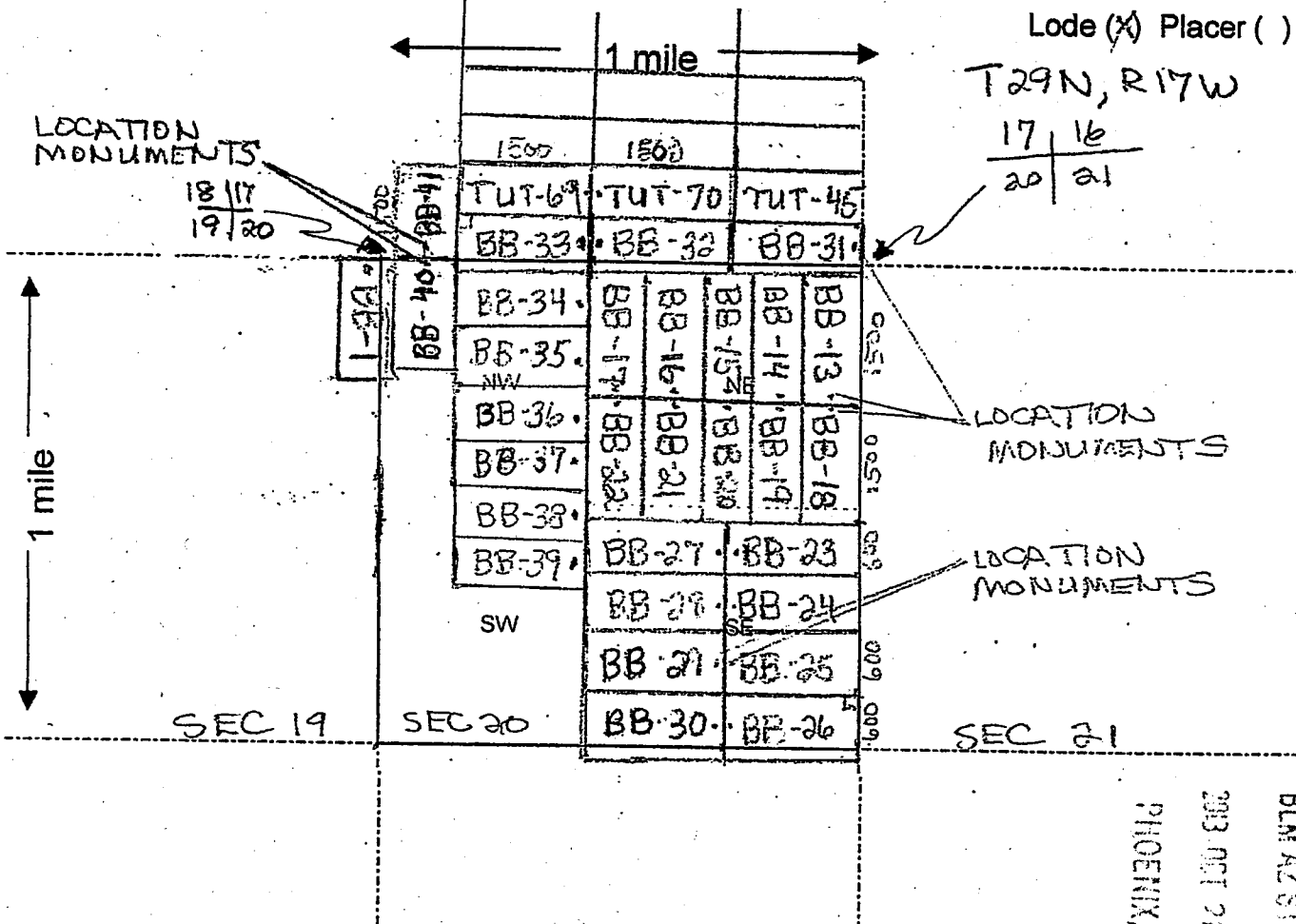
LOCATOR (s) Tom Arboosh

ENTERED
NOV 12 2013

Form MCF100
Revised July 2005

AM0925263

MINING CLAIM MAP



AHC425263

RECEIVED
BLM AZ STATE OFFICE

2003 OCT 22 PM 2:30
PHOENIX, ARIZONA

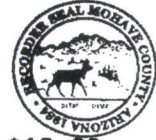
Scale: 1" = 2000 feet

- The above map depicts the BB-25 mining claim, which is located in Section (s) 20, Township 29 N, Range 17 W, Gila and Salt River Base and Meridian, MOHAVE County, Arizona.
- The type of corner and location monuments used are as follows: 2" x 2" WOODEN POSTS 4 FEET HIGH
- The bearings and distances in degrees and feet between claim corners are as depicted on the map.

Form MCF100a
Revised July 2005

FEE# 2013050611

OFFICIAL RECORDS OF MOHAVE COUNTY CAROL MEIER, COUNTY RECORDER



09/30/2013 09:47 AM Fee: \$10.00

PAGE: 1 of 2

LOCATION NOTICE FOR LODE MINING CLAIM

NOTICE IS HEREBY GIVEN that the BB-26

lode mining claim has been located

by GOLD BASIN MINING EXPAC whose current mailing

address is 10923 VALLERUSA STREET LAS VEGAS, NV 89141

BLM Date Stamp

RECEIVED

The general course of this claim is EAST-WEST and it is situated in MOHAVE

County, Arizona. This claim is 1500 feet in length and 600 feet in width. This claim runs from the location monument on which this location notice is posted approximately 40 feet in a

WEST direction to the WEST end line and 1460 feet in a EAST direction to the EAST end line. This claim is marked by six monuments, one at each corner and one at the center of each end line of the claim.

The location monument on which this notice is posted is situated within Section 20, Township 29 N, Range 17 W, Gila Salt River Base and Meridian, Arizona and this claim encompasses portions of the following quarter section (s), section (s), Township (s) and Range (s) SE 1/4 SEC 20, NE 1/4 SEC 29, T29N, R17W

Gila Salt River Base and Meridian, Arizona.

The locality of this claim with reference to some natural object or permanent monument and additional information (if any) concerning its locality are as follows: EAST OF HUALAPAI WASH

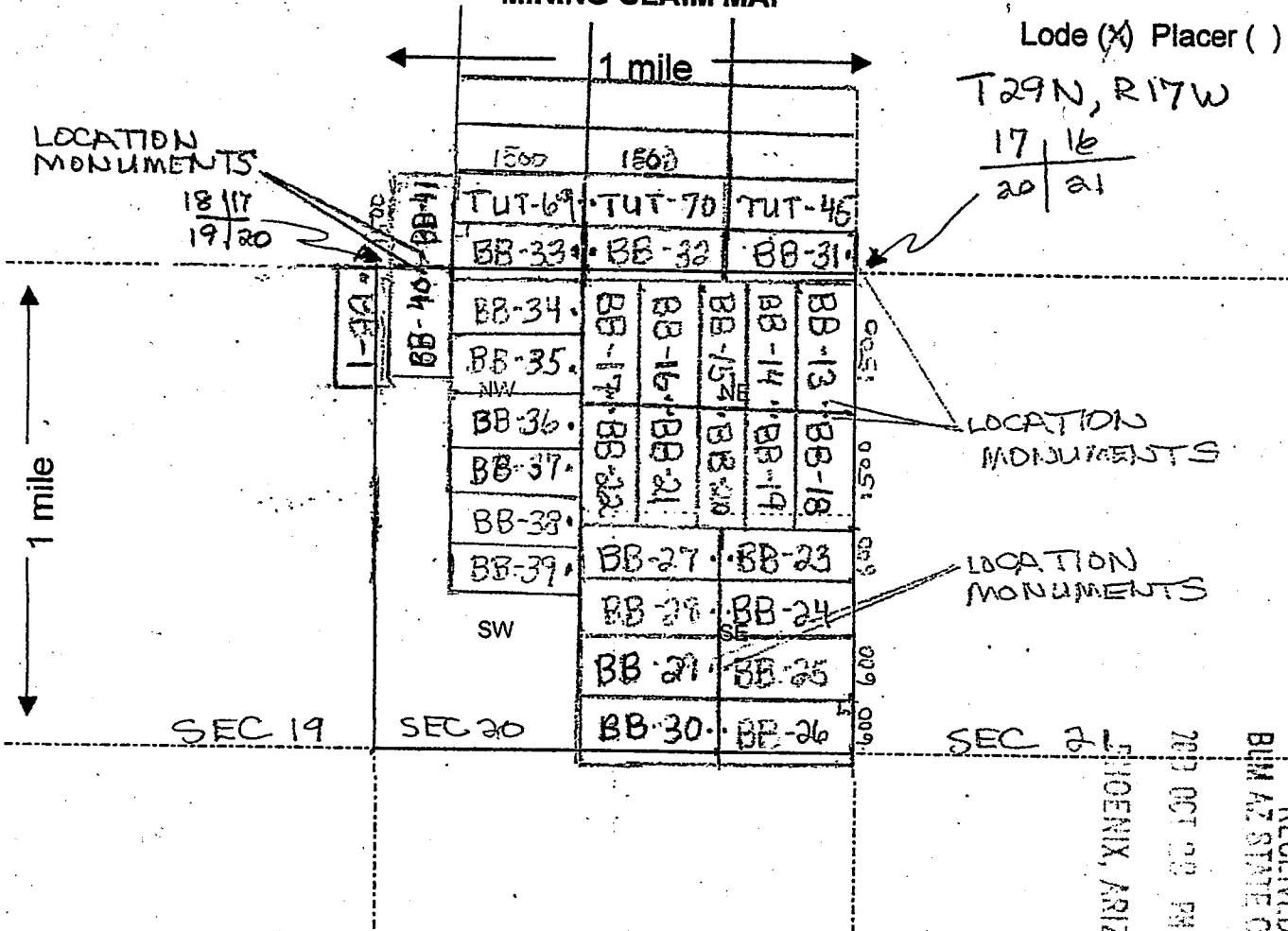
DATED AND POSTED on the ground this 29 day of SEPTEMBER, 2013

LOCATOR (s) Tom Arboosh

ENTERED NOV 12 2013 BY: jm

Form MCF100 Revised July 2005

MINING CLAIM MAP



Scale: 1" = 2000 feet



1. The above map depicts the BB-26 mining claim, which is located in Section (s) 20, Township 29 N, Range 17 W, Gila and Salt River Base and Meridian, MOHAVE County, Arizona.

2. The type of corner and location monuments used are as follows: 2" x 2" WOODEN POSTS 4 FEET HIGH

3. The bearings and distances in degrees and feet between claim corners are as depicted on the map.

Form MCF100a
Revised July 2005

This form is available from the Arizona Department of Mines & Mineral Resources and may be reproduced.

RECEIVED
BIM AZ STATE OFFICE

AMC 425264

2007 OCT 28 PM 3:40

FEE# 2013050612

OFFICIAL RECORDS OF MOHAVE COUNTY CAROL MEIER, COUNTY RECORDER



09/30/2013 09:47 AM Fee: \$10.00

PAGE: 1 of 2

LOCATION NOTICE FOR LODE MINING CLAIM

NOTICE IS HEREBY GIVEN that the BB-27

lode mining claim has been located

by GOLD BASIN MINING EXP LLC whose current mailing address is 10923 VALEROSA STREET LAS VEGAS, NEVADA 89141

BLM Date Stamp
2013 OCT 29 PM 2:11
PHOENIX, ARIZONA

RECEIVED
BLM AT PHOENIX, ARIZONA

The general course of this claim is EAST - WEST and it is situated in MOHAVE County, Arizona. This claim is 1500 feet in length and 600 feet in width. This claim runs from the location monument on which this location notice is posted approximately 40 feet in a EAST direction to the EAST end line and 1460 feet in a WEST direction to the WEST end line. This claim is marked by six monuments, one at each corner and one at the center of each end line of the claim.

The location monument on which this notice is posted is situated within Section 20, Township 29 N, Range 17 W, Gila Salt River Base and Meridian, Arizona and this claim encompasses portions of the following quarter section (s), section (s), Township (s) and Range (s) SE 1/4 SEC 20 SW 1/4 SEC 20, T29N, R17W Gila Salt River Base and Meridian, Arizona.

The locality of this claim with reference to some natural object or permanent monument and additional information (if any) concerning its locality are as follows: EAST OF HUALAPAI WASH

DATED AND POSTED on the ground this 29 day of SEPTEMBER 2013

LOCATOR (s) Tom Arboosh

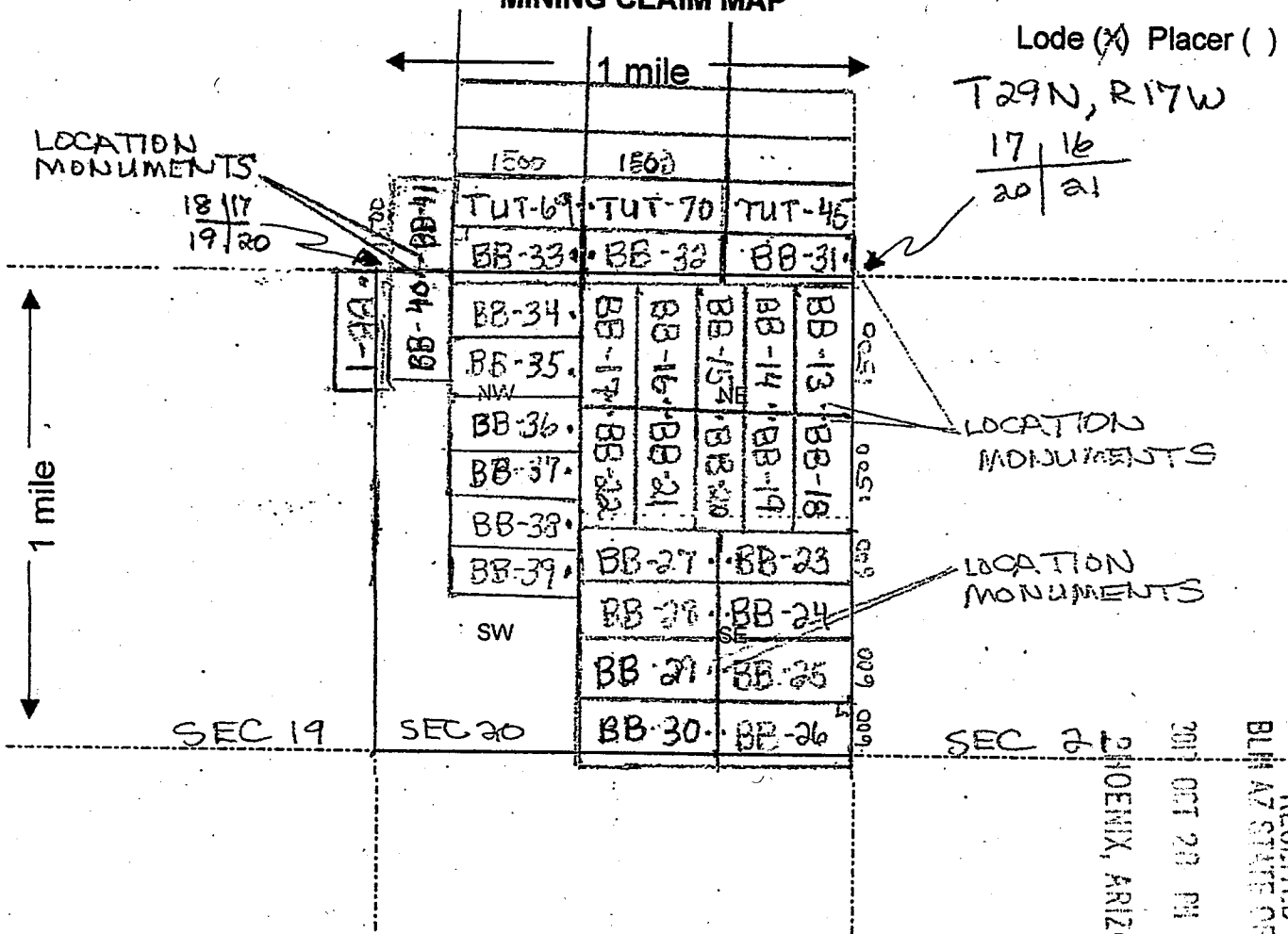
ENTERED
NOV 12 2013
BY: mm

Form MCF100 Revised July 2005

ATC 825265

Rex

MINING CLAIM MAP



Scale : 1" = 2000 feet

1. The above map depicts the BB-27 mining claim, which is located in Section (s) 20, Township 29 N, Range 17 W, Gila and Salt River Base and Meridian, MOHAVE County, Arizona.
2. The type of corner and location monuments used are as follows: 2" x 2" WOODEN POSTS 4 FEET HIGH
3. The bearings and distances in degrees and feet between claim corners are as depicted on the map.

Form MCF100a
Revised July 2005

This form is available from the Arizona Department of Mines & Mineral Resources and may be reproduced.

AMC 425265

8

FEE# 2013050613

OFFICIAL RECORDS OF MOHAVE COUNTY CAROL MEIER, COUNTY RECORDER



09/30/2013 09:47 AM Fee: \$10.00

PAGE: 1 of 2

LOCATION NOTICE FOR LODE MINING CLAIM

NOTICE IS HEREBY GIVEN that the BB-28

_____ lode mining claim has been located

by GOLD BASIN MINING EXP LLC whose current mailing

address is 10923 VALEROSA STREET

LAS VEGAS, NEVADA 89141

BLM Date Stamp
2013 OCT 29 11 31 AM
PHOENIX, ARIZONA

RECEIVED
BLM AZ STATE OFFICE

The general course of this claim is EAST - WEST and it is situated in MOHAVE

County, Arizona. This claim is 1500 feet in length and 600 feet in width. This claim runs

from the location monument on which this location notice is posted approximately 40 feet in a

EAST direction to the EAST end line and 1460 feet in a WEST direction to the

WEST end line. This claim is marked by six monuments, one at each corner and one at the center of each end line of the claim.

The location monument on which this notice is posted is situated within Section 20, Township 29

N, Range 17 W, Gila Salt River Base and Meridian, Arizona and this claim encompasses portions

of the following quarter section (s), section (s), Township (s) and Range (s) SE 1/4, SW 1/4

SEC 20, T29N, R17W

Gila Salt River Base and Meridian, Arizona.

The locality of this claim with reference to some natural object or permanent monument and additional information

(if any) concerning its locality are as follows: EAST OF HUALAPAI

WASH

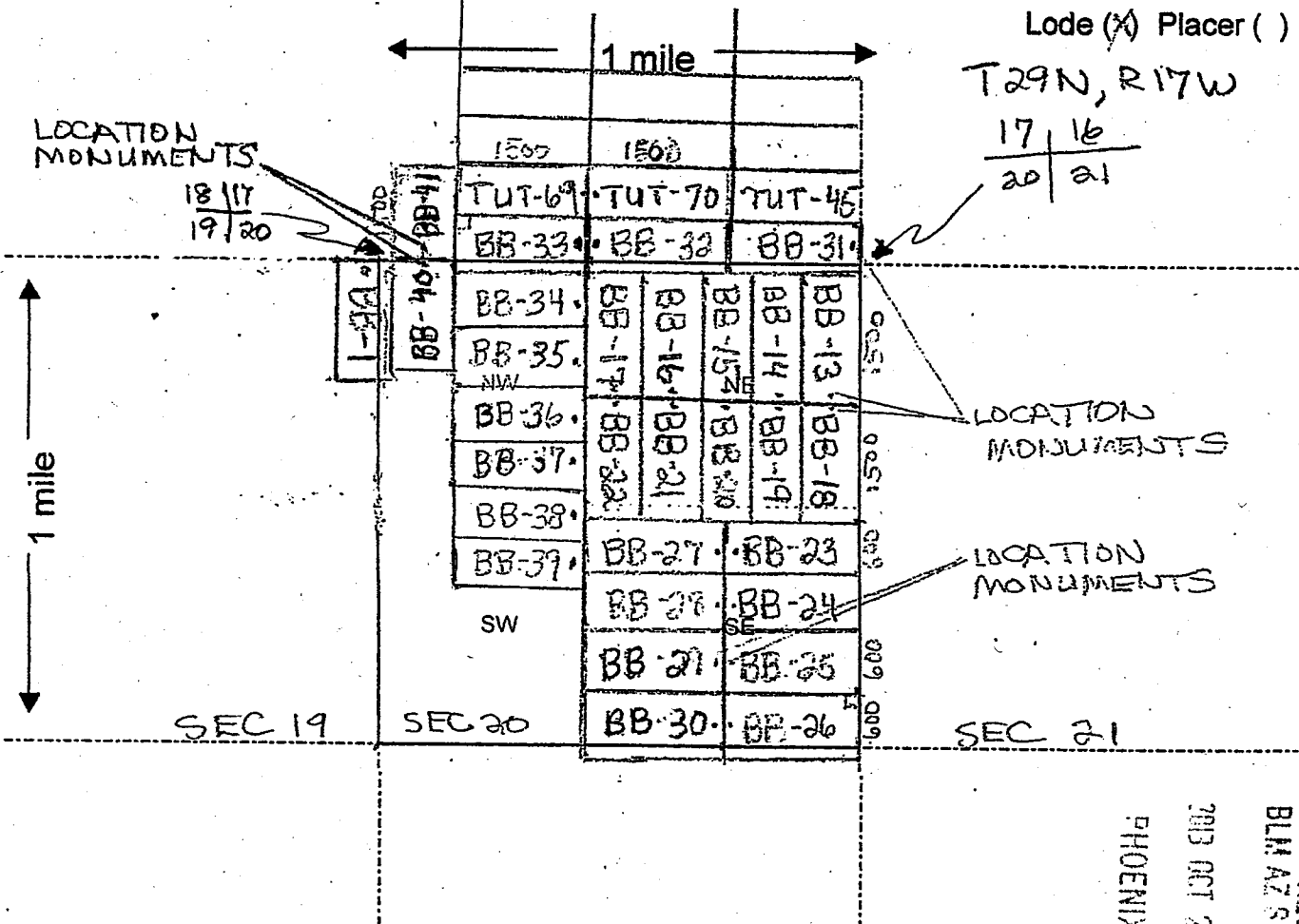
DATED AND POSTED on the ground this 29 day of SEPTEMBER 13

LOCATOR (s) Tom Arboosh

ENTERED
NOV 12 2013
BY: RM

Form MCF100
Revised July 2005

MINING CLAIM MAP



Lode (X) Placer ()

T29N, R17W
17 | 16
20 | 21

Scale: 1" = 2000 feet

1. The above map depicts the BB-28 mining claim, which is located in Section (s) 20, Township 29 N, Range 17 W, Gila and Salt River Base and Meridian, MOHAVE County, Arizona.

2. The type of corner and location monuments used are as follows: 2" x 2" WOODEN POSTS 4 FEET HIGH

3. The bearings and distances in degrees and feet between claim corners are as depicted on the map.

RECEIVED
BLM AZ STATE OFFICE
PHOENIX, ARIZONA
2003 OCT 28 PM 3:41

AN0425266

Form MCF100a
Revised July 2005

FEE# 2013050614

OFFICIAL RECORDS OF MOHAVE COUNTY CAROL MEIER, COUNTY RECORDER



09/30/2013 09:47 AM Fee: \$10.00

PAGE: 1 of 2

LOCATION NOTICE FOR LODE MINING CLAIM

NOTICE IS HEREBY GIVEN that the BB-29

lode mining claim has been located

by GOLD BASIN MINING EXPLOR whose current mailing address is 10923 VALEROSA STREET LAS VEGAS, NEVADA 89141

BLM Date Stamp
PHOENIX, ARIZONA
2013 OCT 20 PM 3:41

RECEIVED
BLM AT PHOENIX OFFICE

The general course of this claim is EAST - WEST and it is situated in MOHAVE County, Arizona. This claim is 1500 feet in length and 600 feet in width. This claim runs from the location monument on which this location notice is posted approximately 40 feet in a EAST direction to the EAST end line and 1460 feet in a WEST direction to the WEST end line. This claim is marked by six monuments, one at each corner and one at the center of each end line of the claim.

The location monument on which this notice is posted is situated within Section 20, Township 29 N, Range 17 W, Gila Salt River Base and Meridian, Arizona and this claim encompasses portions of the following quarter section (s), section (s), Township (s) and Range (s) SE 1/4, SW 1/4 SEC 20, T29N, R17W

Gila Salt River Base and Meridian, Arizona.

The locality of this claim with reference to some natural object or permanent monument and additional information (if any) concerning its locality are as follows: EAST OF HUALAPAI WASH

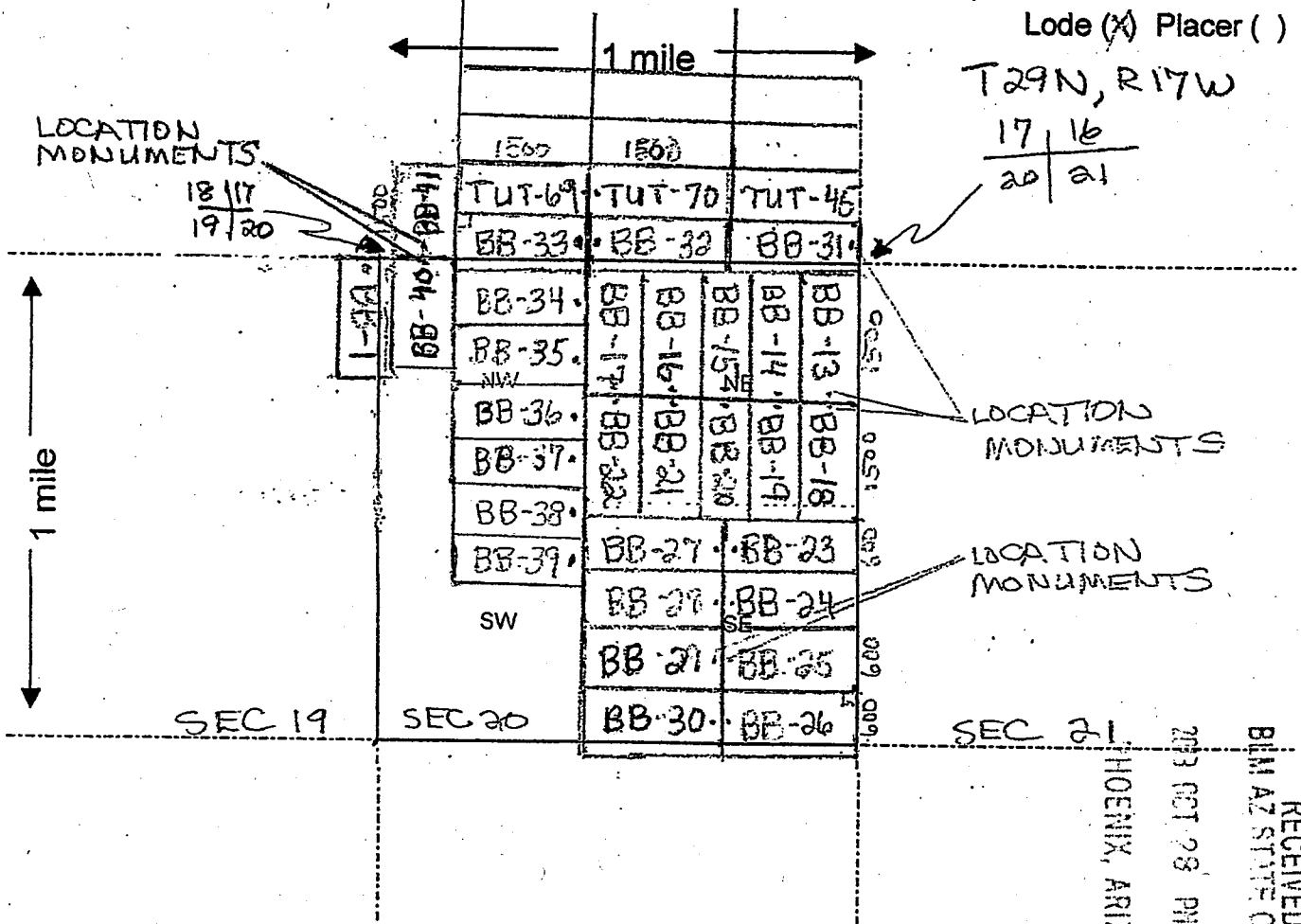
DATED AND POSTED on the ground this 29 day of SEPTEMBER 13

LOCATOR (s) Tom Arkoosh

ENTERED
NOV 12 2013

Form MCF100 Revised July 2005

MINING CLAIM MAP



Lode (X) Placer ()
 T29N, R17W
 17 | 16
 20 | 21

- Scale : 1" = 2000 feet
- The above map depicts the BB-29 mining claim, which is located in Section (s) 20, Township 29 N, Range 17 W, Gila and Salt River Base and Meridian, MOHAVE County, Arizona.
 - The type of corner and location monuments used are as follows: 2" x 2" WOODEN POSTS 4 FEET HIGH
 - The bearings and distances in degrees and feet between claim corners are as depicted on the map.

Form MCF100a
 Revised July 2005

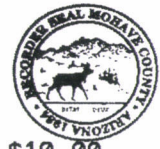
This form is available from the Arizona Department of Mines & Mineral Resources and may be reproduced.

RECEIVED
 BLM AZ STATE OFFICE
 2003 OCT 28 PM 3:40
 AHC425267

2

FEE# 2013050615

OFFICIAL RECORDS OF MOHAVE COUNTY CAROL MEIER, COUNTY RECORDER



09/30/2013 09:47 AM Fee: \$10.00

PAGE: 1 of 2

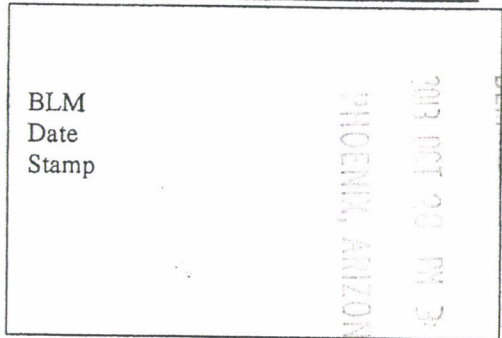
LOCATION NOTICE FOR LODE MINING CLAIM

NOTICE IS HEREBY GIVEN that the BB-30

lode mining claim has been located

by GOLD BASIN MINING EXP LLC whose current mailing address is 10923 VALEROSA STREET LAS VEGAS, NEVADA 89141

BLM Date Stamp



RECEIVED BLM AT PHOENIX OFFICE

The general course of this claim is EAST - WEST and it is situated in MOHAVE

County, Arizona. This claim is 1500 feet in length and 600 feet in width. This claim runs

from the location monument on which this location notice is posted approximately 40 feet in a

EAST direction to the EAST end line and 1460 feet in a WEST direction to the

WEST end line. This claim is marked by six monuments, one at each corner and one at the center of each end line of the claim.

The location monument on which this notice is posted is situated within Section 20, Township 29

N, Range 17 W, Gila Salt River Base and Meridian, Arizona and this claim encompasses portions

of the following quarter section (s), section (s), Township (s) and Range (s) SE 1/4, SW 1/4

SEC 20, NE 1/4, NW 1/4 SEC 29, T29N, R17W

Gila Salt River Base and Meridian, Arizona.

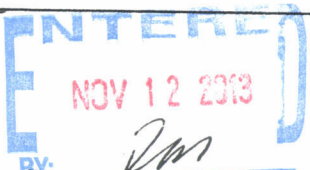
The locality of this claim with reference to some natural object or permanent monument and additional information

(if any) concerning its locality are as follows: EAST OF HUALAPAI

WASH

DATED AND POSTED on the ground this 29 day of SEPTEMBER 13

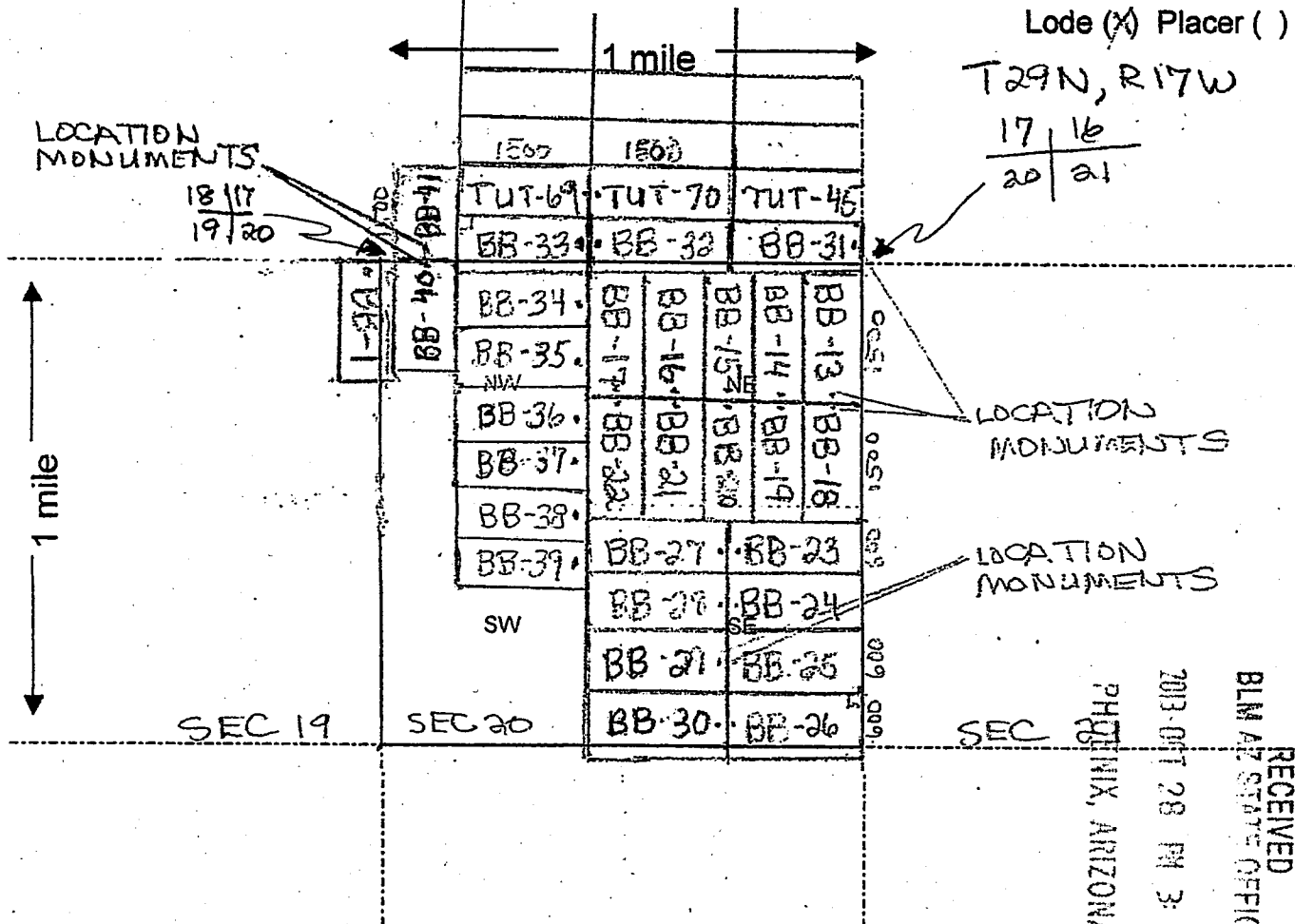
LOCATOR (s) Tom Arkosh



Form MCF100 Revised July 2005

ARIZONA 25268

MINING CLAIM MAP



Lode (X) Placer ()
 T29N, R17W
 17 | 16
 20 | 21

RECEIVED
 BLM ARIZONA STATE OFFICE
 PHOENIX, ARIZONA
 2013-OCT-28 PM 3:40

AMC 1-25268

Scale: 1" = 2000 feet

1. The above map depicts the BB-30 mining claim, which is located in Section (s) 20, Township 29 N, Range 17 W, Gila and Salt River Base and Meridian, MOHAVE County, Arizona.
2. The type of corner and location monuments used are as follows: 2" x 2" WOODEN POSTS 4 FEET HIGH
3. The bearings and distances in degrees and feet between claim corners are as depicted on the map.

Form MCF100a
 Revised July 2005

FEE# 2013050616

OFFICIAL RECORDS
OF MOHAVE COUNTY
CAROL MEIER,
COUNTY RECORDER



09/30/2013 09:47 AM Fee: \$10.00

PAGE: 1 of 2

LOCATION NOTICE FOR LODE MINING CLAIM

NOTICE IS HEREBY GIVEN that the BB-31

_____ lode mining claim has been located

by GOLD BASIN MINING EXPLOR whose current mailing

address is 10923 VALEROSA STREET

LAS VEGAS, NEVADA 89141

RECEIVED
BLM
Date
Stamp
FEDERAL ARIZONA
21 SEP 2013 9:41

The general course of this claim is EAST-WEST and it is situated in MOHAVE

County, Arizona. This claim is 1500 feet in length and 600 feet in width. This claim runs

from the location monument on which this location notice is posted approximately 40 feet in a

EAST direction to the EAST end line and 1460 feet in a WEST direction to the

WEST end line. This claim is marked by six monuments, one at each corner and one at the center of each end line of the claim.

The location monument on which this notice is posted is situated within Section 17, Township 29

N, Range 17 W, Gila Salt River Base and Meridian, Arizona and this claim encompasses portions

of the following quarter section (s), section (s), Township (s) and Range (s) SE 1/4 SEC 17,

NE 1/4 SEC 20, T29N, R17W

Gila Salt River Base and Meridian, Arizona.

The locality of this claim with reference to some natural object or permanent monument and additional information

(if any) concerning its locality are as follows: EAST OF HUALAPAI

WASH

DATED AND POSTED on the ground this 28 day of SEPTEMBER 2013

LOCATOR (s) Tom Arhosh

ENTERED
NOV 12 2013
BY: Jm

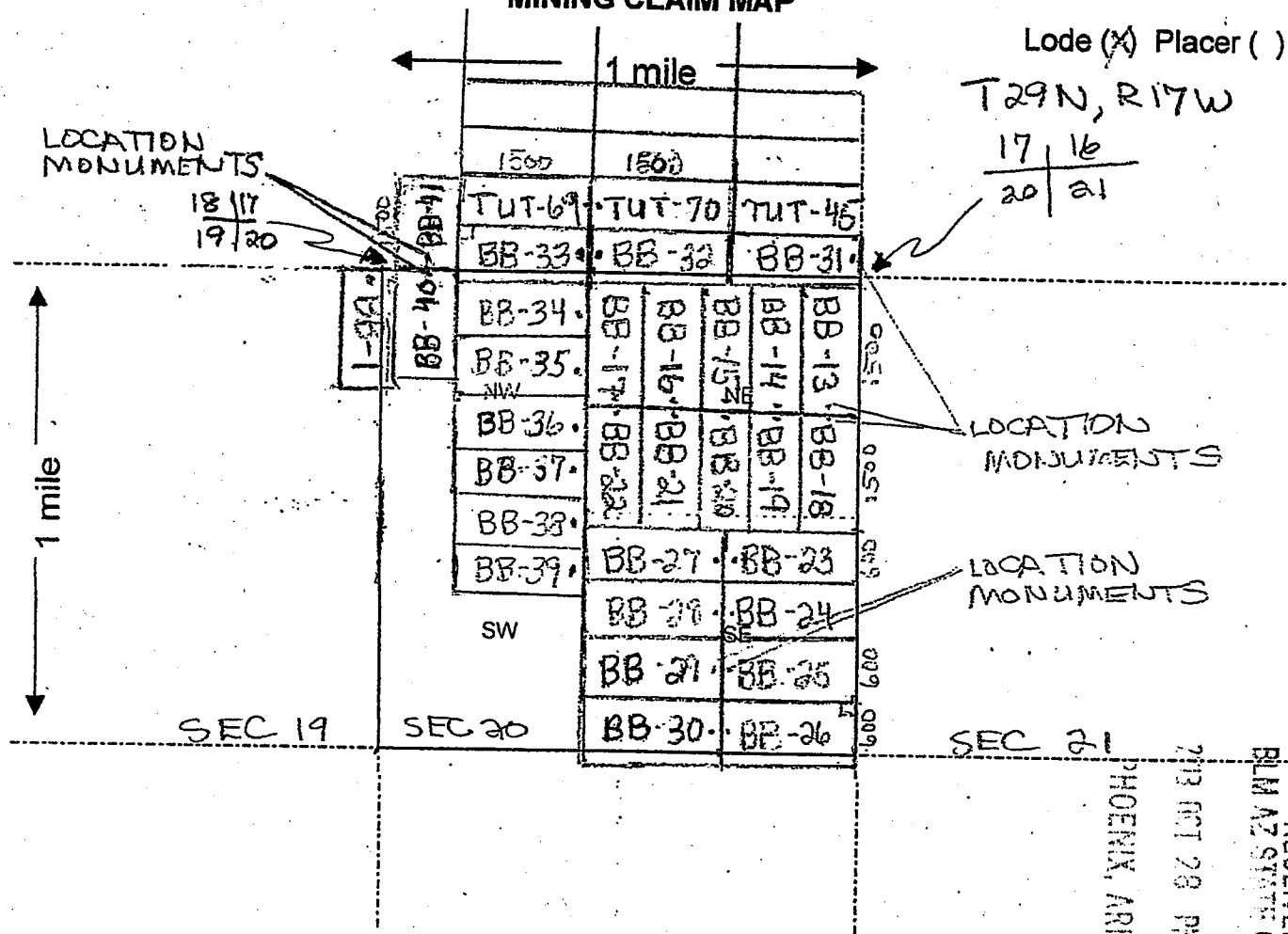
Form MCF100
Revised July 2005

MINING CLAIM MAP

Lode (X) Placer ()

T29N, R17W

17 | 16
20 | 21



Scale: 1" = 2000 feet



1. The above map depicts the BB-31 mining claim, which is located in Section (s) 17, Township 29 N, Range 17 W, Gila and Salt River Base and Meridian, MOHAVE County, Arizona.

2. The type of corner and location monuments used are as follows: 2" x 2" WOODEN POSTS 4 FEET HIGH

3. The bearings and distances in degrees and feet between claim corners are as depicted on the map.

RECEIVED
 BLM AZ STATE OFFICE
 2013 OCT 28 PM 3:44
 ANCN 25269

Form MCF100a
Revised July 2005

FEE# 2013053617

OFFICIAL RECORDS OF MOHAVE COUNTY CAROL MEIER, COUNTY RECORDER



10/16/2013 09:14 AM Fee: \$10.00

PAGE: 1 of 2

LOCATION NOTICE FOR LODE MINING CLAIM

NOTICE IS HEREBY GIVEN that the BB-32

_____ lode mining claim has been located

by GOLD BASIN MINING EXP LLC whose current mailing address is 10923 VALEROSA STREET LAS VEGAS, NEVADA 89141

BLM Date Stamp

2013 OCT 29 PM 3:41 PHOENIX, ARIZONA

RECEIVED BLM AZ COUNTY OFFICE

RETURN TO: (MC)

The general course of this claim is EAST-WEST and it is situated in MOHAVE

County, Arizona. This claim is 1500 feet in length and 600 feet in width. This claim runs from the location monument on which this location notice is posted approximately 40 feet in a WEST direction to the WEST end line and 1460 feet in a EAST direction to the EAST end line. This claim is marked by six monuments, one at each corner and one at the center of each end line of the claim.

The location monument on which this notice is posted is situated within Section 17, Township 29 N, Range 17 W, Gila Salt River Base and Meridian, Arizona and this claim encompasses portions of the following quarter section (s), section (s), Township (s) and Range (s) SE 1/4, SW 1/4 SEC 17, NE 1/4, NW 1/4 SEC 20, T29N, R 17W

Gila Salt River Base and Meridian, Arizona.

The locality of this claim with reference to some natural object or permanent monument and additional information (if any) concerning its locality are as follows: EAST OF HUALAPAI WASH

DATED AND POSTED on the ground this 30th day of SEPTEMBER 2013.

LOCATOR (s) Forn Arboosh

ENTERED NOV 12 2013 BY: JM

Form MCF100 Revised July 2005

ARCH 25270

FEE# 2013053618

OFFICIAL RECORDS
OF MOHAVE COUNTY
CAROL MEIER,
COUNTY RECORDER



10/16/2013 09:14 AM Fee: \$10.00

PAGE: 1 of 2

LOCATION NOTICE FOR LODE MINING CLAIM

NOTICE IS HEREBY GIVEN that the BB-33

_____ lode mining claim has been located

by GOLD BASIN MINING EXPLOR whose current mailing
address is 10923 VALEROSA STREET
LAS VEGAS, NEVADA 89141

BLM
Date
Stamp

PHOENIX, ARIZONA
2013 OCT 28 PM 3:11

RECEIVED
BLM ARIZONA

RETURN TO: (MC)

The general course of this claim is EAST-WEST and it is situated in MOHAVE

County, Arizona. This claim is 1500 feet in length and 600 feet in width. This claim runs

from the location monument on which this location notice is posted approximately 40 feet in a

EAST direction to the EAST end line and 1460 feet in a WEST direction to the

WEST end line. This claim is marked by six monuments, one at each corner and one at the center of each end line of the claim.

The location monument on which this notice is posted is situated within Section 17, Township 29

N, Range 17 W, Gila Salt River Base and Meridian, Arizona and this claim encompasses portions

of the following quarter section (s), section (s), Township (s) and Range (s) SW 1/4 SEC 17,

NW 1/4 SEC 20, T29N, R 17 W

Gila Salt River Base and Meridian, Arizona.

The locality of this claim with reference to some natural object or permanent monument and additional information

(if any) concerning its locality are as follows: EAST OF HUALAPAI

WASH

DATED AND POSTED on the ground this 30th day of SEPTEMBER 2013

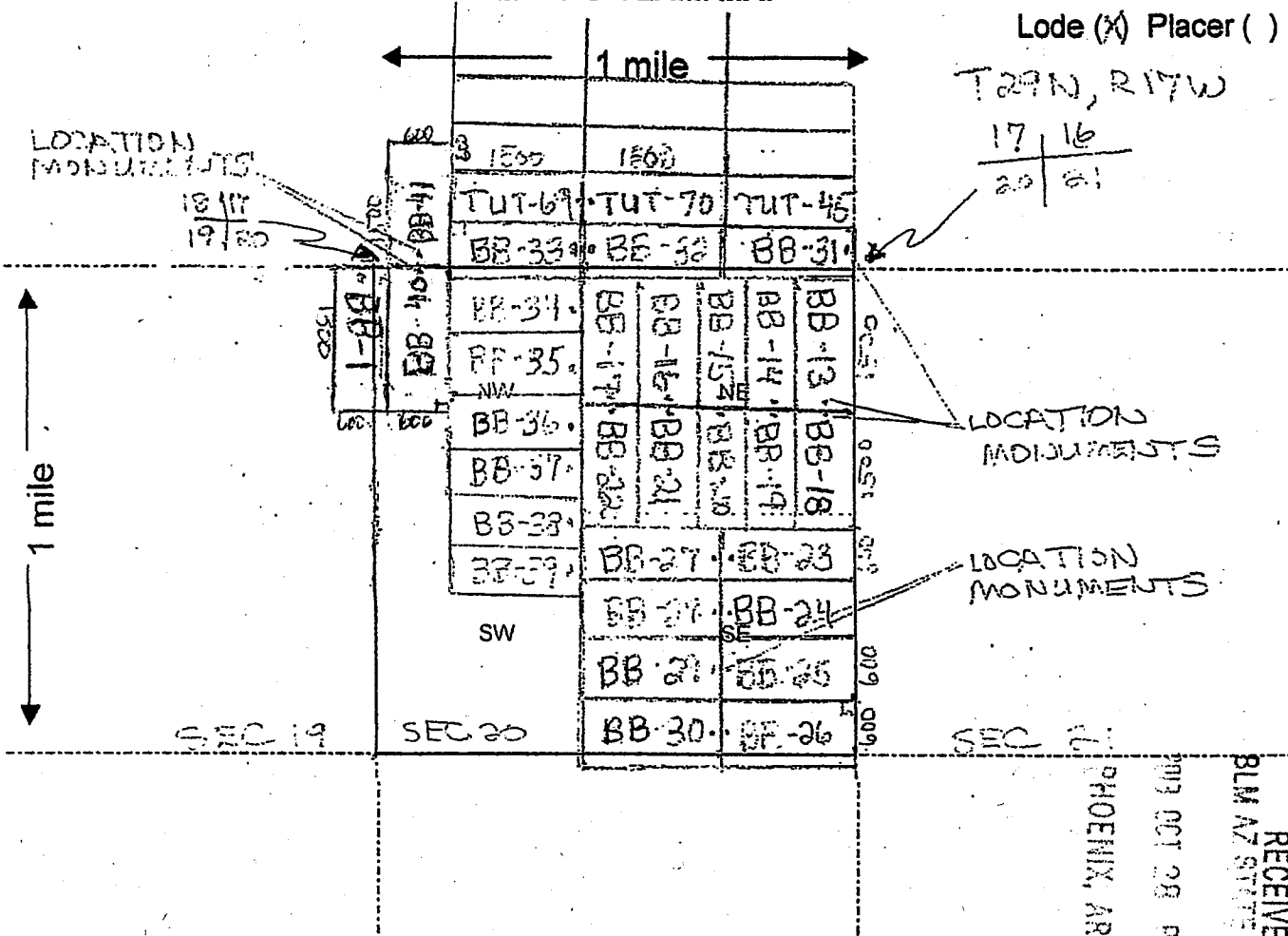
LOCATOR (s) Tom Ashoosh

ENTERED
NOV 12 2013
km

Form MCF100
Revised July 2005

1101425271

MINING CLAIM MAP



Scale : 1" = 2000 feet

1. The above map depicts the BB-33 mining claim, which is located in Section(s) 17, Township 29 N, Range 17 W, Gila and Salt River Base and Meridian, MOHAVE County, Arizona.
2. The type of corner and location monuments used are as follows: 2" x 2" WOODEN POSTS 4 FEET HIGH
3. The bearings and distances in degrees and feet between claim corners are as depicted on the map.

Form MCF100a
Revised July 2005

FEE# 2013053619

OFFICIAL RECORDS OF MOHAVE COUNTY CAROL MEIER, COUNTY RECORDER



10/16/2013 09:14 AM Fee: \$10.00

PAGE: 1 of 2

RECEIVED
BLM AZ RECORDER
2013 OCT 16 09 34 AM
PHOENIX, ARIZONA

RETURN TO: (MC)

LOCATION NOTICE FOR LODE MINING CLAIM

NOTICE IS HEREBY GIVEN that the BB-40

_____ lode mining claim has been located

by GOLD BASIN MINING EXP LLC whose current mailing address is 10923 VALLEROSA STREET LAS VEGAS, NEVADA 89141

BLM Date Stamp

The general course of this claim is NORTH-SOUTH and it is situated in MOHAVE

County, Arizona. This claim is 1500 feet in length and 600 feet in width. This claim runs

from the location monument on which this location notice is posted approximately 40 feet in a

NORTH direction to the NORTH end line and 1460 feet in a SOUTH direction to the

SOUTH end line. This claim is marked by six monuments, one at each corner and one at the center of each end line of the claim.

The location monument on which this notice is posted is situated within Section 20, Township 29

N, Range 17 W, Gila Salt River Base and Meridian, Arizona and this claim encompasses portions of the following quarter section (s), section (s), Township (s) and Range (s) NW 1/4 SEC 20, T29N, R17 W

Gila Salt River Base and Meridian, Arizona.

The locality of this claim with reference to some natural object or permanent monument and additional information (if any) concerning its locality are as follows: EAST OF HUALAPAI WASH

DATED AND POSTED on the ground this 30th day of SEPTEMBER, 2013.

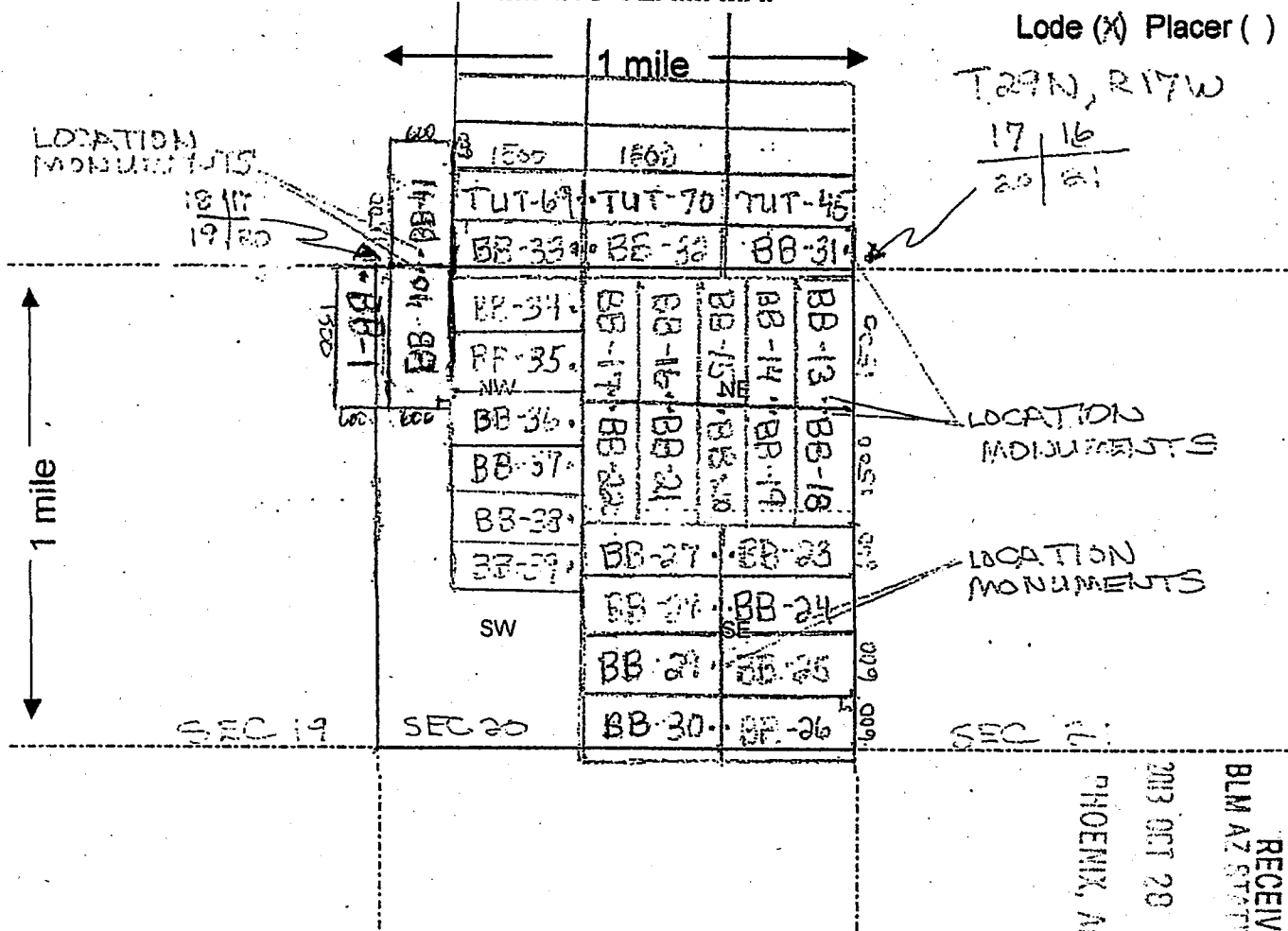
LOCATOR (s) Tom Arhosh

ENTERED
NOV 12 2013
BY: CM

Form MCF100 Revised July 2005

AR00125272

MINING CLAIM MAP



Lode (X) Placer ()

T29N, R17W
17 | 16
20 | 21

LOCATION MONUMENTS
18 | 17
19 | 20

LOCATION MONUMENTS

LOCATION MONUMENTS

Scale: 1" = 2000 feet



RECEIVED
BLM AZ STATE OFFICE

2013 OCT 28 PM 3:
PHOENIX, ARIZONA

1. The above map depicts the BB-40 mining claim, which is located in Section (s) 20, Township 29 N, Range 17 W, Gila and Salt River Base and Meridian, MOHAVE County, Arizona.
2. The type of corner and location monuments used are as follows: 2" x 2" WOODEN POSTS 4 FEET HIGH
3. The bearings and distances in degrees and feet between claim corners are as depicted on the map.

AM0425272

Form MCF100a
Revised July 2005

FEE# 2013053620

OFFICIAL RECORDS OF MOHAVE COUNTY CAROL MEIER, COUNTY RECORDER



10/16/2013 09:14 AM Fee: \$10.00

PAGE: 1 of 2

LOCATION NOTICE FOR LODE MINING CLAIM

NOTICE IS HEREBY GIVEN that the BB-41

_____ lode mining claim has been located

by GOLD BASIN MINING EXP LLC whose current mailing

address is 10923 VALLEROSA STREET

LAS VEGAS, NEVADA 89141

BLM
Date
Stamp

PHOENIX, ARIZONA

RECEIVED
PLM 10/16/2013

RETURN TO: (MC)

The general course of this claim is NORTH-SOUTH and it is situated in MOHAVE

County, Arizona. This claim is 1500 feet in length and 600 feet in width. This claim runs

from the location monument on which this location notice is posted approximately 40 feet in a

SOUTH direction to the SOUTH end line and 1460 feet in a NORTH direction to the

NORTH end line. This claim is marked by six monuments, one at each corner and one at the center of each end line of the claim.

The location monument on which this notice is posted is situated within Section 17, Township 29

N, Range 17 W, Gila Salt River Base and Meridian, Arizona and this claim encompasses portions

of the following quarter section (s), section (s), Township (s) and Range (s) SW 1/4 SEC 17,

T29N, R17W

Gila Salt River Base and Meridian, Arizona.

The locality of this claim with reference to some natural object or permanent monument and additional information

(if any) concerning its locality are as follows: EAST OF HUALAPAI

WASH

DATED AND POSTED on the ground this 30th day of SEPTEMBER, 2013.

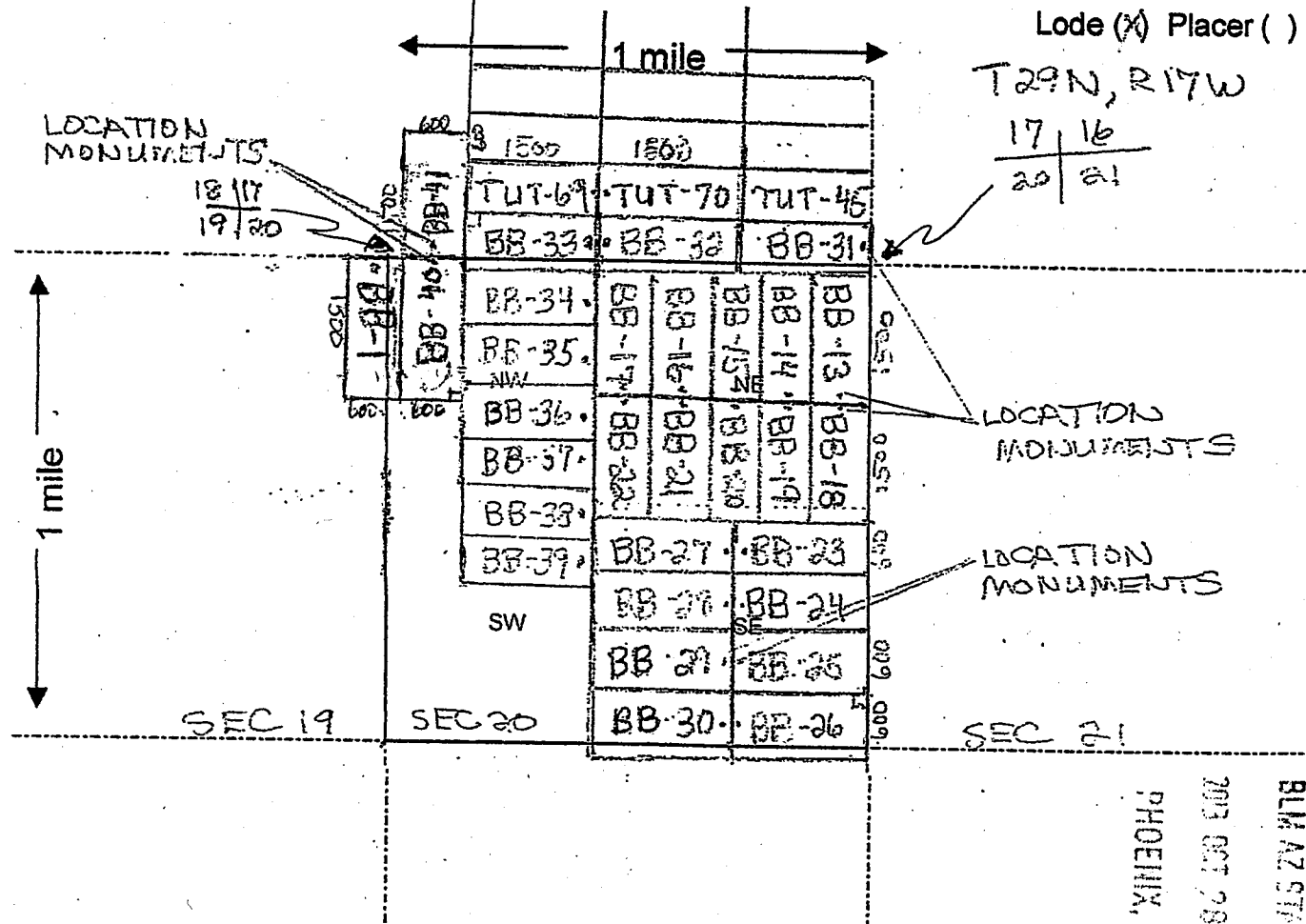
LOCATOR (s) Tom Arboosh

ENTERED
NOV 12 2013
BY: pm

Form MCF100
Revised July 2005

AM0825213

MINING CLAIM MAP



- The above map depicts the BB-41 mining claim, which is located in Section (s) 17, Township 29 N, Range 17 W, Gila and Salt River Base and Meridian, MOHAVE County, Arizona.
- The type of corner and location monuments used are as follows: 2" x 2" WOODEN POSTS 4 FEET HIGH
- The bearings and distances in degrees and feet between claim corners are as depicted on the map.

Form MCF100a
Revised July 2005

This form is available from the Arizona Department of Mines & Mineral Resources and may be reproduced.

RECEIVED
BLM AZ STATE OFFICE

ANCM 25273

FEE# 2013053621

OFFICIAL RECORDS
OF MOHAVE COUNTY
CAROL MEIER,
COUNTY RECORDER



10/16/2013 09:14 AM Fee: \$10.00

PAGE: 1 of 2

LOCATION NOTICE FOR LODE MINING CLAIM

NOTICE IS HEREBY GIVEN that the BB-42

_____ lode mining claim has been located

by GOLD BASIN MINING EXP LLC whose current mailing

address is 10923 VALLEROSA STREET
LAS VEGAS, NEVADA 89141

BLM
Date
Stamp

NOV 12 2013 PM 2:11
PHOENIX, ARIZONA

RECEIVED
BLM ARIZONA

RETURN TO: (MC)

The general course of this claim is NORTH-SOUTH and it is situated in MOHAVE

County, Arizona. This claim is 1500 feet in length and 600 feet in width. This claim runs

from the location monument on which this location notice is posted approximately 40 feet in a

SOUTH direction to the SOUTH end line and 1460 feet in a NORTH direction to the

NORTH end line. This claim is marked by six monuments, one at each corner and one at the center of each end line of the claim.

The location monument on which this notice is posted is situated within Section 29, Township 29

N, Range 17 W, Gila Salt River Base and Meridian, Arizona and this claim encompasses portions

of the following quarter section (s), section (s), Township (s) and Range (s) NE 1/4

SEC 29, T29N, R17W

Gila Salt River Base and Meridian, Arizona.

The locality of this claim with reference to some natural object or permanent monument and additional information

(if any) concerning its locality are as follows: EAST OF HUALAPAI

WASH

DATED AND POSTED on the ground this 15th day of OCTOBER, 2013.

LOCATOR (s) Tom Arboosh

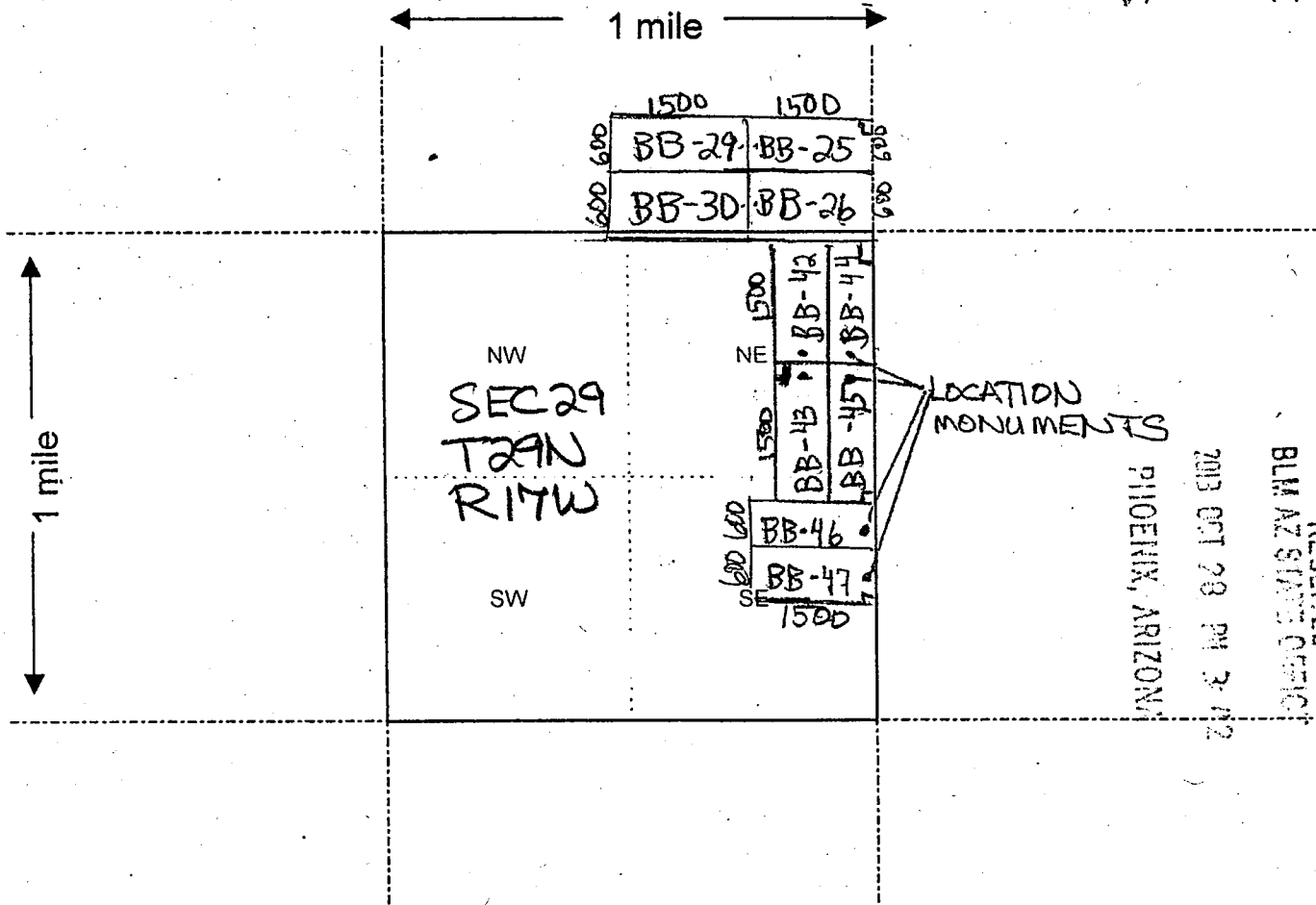
ENTERED
NOV 12 2013
BY: _____

Form MCF100
Revised July 2005

NOV 12 2013

MINING CLAIM MAP

Lode (X) Placer ()



RECEIVED
BLM AZ STATE OFFICE

2013 OCT 29 PM 3:12

PHOENIX, ARIZONA

AN104255274

Scale: 1" = 2000 feet



1. The above map depicts the BB-42 mining claim, which is located in Section (s) 29, Township 29 N, Range 17 W, Gila and Salt River Base and Meridian, MOHAVE County, Arizona.
2. The type of corner and location monuments used are as follows: 2" x 2" WOODEN POSTS 4 FEET HIGH
3. The bearings and distances in degrees and feet between claim corners are as depicted on the map.

Form MCF100a
Revised July 2005

FEE# 2013053622

OFFICIAL RECORDS OF MOHAVE COUNTY CAROL MEIER, COUNTY RECORDER



10/16/2013 09:14 AM Fee: \$10.00

PAGE: 1 of 2

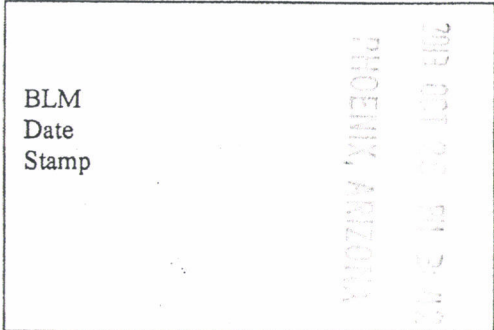
LOCATION NOTICE FOR LODE MINING CLAIM

NOTICE IS HEREBY GIVEN that the BB-43

_____ lode mining claim has been located

by GOLD BASIN MINING EXP LLC whose current mailing address is 10923 VALLEROSA STREET LAS VEGAS, NEVADA 89141

BLM Date Stamp



RECEIVED BLM AZ STATE OFFICE

RETURN TO: (MC)

The general course of this claim is NORTH-SOUTH and it is situated in MOHAVE

County, Arizona. This claim is 1500 feet in length and 600 feet in width. This claim runs

from the location monument on which this location notice is posted approximately 40 feet in a

NORTH direction to the NORTH end line and 1460 feet in a SOUTH direction to the

SOUTH end line. This claim is marked by six monuments, one at each corner and one at the center of each end line of the claim.

The location monument on which this notice is posted is situated within Section 29, Township 29

N, Range 17 W, Gila Salt River Base and Meridian, Arizona and this claim encompasses portions

of the following quarter section (s), section (s), Township (s) and Range (s) NE 1/4, SE 1/4

SEC 29, T29N, R17W

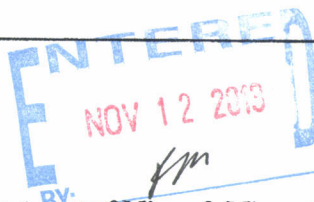
Gila Salt River Base and Meridian, Arizona.

The locality of this claim with reference to some natural object or permanent monument and additional information

(if any) concerning its locality are as follows: EAST OF HUALAPAI WASH

DATED AND POSTED on the ground this 15th day of OCTOBER, 2013.

LOCATOR (s) Tom Arboosh

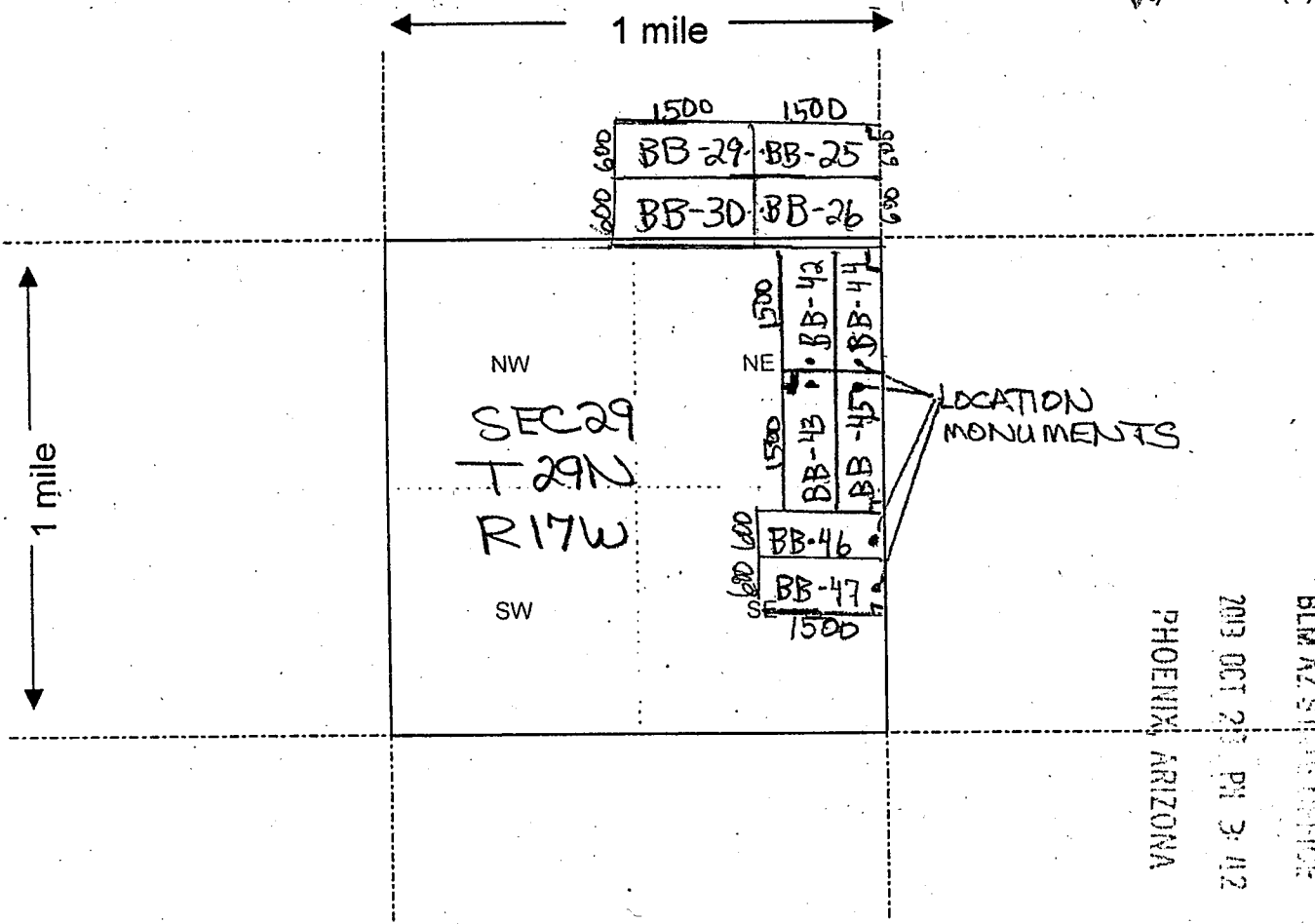


Form MCF100 Revised July 2005

ARIZONA 25275

MINING CLAIM MAP

Lode (X) Placer ()



RECEIVED
BLM AZ SURVEY OFFICE
PHOENIX, ARIZONA
2013 OCT 23 PM 3:42

ANCH 25275

Scale : 1" = 2000 feet

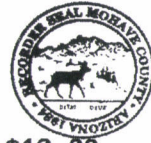


1. The above map depicts the BB-43 mining claim, which is located in Section (s) 29, Township 29 N, Range 17 W, Gila and Salt River Base and Meridian, MOHAVE County, Arizona.
2. The type of corner and location monuments used are as follows: 2" x 2" WOODEN POSTS 4 FEET HIGH
3. The bearings and distances in degrees and feet between claim corners are as depicted on the map.

Form MCF100a
Revised July 2005

FEE# 2013053623

OFFICIAL RECORDS OF MOHAVE COUNTY CAROL MEIER, COUNTY RECORDER



10/16/2013 09:14 AM Fee: \$10.00

PAGE: 1 of 2

RETURN TO: (MC)

LOCATION NOTICE FOR LODE MINING CLAIM

NOTICE IS HEREBY GIVEN that the BB-44

lode mining claim has been located by GOLD BASIN MINING EXP LLC whose current mailing address is 10923 VALLEPOSA STREET LAS VEGAS, NEVADA 89141

BLM Date Stamp PHOENIX, ARIZONA

RECEIVED BLM AT REC'D OFFICE

The general course of this claim is NORTH-SOUTH and it is situated in MOHAVE County, Arizona. This claim is 1500 feet in length and 600 feet in width. This claim runs from the location monument on which this location notice is posted approximately 40 feet in a SOUTH direction to the SOUTH end line and 1460 feet in a NORTH direction to the NORTH end line. This claim is marked by six monuments, one at each corner and one at the center of each end line of the claim.

The location monument on which this notice is posted is situated within Section 29, Township 29 N, Range 17 W, Gila Salt River Base and Meridian, Arizona and this claim encompasses portions of the following quarter section (s), section (s), Township (s) and Range (s) NE 1/4 SEC 29, T29N, R17W

Gila Salt River Base and Meridian, Arizona.

The locality of this claim with reference to some natural object or permanent monument and additional information (if any) concerning its locality are as follows: EAST OF HUALAPAI WASH

DATED AND POSTED on the ground this 15TH day of OCTOBER, 2013.

LOCATOR (s) Tom Arboosh

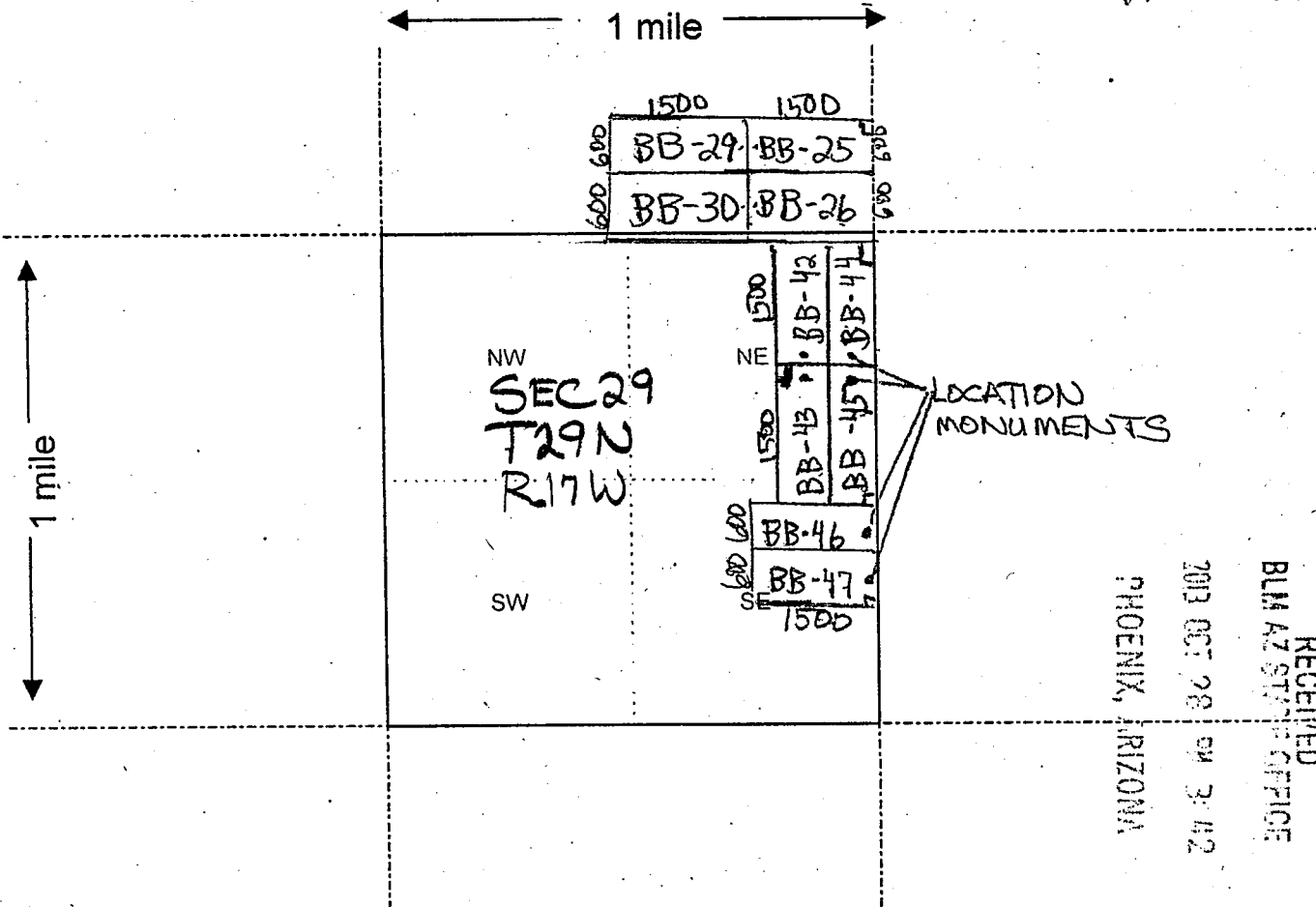
INTEREST NOV 12 2013 BY: [Signature]

Form MCF100 Revised July 2005

AR0625276

MINING CLAIM MAP

Lode (X) Placer ()



Scale : 1" = 2000 feet



1. The above map depicts the BB-44 mining claim, which is located in Section (s) 29, Township 29 N, Range 17 W, Gila and Salt River Base and Meridian, MOHAVE County, Arizona.
2. The type of corner and location monuments used are as follows: 2" x 2" WOODEN POSTS 4 FEET HIGH
3. The bearings and distances in degrees and feet between claim corners are as depicted on the map.

Form MCF100a
Revised July 2005

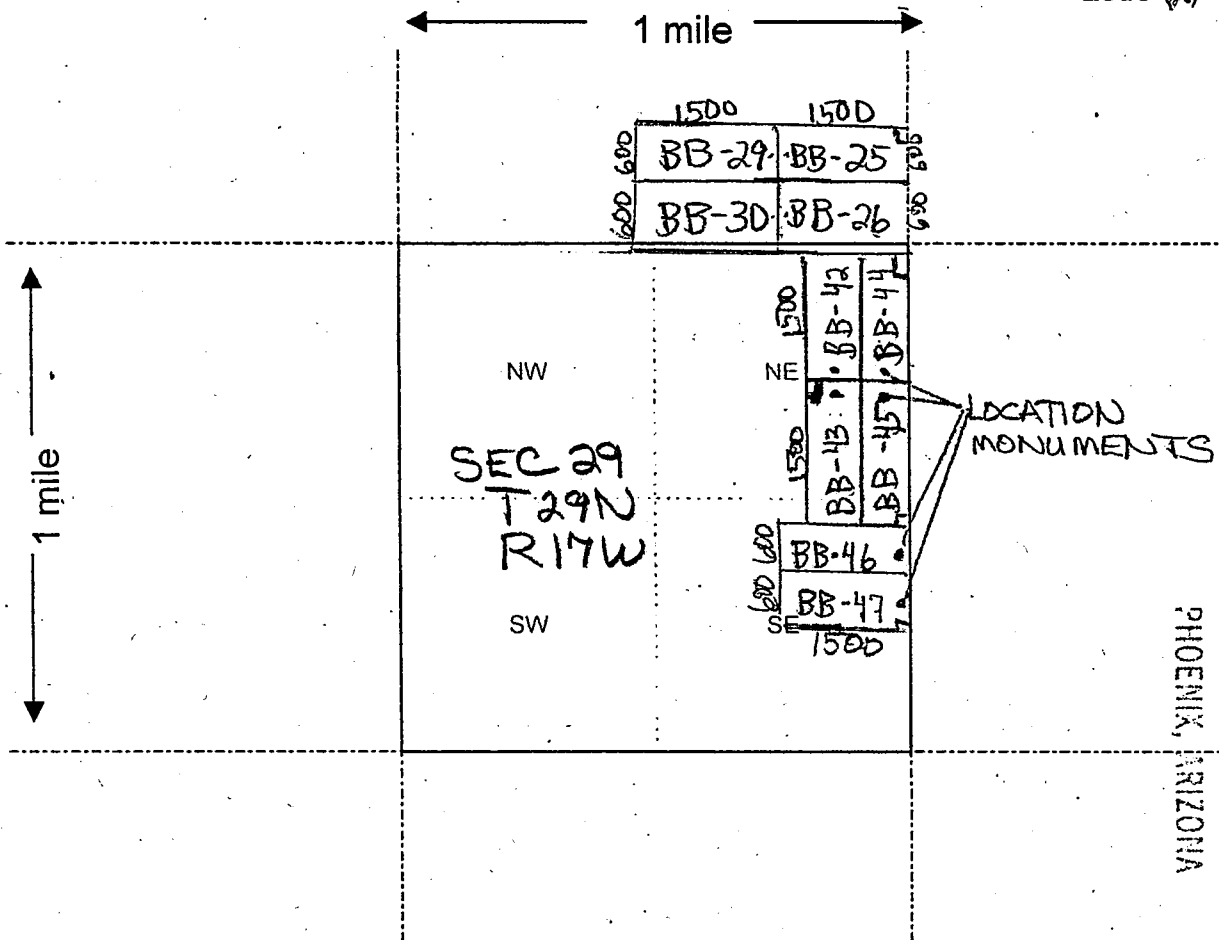
This form is available from the Arizona Department of Mines & Mineral Resources and may be reproduced.

RECEIVED
BLM AZ STATE OFFICE
PHOENIX, ARIZONA
2012 OCT 28 AM 3:42

AMC 425276

MINING CLAIM MAP

Lode (X) Placer ()



RECEIVED
BLM AZ STATE OFFICE

2013 OCT 28 PM 3:42

PHOENIX, ARIZONA

ANCI 25277

Scale: 1" = 2000 feet

- The above map depicts the BB-45 mining claim, which is located in Section (s) 29, Township 29 N, Range 17 W, Gila and Salt River Base and Meridian, MOHAVE County, Arizona.
- The type of corner and location monuments used are as follows: 2" x 2" WOODEN POSTS 4 FEET HIGH
- The bearings and distances in degrees and feet between claim corners are as depicted on the map.

Form MCF100a
Revised July 2005

FEE# 2013053625

OFFICIAL RECORDS OF MOHAVE COUNTY CAROL MEIER, COUNTY RECORDER



10/16/2013 09:14 AM Fee: \$10.00

PAGE: 1 of 2

RECEIVED BLM AZ STATE OFFICE

2013 OCT 22 PM 3:43 P. JENKINS, ARIZONA

RETURN TO: (MC)

LOCATION NOTICE FOR LODE MINING CLAIM

NOTICE IS HEREBY GIVEN that the BB-46

lode mining claim has been located by GOLD BASIN MINING EXP LLC whose current mailing address is 10923 VALLEROSA STREET LAS VEGAS, NEVADA 89141

BLM Date Stamp

The general course of this claim is EAST-WEST and it is situated in MOHAVE

County, Arizona. This claim is 1500 feet in length and 600 feet in width. This claim runs from the location monument on which this location notice is posted approximately 40 feet in a EAST direction to the EAST end line and 1460 feet in a WEST direction to the WEST end line. This claim is marked by six monuments, one at each corner and one at the center of each end line of the claim.

The location monument on which this notice is posted is situated within Section 29, Township 29 N, Range 17 W, Gila Salt River Base and Meridian, Arizona and this claim encompasses portions of the following quarter section (s), section (s), Township (s) and Range (s) SE 1/4 SEC 29, T29N, R17W

Gila Salt River Base and Meridian, Arizona.

The locality of this claim with reference to some natural object or permanent monument and additional information (if any) concerning its locality are as follows: EAST OF HUALAPAI WASH

DATED AND POSTED on the ground this 15th day of OCTOBER, 2013.

LOCATOR (s) Tom Arkosh

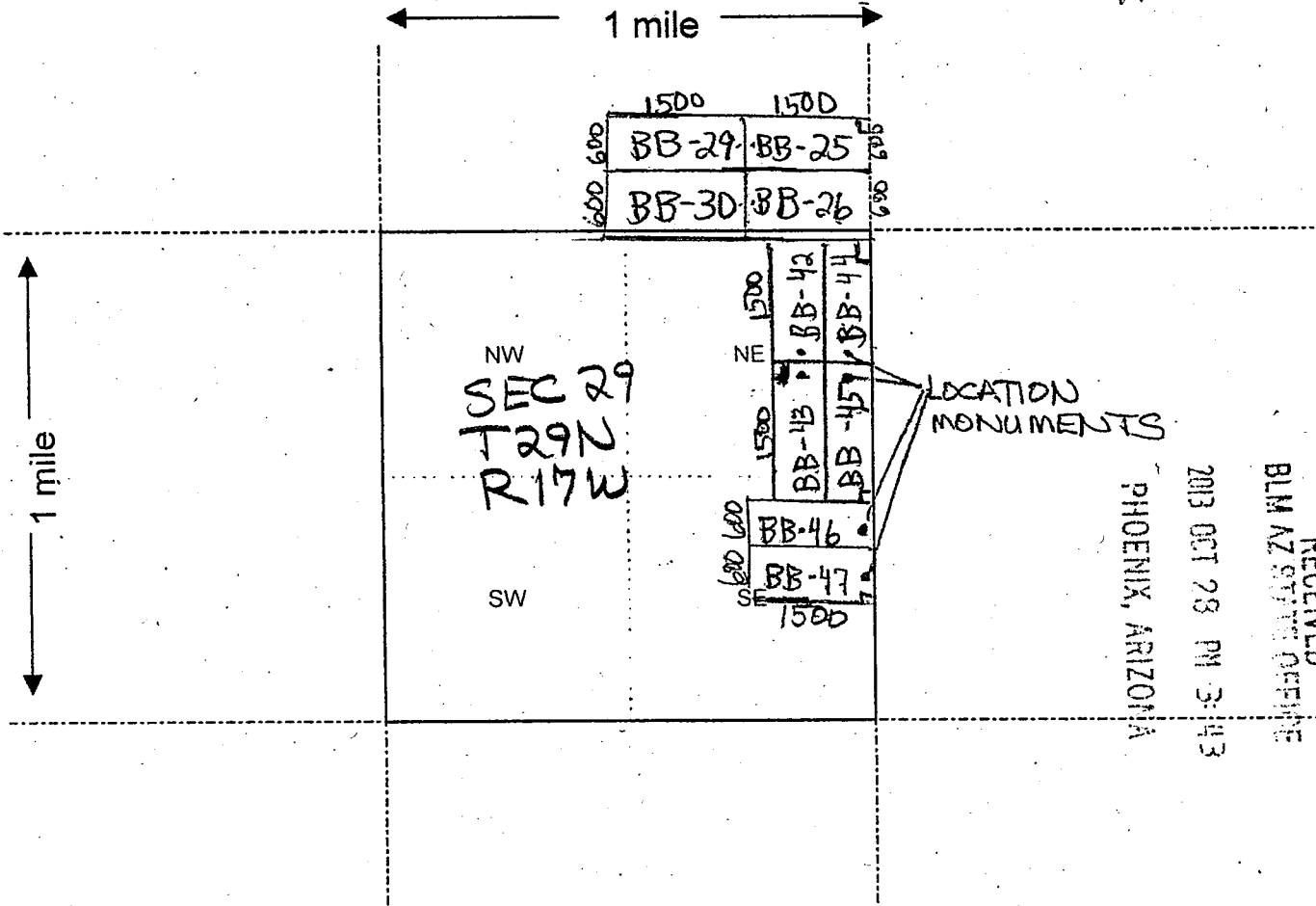
ENTERED NOV 12 2013 BY: [Signature]

Form MCF100 Revised July 2005

AR0825278

MINING CLAIM MAP

Lode (X) Placer ()



- The above map depicts the BB-46 mining claim, which is located in Section (s) 29, Township 29 N, Range 17 W, Gila and Salt River Base and Meridian, MOHAVE County, Arizona.
- The type of corner and location monuments used are as follows: 2" x 2" WOODEN POSTS 4 FEET HIGH
- The bearings and distances in degrees and feet between claim corners are as depicted on the map.

Form MCF100a
Revised July 2005

This form is available from the Arizona Department of Mines & Mineral Resources and may be reproduced.

AMC 425278

FEE# 2013053626

OFFICIAL RECORDS
OF MOHAVE COUNTY
CAROL MEIER,
COUNTY RECORDER



10/16/2013 09:14 AM Fee: \$10.00

PAGE: 1 of 2

RETURN TO: (MC)

LOCATION NOTICE FOR LODE MINING CLAIM

NOTICE IS HEREBY GIVEN that the BB-47

_____ lode mining claim has been located

by GOLD BASIN MINING EXP LLC whose current mailing

address is 10923 VALLEROSA STREET

LAS VEGAS, NEVADA 89141

BLM
Date
Stamp
PHOENIX, ARIZONA
OCT 20 PM 3:42

RECEIVED
BLM AZ

The general course of this claim is EAST-WEST and it is situated in MOHAVE

County, Arizona. This claim is 1500 feet in length and 600 feet in width. This claim runs

from the location monument on which this location notice is posted approximately 40 feet in a

EAST direction to the EAST end line and 1460 feet in a WEST direction to the

WEST end line. This claim is marked by six monuments, one at each corner and one at the center of each

end line of the claim.

The location monument on which this notice is posted is situated within Section 29, Township 29

N, Range 17 W, Gila Salt River Base and Meridian, Arizona and this claim encompasses portions

of the following quarter section (s), section (s), Township (s) and Range (s) SE 1/4 SEC 29,

T29N, R17W

Gila Salt River Base and Meridian, Arizona.

The locality of this claim with reference to some natural object or permanent monument and additional information

(if any) concerning its locality are as follows: EAST OF HUALAPAI

WASH

DATED AND POSTED on the ground this 15th day of OCTOBER, 2013.

LOCATOR (s) Tom Arboosh

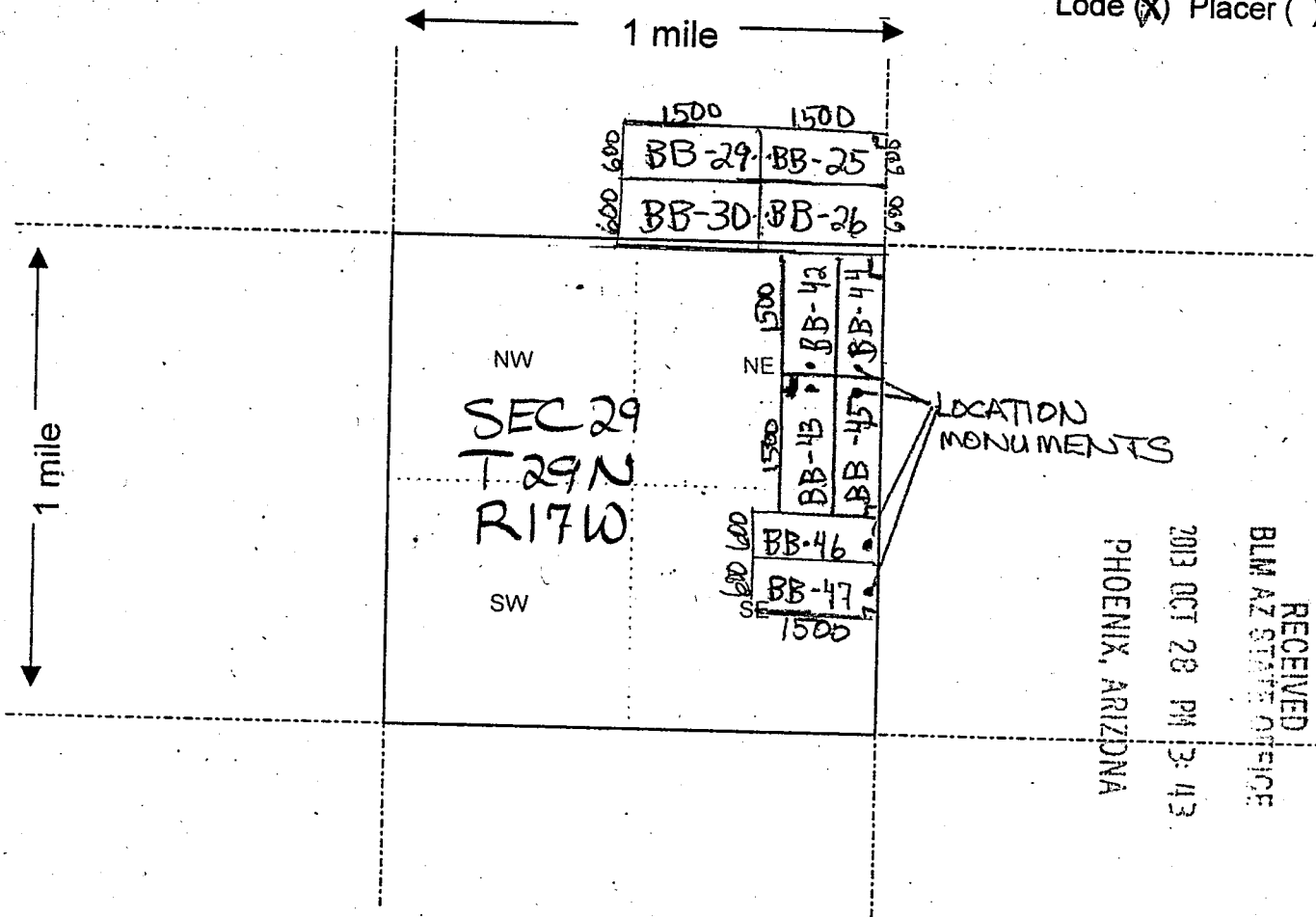
ENTERED
NOV 12 2013

Form MCF100
Revised July 2005

2013053626

MINING CLAIM MAP

Lode (X) Placer ()



LOCATION MONUMENTS

RECEIVED
BLM AZ STATE OFFICE
PHOENIX, ARIZONA
2013 OCT 28 PM 3:43

ANCH 25219

Scale : 1" = 2000 feet



1. The above map depicts the BB-47 mining claim, which is located in Section (s) 29, Township 29 N, Range 17 W, Gila and Salt River Base and Meridian, MOHAVE County, Arizona.
2. The type of corner and location monuments used are as follows: 2" x 2" WOODEN POSTS 4 FEET HIGH
3. The bearings and distances in degrees and feet between claim corners are as depicted on the map.

Form MCF100a
Revised July 2005

Input Parameters for Geographic Report with Land

System Id = CR

Admin State = AZ

Geo State =

Casetype Begins With

Case Disp Txt = AUTHORIZED, CANCELLED, EXPIRED, PENDING, REJECTED, RELINQUISHED, VOID, WITHDRAWN

Mer Twp Rng = 14 0290N 0170W

Section = 017, 020, 029, 999

Mtrs =

Commodity =

Commodity Txt =

Pending Org =

Pend Org Decode =

Total Rows Returned: 1

RUN TIME: 08:46 AM

UNITED STATES DEPARTMENT OF INTERIOR
BUREAU OF LAND MANAGEMENT
GEOGRAPHIC REPORT WITH LAND
Sorted by Serial Number

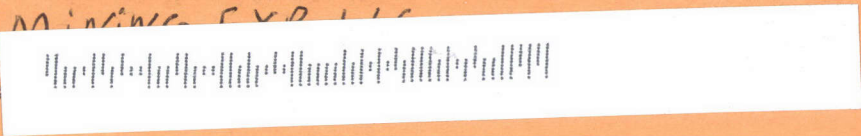
RUN DATE: 11/07/2013
Page 1 of 1

Adm State: AZ

Serial Number: AZA 027150
Total Case Acres: 1.000

<u>Casetype</u>	<u>Case Disp</u>				<u>Sect</u>	<u>Sur Typ</u>	<u>Sur Num</u>	<u>Suff</u>	<u>Subdivision</u>	<u>Act Pend</u>
380913	EXPIRED	14	0290N	0170W	020	ALIQ			N2;	

GOLD BASIN MINING EXP LLC
10923 VALLEY
LAS VEGAS, NV 89141



RECEIVED
BLM AZ STATE OFFICE
2013 OCT 28 PM 3:34
PHOENIX, ARIZONA



Bureau of Land Management
ONE NORTH CENTRAL AVENUE
SUITE 800
PHOENIX, AZ 85004-4427